




# THEODORE ALEXANDER

The **Alexa Hampton** Collection

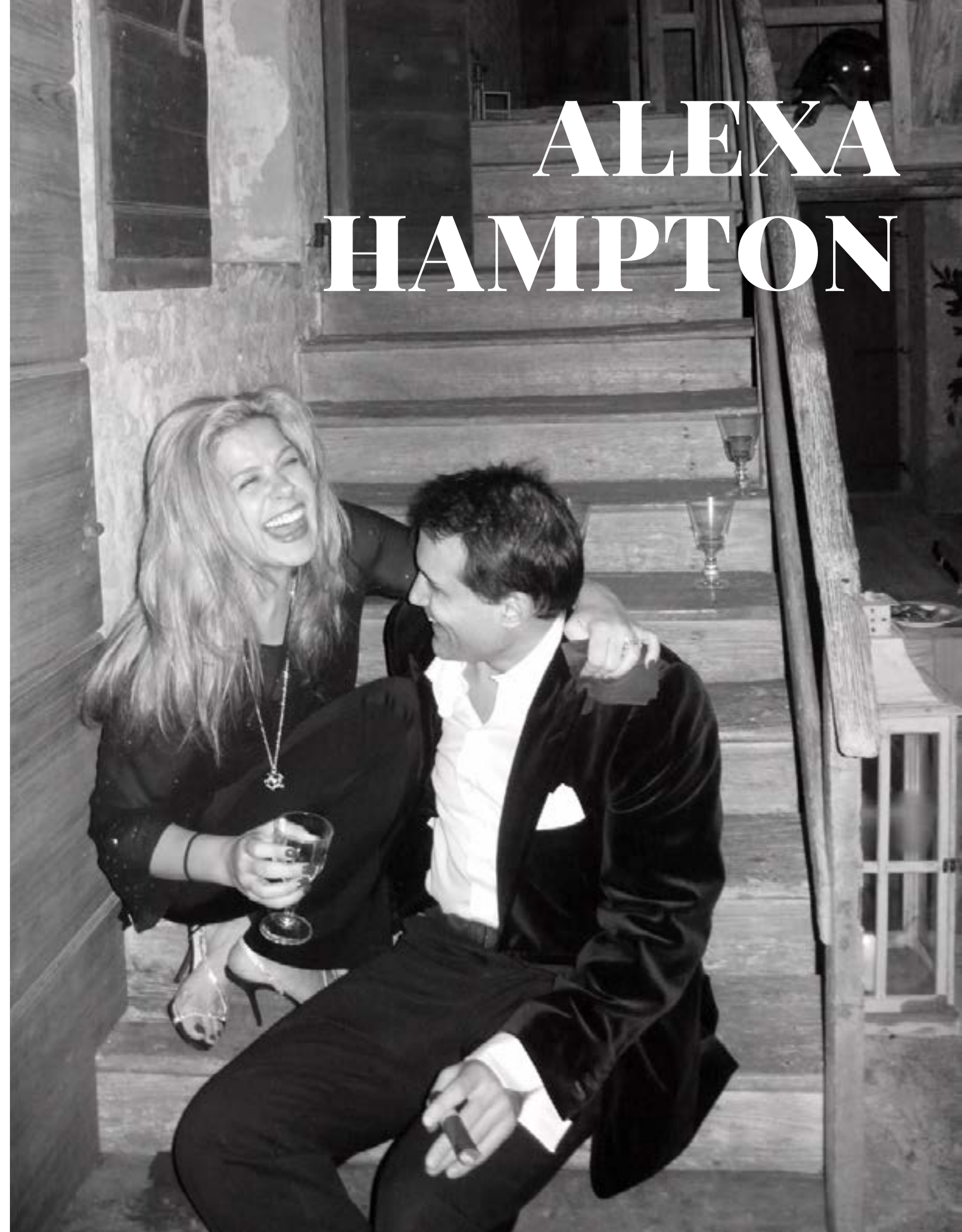


© 2021 Alexa Hampton Inc.  
© 2021 Theodore Alexander 2021  
Photographs © Alexa Hampton Inc.  
THEODORE ALEXANDER® is a trademark of Theodore Alexander International, Inc.  
ALEXA HAMPTON® is a trademark of Alexa Hampton, Inc.

-----  
All rights reserved



From New York City to Hangzhou, China, Alexa Hampton's project portfolio encompasses luxe, beautifully layered urban apartments, expansive town and country residences, private airplanes, and yachts. Regularly named to Architectural Digest's AD100 and House Beautiful's Top Designer list as well as Elle Décor's A-List, Hampton translates the classical principles of good design and decoration into some of today's most elegant, enduring, and functional domestic landscapes.





## CONTENTS

LIVING ROOM	8
DINING ROOM	116
BEDROOM	154
OFFICE	188

---

# LIVING ROOM

---





**WINGATE CLUB CHAIR**

U3059-40

A lavish chair with all over tufting, the Wingate Chair, is a classic silhouette with a masculine feel. Plush tight tufted seat and back, soft scrolled arms, and turned wood feet impart a handsome elegance for any room.

Shown in 1237-65 Fabric; Cambridge Finish

40 x 39 x 33 in | 102 x 99 x 84 cm



**WINGATE SOFA**

U1059-96

A lavish sofa with all over tufting, the Wingate Sofa, is a classic silhouette with a masculine feel. Plush tight tufted seat and back, soft scrolled arms, and turned wood feet impart a handsome elegance for any room.

Shown in 6041-32 Fabric; Cambridge Finish

96 x 39 x 33 in | 244 x 99 x 84 cm





**VIRGINIA SOFA**

U1061-87

Reminiscent of an English sofa model, the Virginia boasts comfort at every turn. Cushioned inner arms, loose seat cushions and upholstered back create a hybrid of tailoring and comfort. Set on tapered legs.

Shown in 1241-94 Fabric; Cambridge Finish

87 x 38 x 33 in | 221 x 97 x 84 cm

**VIRGINIA LOVE SEAT**

U2061-65

65 x 38 x 33 in | 165 x 97 x 84 cm





**NEILL SOFA**

U1060-96

An updated take on a classic Maison Jansen silhouette. A tight upholstered back with loose seats gives this sofa the perfect combination of sophistication and approachability. A slim tapered leg and flared arm amend the historical model.

Shown in 4024-92 Fabric; Cambridge Finish

96 x 36½ x 33½ in | 244 x 93 x 85 cm

\*VN code: AXH45008



**NEILL CLUB CHAIR**

U3060-31

An updated take on a classic Maison Jansen silhouette. A tight upholstered back with loose seats gives this chair the perfect combination of sophistication and approachability. A slim tapered leg and flared arm amend the historical model.

Shown in 4024-92 Fabric; Cambridge Finish

31 x 34½ x 33½ in | 79 x 88 x 85 cm

\*VN code: AXH42007



**GUY ACCENT CHAIR**

U3066-28

A gorgeous adaptation of Biedermeier arm chair, Guy has sensuous sloping wood arms and lines trimmed in mahogany. A loose cushion provides a soft seat to this lounge chair.

Shown in 1241-94 Fabric; Cambridge Finish

27½ x 30 x 32½ in | 70 x 76 x 83 cm

\*VN code: AXH42010



**ULLA ACCENT CHAIR**

U3068-28

Reminiscent of a 1930's style chair, Ulla has a soft curved back, rounded arms and base framed in wood. A skirt conceals a swivel mechanism making Ulla both beautiful and practical.

Shown in 1241-94 Fabric

28 x 30 x 32 in | 71 x 76 x 81 cm

\*VN code: AXH42012







**SULLIVAN TABLE**

AXH50031.C105

An octagonal top with inset tooled leather brings richness to the Sullivan's classic silhouette. Subtle carved gilded moldings frame the apron and drawer. A shapely base with brass inlay rests below pilaster legs.

Shown in Cambridge Finish

27 x 27 x 29 in | 69 x 69 x 74 cm



**MICHELLE CHAISE**

U4062-30

The Michelle Chaise Longue features a tufted seat and back finished with an scrolled upholstered back. These soft details are counterpoint to a handsome show wood base and shapely turned legs on brass castors.

Shown in 1237-44 Fabric; Cambridge Finish

30 x 65 x 38½ in | 76 x 165 x 98 cm

\*VN code: AXH47002





**MELINDA COCKTAIL TABLE**

AXH51017.C105

Based on an Empire Italian antique, Melinda features inset ebonized floral decorations, gray marble top and lower wood shelf with brass galleries, carved griffin head legs and paw feet.

Shown in Cambridge Finish

50 x 30 x 18 in | 127 x 76 x 46 cm



**LINDA COCKTAIL TABLE**

AXH51016.C110

Designed for a longtime client, the Linda has a scroll design top with saber legs and brass cappings. A lower shelf accommodates objets and coffee table books.

Shown in Salted finish.

54 x 30 x 18 in | 137 x 76 x 46 cm





**GARTH CONSOLE TABLE**

AXH53009.C111

A sophisticated Neoclassical design with Biedermeier flavor, Garth has strict pilaster legs with brass trimmings. A veneered top and apron with pull drawer sit atop a tall open space meant to accommodate accessories on a veneered lower base.

Shown in Vienna Finish

60 x 19 x 33 in | 152 x 48 x 84 cm



**PEARCE CONSOLE TABLE**

AXH53010.C107

A dual pedestal console with Baltic flair, the Pearce has clean lines and hidden storage.

Shown in Kings Finish

60 x 20 x 32 in | 152 x 51 x 81 cm





**KERRY CONSOLE TABLE**

AXH53008.C107

Evocative of Jacobean craftsmanship, Kerry boasts a shaped apron with three pull drawers, carved columnar legs and lower shelf.

Shown in Kings Finish

58 x 22 x 33 in | 147 x 56 x 84 cm





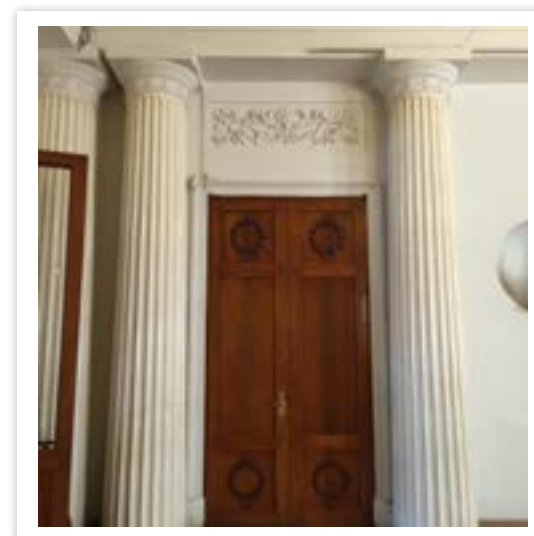
**MARK BOOKCASE TABLE**

AXH50033.C110

A tempietto bookcase table built for Alexa's own apartment, this gem features all of the classic elements: fluted Doric columns, a frieze with triglyphs and metopes, with guttae and recessed side panels.

Shown in Salted White Finish

34¼ x 19 x 34¼ in | 87 x 48 x 87 cm



**FRANCESCA SPOT TABLE**

AXH50029.C105

The Francesca is sure to turn heads with her turned wood base and eglomise painted glass top.

Shown in Cambridge finish.

21½ x 21½ x 28 in | 55 x 55 x 71 cm





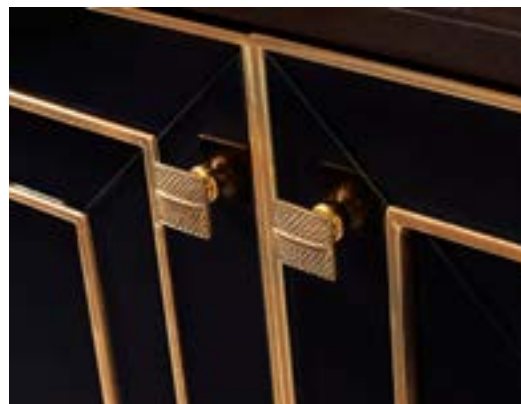
**MANNIX BAR CABINET**

AXH61008.C159

A sexy cabinet reminiscent of the roaring 1920's, the Mannix is decked out with eglomise glass and gilt painted lines. With a laugh at prohibition, this cabinet interior is outfitted for liquor and glass storage.

Shown in Cambridge Finish with Gold Details

45 x 20 x 34 in | 114 x 51 x 86 cm



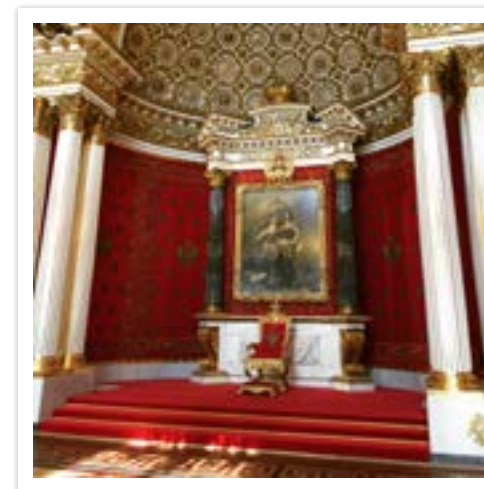
**PEARSON STORAGE CABINET**

AXH17001.C105

Pearson, a beautiful fluted pedestal that has the added advantage of secret storage: the perfect column.

Shown in Cambridge Finish

18 x 18 x 67 in | 46 x 46 x 170 cm





**CHRISTIAN JEWELLED MIRROR**

AXH31017

Jewelry inspired, this faceted mirror plays with illusion and reflection using eglomise and antiqued mirror all in the service of high impact.

30¼ x 2 x 39¼ in | 77 x 5 x 100 cm







**MINOO SQUARE MIRROR**

AXH31014.C159

A superhero mirror featuring black eglomise and carved mouldings, Minoo breaks the mold for an atypical silhouette.

Shown in Cambridge Finish with Gold Details

40 x 2 x 40 in | 102 x 5 x 102 cm





**LIZA ROUND MIRROR**

AXH31015.C112

Inspired by its Irish-Regency cousins, the paired down Liza, has both refinement and modern geometry.

Shown in Karat Finish

45 x 1 $\frac{3}{4}$  x 45 in | 114 x 4 x 114 cm







“People are wanting living rooms that give the notion that your time in that space is an occasion.”

Alexa Hampton

We achieve that feeling by filling the rooms with pieces that feel special and significant and say that your time spent in that space is extraordinary.



**ERGISI SOFA**

U1004-94

A sumptuous sofa with exotic Ottoman empire influences ticks all the luxury boxes. Canted knoll arms flank a bench cushion and back with four throw pillows. Perfectly tailored with a welt trim crest, underscoring the sofa’s beautiful lines. In place of a skirt, a long tassel fringe circles the sofa base.

94 x 40 x 36 in | 239 x 102 x 91 cm





“The most common design dilemma is not trusting yourself to know what you like.”

Alexa Hampton

We all have preferences and we need to acknowledge them and the fact that if we allow ourselves to be talked way out of our happy place, we will, understandably, be unhappy.



**OAKLEY COCKTAIL TABLE**

AXH51006.C105

With turned and tapering bobbin legs and peg feet, Oakley evokes a British West Indies colonial vibe. The rectangular reeded-edge coffee tabletop offers ample surface space, matched with a lower tier for storage and display. Ribbon Mahogany veneered top.

Shown in Cambridge finish

52 x 32 x 19 in | 132 x 81 x 48 cm



**INGRID SIDE TABLE**

AXH50019

Ingrid Side Table Side table or sculpture? Alexa Hampton's Ingrid is that rare design, a work of art and beautiful accent table. The base is a network of faux bamboo cast in brass with brass strappings. The table top is veneered with glass overlay. An églomisé gilt tray top completes the design. Organic and sophisticated.

26 x 26 x 28 in | 66 x 66 x 71 cm





**SALZ CHAIR**

U3013-29

The Salz accent chair strikes a pose. The tight back is gently arched in iconic camelback style, with sloped scrolled arms. Salz is detailed with wood trim and stands on square tapered legs capped in brass.

Shown in Seal finish

29 x 27½ x 32 in | 74 x 70 x 81 cm

“I love the Living Room because, at its best, it is where everything converges.”

—  
Alexa Hampton

Family and friends, intimate times and group celebrations, formal furniture and art, and comfortable upholstery all contained within an envelope that should possess some of the most ambitious architectural elements of a house (or apartment).





**ALBERT SOFA**

U1001-84

A classic form in modern upholstery, the Albert sofa can go anywhere and be anything, with your creative fabric selection. The plush bench cushion is held in place with locking apostrophe arms. Three loose boxed cushions form the back, with two throw pillows flanking the high tuxedo-arms. Set on raised block feet.

Shown in Cambridge finish

84 x 37½ x 35 in | 213 x 95 x 89 cm

\* 33" H (84cm) to top of back pillow

"My favorite projects have not been so because of their location, but rather the clients themselves. It's truly exciting to collaborate with a client to help them create their home. Between the architectural conception, the moving day, and the tweaks thereafter, the process can be a long one. Rome wasn't built in a day. Because of this, I often get to spend a great amount of time with my clients and have developed some wonderful relationships throughout my career."

Alexa Hampton





**ALAN COCKTAIL TABLE**

AXH51001.C107

Clubby and stylishly masculine, Alan cuts a dashing cocktail table profile. The molded-edge rectangular top is beautifully crafted in ribbon Mahogany veneer parquetry, and stands on bold column legs joined by a network of X stretchers. Set on turned disc feet.

Shown in Kings finish

52 x 30 x 18 in | 132 x 76 x 46 cm



**PHILIPPE WALL MIRROR**

AXH31008.C112

Philippe is a modern reimagining of a classic Regency-style wall mirror. The central antique mirror is set in a chevron-leaf carved frame, mitered with an interior frame. A glorious serpentine crest tops the wall mirror.

Shown in Karat finish

30 x 1¾ x 55¼ in | 76 x 4 x 140 cm





**DAUPHIN SOFA**

U1010-86

The Dauphin sofa is a riff on Maison Jansen style, with Louis XVI leitmotifs. With a tight upholstered back framed in nailheads, modestly scrolled arms securing a triple-cushion loose seat, nailhead trim along the sofa base, and spiral turned tapering legs, the Dauphin is elegant and timeless.

Shown in Salted white finish

86 x 35 x 33½ in | 218 x 89 x 85 cm

“I love doing Living Rooms because they tend to be the most ambitious rooms as well as the repository of the best art.”

Alexa Hampton





**AMALIA COCKTAIL TABLE**

AXH51005.C157

An earlier prototype of this unusual cocktail table, inspired by Greco-Roman grave stelae, can be found in Alexa Hampton's own apartment. The waterfall tabletop is trimmed in Brass, descending to end supports with pierced and gilt Moorish windows. Stepped plinth bases. Textured ribbon Mahogany.

Shown in Seal and Painted Gold finish

41¼ x 23½ x 18 in | 106 x 60 x 46 cm



**CATRINE SIDE TABLE**

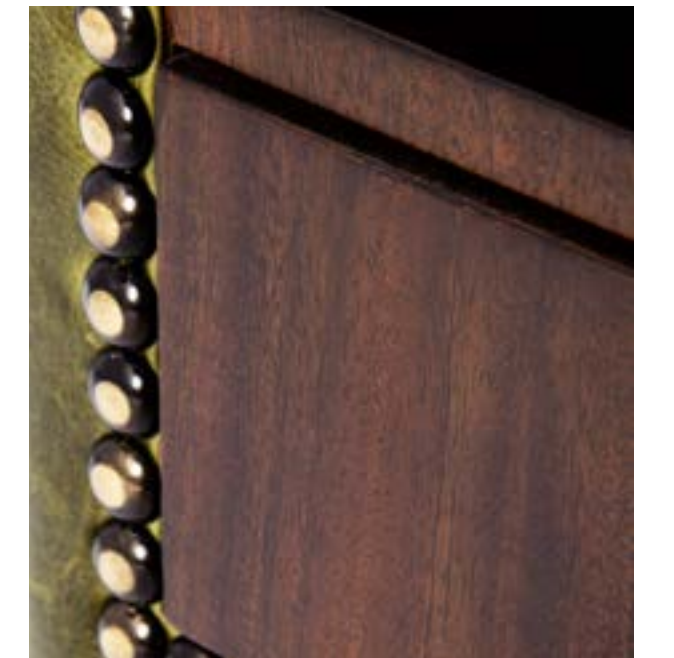
AXH50006.C105

Coveting a bohemian rhapsody? Whimsical, lyre-shaped Catrine can elevate your room – as a bedside or living room table. Molded-edge tabletop, open interior, frieze drawer, lower drawers and tapered legs are Mahogany and veneered. Shown in Cambridge Finish. Can be ordered with upholstered exterior. Available in multiple finishes.

26 x 19¼ x 27¾ in | 66 x 50 x 70 cm



Shown in Cambridge finish with 9020-25 leather and Old Brass nails





**SOFIA SIDE TABLE**

AXH50016.C159

An updated riff on a neoclassical pedestal table, the Sofia side table boasts a crossbanded top with inverted hand-gilt scalloped edge. The pedestal is equally amazing: a turned and tassel-carved column decorated with gilt and set on a trefoil concave base with raised peg feet.

Shown in Cambridge and Painted Gold finish

28 x 28 x 28 in | 71 x 71 x 71 cm



**PENELOPE ACCENT TABLE**

AXH50017.C109

The modestly scaled Penelope accent table has strong architectural lines. This faceted end table is an ideal decorative gesture in most any design plan. Hexagon top and paneled base are inlaid with Caramel finish leather, trimmed in nailheads and set on a plinth base.

Shown in Seal finish

15 x 13 x 18 in | 38 x 33 x 46 cm



**THOMAS CHAIR**

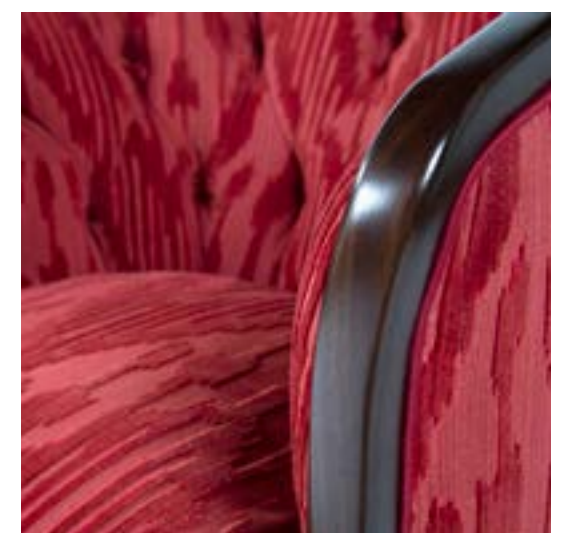
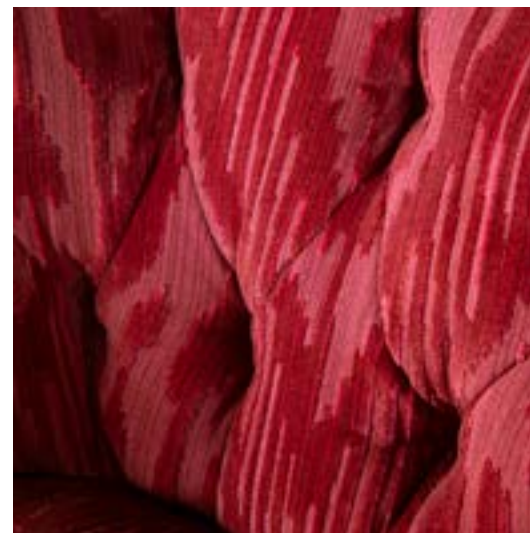
U3016-28

Thomas is a striking buttoned-up tub chair with a design legacy reaching back to Art Deco drawing rooms. The high back, arms, uprights and base are trimmed in Mahogany. The tufted chair interior, paired with loose-cushion seat, is enveloping.

Shown in Cambridge finish

28 x 31 x 28 in | 71 x 79 x 71 cm

\*VN code: AXH42002





**ANTONIO GAMES TABLE**

AXH52003.C105

While Antonio's DNA is all 1930's Italian, this sleek modern game table translates perfectly in today's homes. The gilt-tooled leather top is ready for play, with pivoting hinged drawers on the frieze. All supported on bold square legs and set on tapered brass cappings.

Shown in Cambridge finish

39½ x 39½ x 29½ in | 100 x 100 x 75 cm



**ADDISON ACCENT TABLE**

AXH50020.C105

A small-scale design powerhouse, this accent table can anchor larger pieces or go solo in the center of a room. Beautifully scalloped with a single frieze drawer, serpentine tray top and lower shelf, the end table is set on square tapering legs.

Shown in Cambridge finish

14 x 14 x 23 in | 36 x 36 x 58 cm

“The role of the decorator today is to balance the desire for beauty, chic and glamour with the more prosaic needs of domesticity in the same room.”

Mark Hampton



Shown in Karat finish





In an age where everyone can buy the same sofa silhouette, and find all the same fabrics via the Internet, we may have reached the point where the only thing that distinguishes us, and our houses are the details. If we are all going to wear black pants (and I do nearly every day), it requires that we add a few special flourishes of our own. Today, uniqueness has become the ultimate luxury. Details define the unique by allowing you to customize a piece of furniture or curtains to make them yours alone - a one-of-a-kind piece.

“Today, uniqueness has become the ultimate luxury.”

—  
Alexa Hampton



**MARKHAM SOFA**

U1003-90

The Markham sofa is a happy hybrid of a French antique and classic Tuxedo-style divan. High track arms and back hold a bench cushion and three knife-edge loose cushion backs. Finished with two bolsters and two throw pillows. Set on spiral turned and tapering legs.

Shown in Kings finish

90 x 38 x 36 in | 229 x 97 x 91 cm



**EMILY CHAU COCKTAIL TABLE**

AXH51014.C110

Emily is a cocktail table with legs, a fresh modern updated on a classic Chinoiserie silhouette. The rectangular tabletop with beautiful wavy apron and pierced openings is set on inswept Chau legs. The modern Salted White finish is on trend and timeless.

Shown in Salted white finish

48 x 24 x 18 in | 122 x 61 x 46 cm



**TIMOTHY SIDE TABLE**

AXH50027.C105

Based on a canonical Chau-footed side table, Alexa Hampton brings the Far East home with a striking yet understated accent table. Timothy is a master class in quiet detail: molded-edge top, slightly recessed apron with reeded scallop detail and pierced openings, lower tier with drawer, and square legs with Chinese inscrolled feet. Mahogany and Mahogany veneered.

Shown in Cambridge finish

26 x 20 x 28 in | 66 x 51 x 71 cm

“This work has to do with people and beauty and the timeless activities of domestic life. At least our private worlds can reward us with peace and pleasure.”

—  
Mark Hampton







**EMILIA SIDE TABLE**

AXH50015

This two-tier side table showcases Theodore Alexander's amazing metalwork. Note the mirrored brass gallery top, stylish X-supports and reeded brass legs finished with acanthus-shaped cast feet. The lower shelf sports a beautiful blonde figured veneer with painted Greek-key border. The ultimate end table.

21 x 13¾ x 33 in | 53 x 35 x 84 cm

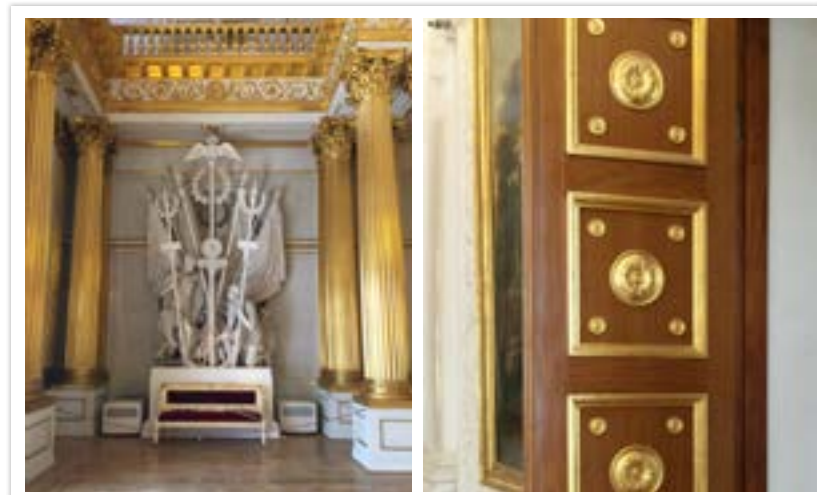


**EMILIA CONSOLE TABLE**

AXH53006

This two-tier console table showcases Theodore Alexander's amazing metalwork. Note the glass top with brass gallery, stylish X-supports and reeded brass legs finished with acanthus-leaf cast feet. The lower shelf sports a beautiful blonde figured veneer with painted Greek-key border.

45 x 18 x 32½ in | 114 x 46 x 83 cm



“Training your eye is a lifelong process. Studying and learning from the masters, and following the empirical truth that form the foundation of architecture and design, are essential.”

—  
Alexa Hampton,  
*The Language of Interior Design*



**BARON COCKTAIL TABLE**

AXH51015.C105

Alexa Hampton's clean and sleek reinvention of a classic coffee table, Baron holds court beautifully. Rectangular cocktail tabletop is bound in brass with a simple frieze. Set on octagonal legs clad in faceted cast ball feet. Beech and veneers with Seal finish.

Shown in Cambridge Finish

48 x 26 x 18 in | 122 x 66 x 46 cm



**WILLIAM BAR**

AXH61006.C165

Based on a Biedermeier original, the two-door cabinet is detailed with a single frieze drawer, column capitals, ivory-finish escutcheons and set on raised block feet. William may also be used as a bar cabinet with a spacious interior and adjustable shelf. Mahogany with Seal finish.

Shown in Seal and Faux Bone finish

33 x 19 x 35½ in | 84 x 48 x 90 cm







"I wish color  
were an area of  
design immune  
to passing fancies  
and prejudices,  
but some of our  
colors inevitably  
do slip in and out  
of fashion."

Mark Hampton



**ALBERT EXTENDED SOFA**

U1001-96

A classic form in modern upholstery, the Albert sofa can go anywhere and be anything, with your creative fabric selection. The plush bench cushion is held in place with locking apostrophe arms. Three loose boxed cushions form the back, with two throw pillows flanking the high tuxedo-arms. Set on raised block feet.

Shown in Cambridge finish

96 x 37½ x 35 in | 244 x 95 x 89 cm

\* 33"H (84cm) to top of back pillow



**CARL SOFA**

U1009-96

With equal parts Scandinavian and midcentury modern inspiration, Carl is totally today. The sofa configuration ensures comfort with three seat cushions, three back cushions and four throw pillows. A shapely Mahogany frame reveals all: down-swept arms, angular uprights and seat rail. Set on turned and tapered legs.

Shown in Cambridge finish

96 x 33½ x 32 in | 244 x 85 x 81 cm

\* 30"H (76cm) to top of back pillow



“The perfect living room in my opinion would have a fireplace with a beautiful antique mirror with a gilded frame.”

—  
Alexa Hampton

The perfect living room would have a tufted sofa upholstered in a soft velvet and a pair of bergere chairs to give the room some age and a sense of importance. I have fallen in love recently with oushak carpets because they tend to come in muted colors and give a softness to a room, while also adding a lived-in appearance. I really enjoy the light of sconces, so I would place them throughout the room- perhaps over the mantel and sofa. Lamps are also a must because their light is much more appealing and flattering than overhead lighting.

**JAIPUR WALL MIRROR**

AXH31003.C155

A great decorative mirror can add instant architecture to a room. The Jaipur Wall Mirror evokes Moorish architecture with an exotic sculpted arch surrounding the mirror plate.

Shown in Seal Finish with Karat Detailing

36 x 1½ x 54 in | 91 x 4 x 137 cm



“The ability to communicate mood is a characteristic of many colors, and red, I think, has more connotations than any other. These connotations have a great influence on personal taste in interior decoration.”

Mark Hampton





**MIGUEL COCKTAIL TABLE**

AXH51009.C105

Miguel is modern industrial chic. It's all about the base, a studded steel monolith bound by bracket supports. Square cocktail tabletop is Mahogany veneered.

Shown in Cambridge finish

48 x 48 x 18 in | 122 x 122 x 46 cm

There is no perfect path to follow with every project, but I encourage clients to start with a furniture plan. It is the essential roadmap of any project. I also like to remind all and sundry that there are always several beautiful ways that a room can be decorated and not just one "right" way.

"A furniture plan is the essential roadmap of any project."

Alexa Hampton



**LINDSAY CONSOLE TABLE**

AXH53005.C105

The Lindsay console table quietly charms with strict lines, perfect symmetries and secrets. A plain frieze apron holds a hidden drawer. The table base is a network of turned and fluted column supports and pilasters with a mirrored back panel. Set on a concave plinth base.

Shown in Cambridge finish

36 x 22 x 33 in | 91 x 56 x 84 cm



**IAN CONSOLE TABLE**

AXH53003.C105

Ian summons the bold geometries of Art Deco and a passion for architecture. Recessed frieze apron holds a rectangular molded-edge table top. The base is a three-part story: a trio of tapered columns stand tall on a stepped plinth base. And adaptable as a sofa table, too.

Shown in Cambridge Finish

55½ x 19¼ x 32 in | 141 x 49 x 81 cm







**COCO GAMES TABLE**

AXH52002.C109

Coco pays homage to Louis XVI and Jansen furniture. Revel in the gaming table detail: gilt-tooled leather top (chess or backgammon, anyone?), fluted frieze with cast brass flowerhead corner brackets and turned and fluted tapered legs with brass casters.

Shown in Seal finish

36 x 36 x 30 in | 91 x 91 x 76 cm



**CHRISTOPHER TIERED SIDE TABLE**

AXH50011.C113

What an amazing quartet. The Christophe side table is, in fact, a group of four movable trays with simulated Amara Veneered dish topped set on ebonized Chau bases. Stackable, they come together or go it alone. Perfect for highly polished rooms. Stunning in layered spaces with a bohemian edge. Designer's call!

Shown in Inky Black finish

17 x 17 x 18¼ in | 43 x 43 x 46 cm





**HAILEY DINING / CENTER TABLE**  
 AXH55002.C105  
 The perfect petit dining room table or essential entryway table- the choice is yours. The round sunburst table top is figured in Mahogany veneer with a reeded edge outlined in Hampton brass. The down-swept monolithic table pedestal is supported by a Cavetto molded base detailed with brass nailheads.  
 Shown in Cambridge finish  
 48 x 48 x 30 in | 122 x 122 x 76 cm

“We all know that interior decoration is seen by many as a frivolous career full of ruffles and flourishes and preposterous fashion statements. Yet to transform the bleak and the barren into welcoming places where one can live seems to me an important and worthwhile goal in life. Sometimes this transformation can stun the eye, sometimes simply gladden it, but these are not frivolous pursuits.”

Mark Hampton



**HINTON CENTER TABLE**  
 AXH55003.C105  
 Columnar and sculptural, the Hinton Center table is destined for center stage. Six turned legs with reeded baluster carvings rise from a six-point star plinth base set on molded feet. Completed with a round molded-edge tabletop. Mahogany solids and veneers.  
 Shown in Cambridge Finish  
 52 x 52 x 30 in | 132 x 132 x 76 cm





#### VITTORIO SOFA

U1002-103

Vittorio is a streamlined take on a classic Chesterfield sofa. Deep biscuit-tuft tailoring define arms, inside back and seat. The sofa arms and back are purposefully angular and over-rolled to dramatic effect. Set on block feet.

Shown in Cambridge finish

103 x 39 x 27 in | 262 x 99 x 69 cm

“As a decorator, I take a practical approach to sofas as their primary function is to provide a place to sit. In my own home, as a mother of three, my sofa thesis was low maintenance and comfort. I selected a tight back Bridgewater sofa as it requires minimal fluffing to appear tidy, while the saddle arm cradles my neck perfectly during naps. Seat height was also important to me, as I did not want a low bench requiring hoisting to get up, which has become more significant as I am getting older. Tufting is a detail I love in sofas.”

---

Alexa Hampton





**MILLY CHAIR**

U3026-25

The decorative arts flourished during Napoleon III's reign. Thus inspired, the Milly upholstered chair is the peak of chic today. Stylishly armless, the tight seat and back culminate with a built-in bolster back, pleated and buttoned at each side. Set on turned and tapering legs with brass cappings and castors.

Shown in Kings finish

25 x 32½ x 36 in | 64 x 83 x 91 cm



**JOSEPHINE OTTOMAN**

U8014-27

Boxed-upholstered seat ottoman set on turned and fluted tapering legs with brass cappings and casters. Indispensable throughout the home, wherever extra seating is required or desired.

Shown in Kings finish

27 x 22 x 16 in | 69 x 56 x 41 cm



“My favorite way to use black in a room is with furniture. An ebonized piece of furniture can look elegant and sophisticated in almost any room.”

\_\_\_\_\_  
Alexa Hampton

I think it provides depth and contrast. My favorite way to use black in a room is in furniture. An ebonized piece of furniture can look elegant and sophisticated in almost any room.

**SARGENT GAMES TABLE**

AXH52004.C157

Based on a French tric-trac table, Sargent is a winning writing table or gaming table. Reversible desktop panel sports a backgammon and chess/checker board with counter well. Reeded diamond corners and framed apron evoke Russian influences. Tapering legs with gilt moldings and cappings. Mahogany and Mahogany veneer with Seal finish.

Shown in Seal finish with Gold details

44 x 23 x 29 in | 112 x 58 x 74 cm



**CRISTINA COCKTAIL TABLE**

AXH51007.C109

Boldly proportioned and conceived, the Cristina cocktail table's square frame acts as an anchor. The perimeter and legs of the coffee table are set in a faux-bamboo frame. Brushed and textured veneered top.

Shown in Seal finish

48 x 48 x 18 in | 122 x 122 x 46 cm



**MAY SIDE TABLE**

AXH50021.C114

An antique Victorian bamboo side table inspires the lines of the May side table. Fashioned in faux bamboo carved Beech with gilt-tooled Caramel finish leather inlaid shelves. How wonderfully asymmetrical. The middle shelf cantilevers and seems to float. Set on splayed feet.

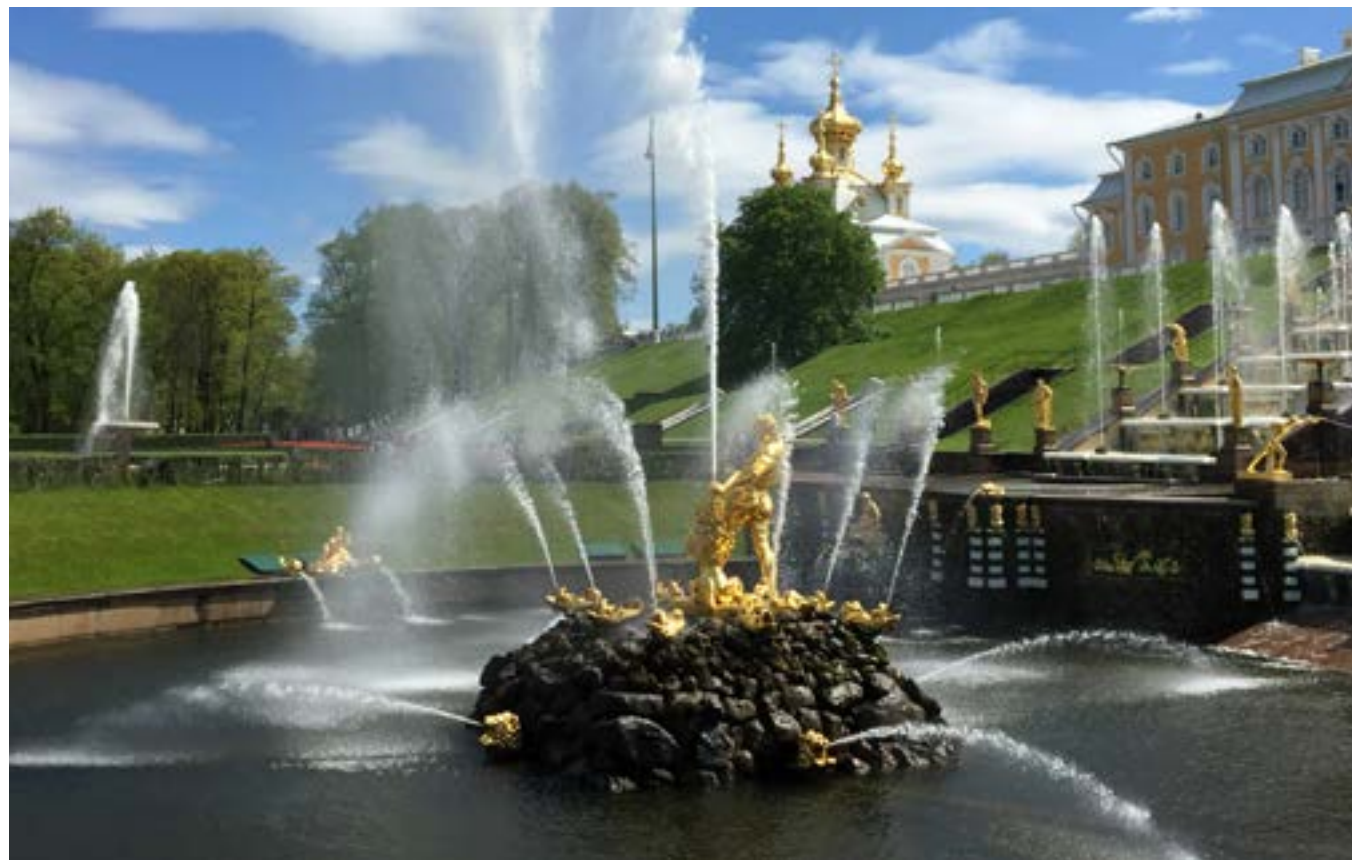
Shown in Caramel finish

30 x 24 x 26 in | 76 x 61 x 66 cm

“I believe that decorating is not simply a set of arbitrary ideas, an eclectic assortment of favorite objects, or a mere mimicking of current trends. Good design has a clear lexicon; it is grounded in logic, an aesthetic precept, and the work and well-trained eyes of artists, architects, builders, and designers.”

—  
Alexa Hampton,  
*The Language of Interior Design*





**JACQUELINE SIDE TABLE**

AXH50005.C158

The Jacqueline side table evokes historical models with familiar flourishes: interlocking rings and tapered legs capped in brass. Jacqueline ups the ante with the addition of pyramid punctuation along the frieze apron, and a functional slide. Hand-brushed frieze details flesh out this rich design. Mahogany veneered.

Shown in Cambridge and Rustic Gold finish

30½ x 19½ x 28 in | 78 x 50 x 71 cm



**LYNNE FOLD OVER GATE LEG TEA TABLE**

AXH53004.C105

With Neoclassic-inspired ease, the Lynne living room table does double duty as a demilune console table and a tea table. The versatile molded-edge tabletop folds over and gate-legs open to complete the transformation. Square tapered legs with brass capitals and cappings.

Shown in Cambridge Finish

Open: 43¼ x 43¼ x 28¾ in | 110 x 110 x 73 cm

Closed: 43¼ x 21½ x 29½ in | 110 x 55 x 75 cm



**MAX CABINET**

AXH61005.C105

An intoxicating bar cabinet! Mahogany parquet door fronts are overlaid with geometric brass diamond trim and Y handles. Set on square tapered legs with a brass X stretcher. Inside, Max fulfills his liquor cabinet mission: LED-lit with mirror back, glass hangers, galleried shelf, wine rack and two drawers.

Only available in Cambridge Finish

35 x 19 x 58 in | 89 x 48 x 147 cm





**CARMEN RECTANGULAR WALL MIRROR**

AXH31001.C112

Carmen showcases layers of interest. This beveled-edge antiqued mirror center is set in a frame of consecutive octagonal coffered mirrored plates. The optics are gorgeous in this decorative mirror. May be hung horizontally or vertically.

Shown in Karat finish

36½ x 1¾ x 42½ in | 93 x 4 x 108 cm

“Well, the way to lighten up a dark space is with electricity. If you simply paint a gloomy room a light color, you usually end up with a dim gray room, whereas if you paint a dark space a rich lush red, its darkness can take on a shadowy inviting warmth. Darkness itself isn’t bad.”

Mark Hampton

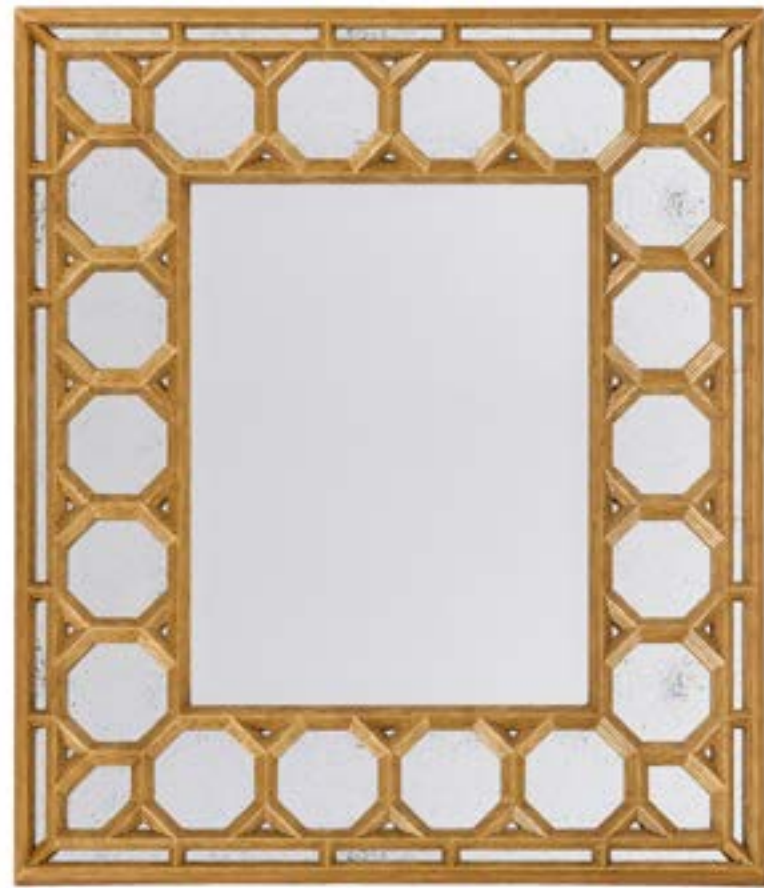
**ESME OCTAGONAL WALL MIRROR**

AXH31002.C112

Esme mesmerizes. Faceted like a jewel, the octagonal-shaped wall mirror is also set in a frame of octagons. Beveled-edge center mirror plate with coffered mirrored plates surround. A beautiful alternative to a more conventional round mirror.

Shown in Karat finish

44 x 1¾ x 44 in | 112 x 4 x 112 cm





**CELIA CONSOLE TABLE**

AXH53007.C159

Alexa Hampton brings new life to a classic console table with amazing attention to detail. The Bianco Carrera marble breakfront top is framed in Mahogany with Greek key decoration. The shape is reprised in the lower tiers. Eight turned legs with gilt banding bring it all together, beautifully.

Shown in Cambridge and Painted Gold finish

60 x 19 x 32 in | 152 x 48 x 81 cm



**REGENT CHAIR**

U3018-21

Regency-styled accent chair adds grace notes of black and gilding with its curvilinear form. The over-scolled back and seat are one – a single sinuous line. The turned and stacked roundel accents at the top and base of the seat bring elements of Regency flair. Set on molded sabre legs with brass cappings and castors.

Shown in Seal with Gold finish

21 x 30 x 35 in | 53 x 76 x 89 cm

\*VN code: AXH40002

“I think of proportion as the most concrete, physical, and tangible element of design; it is less dependent on personal taste, and more objectively quantifiable than elements such as color and contrast.”

Alexa Hampton,  
*The Language of Interior Design*





**CATHERINE SIDE TABLE**

AXH50010.C111

Sometimes an accent table is more like an exotic treasure. A series of Moorish recessed panels framed in Ebony with gilt details repeat on the end table's hexagon base. The eggshell inlaid tabletop is perfect for a cocktail – or two. Set on a plinth base.

Shown in Seal finish with Gold details

18 x 15½ x 22 in | 46 x 39 x 56 cm



“Color is always an essential ingredient in conjuring warmth and intimacy.”

—  
Alexa Hampton,  
*The Language of Interior Design*



“There are four components of design that take a room beyond pretty or livable and make it extraordinary.”

Alexa Hampton

**WALDORF SECTIONAL**

U5005

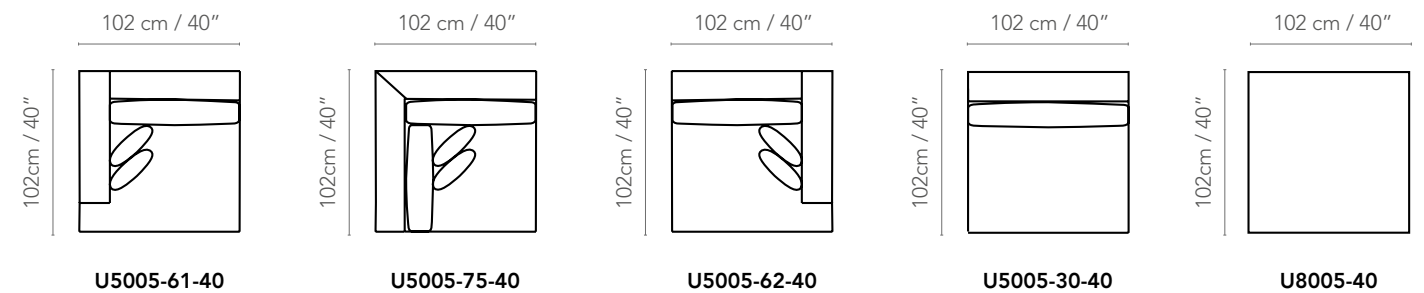
The Waldorf sectional offers a world of possibilities in five configurable pieces. You're invited to mix and meld. The vibe is modern and lush, with track-arm styling and loose cushion back and seat construction in a tight banded base. Set on tapered turned legs with a brass fluted texture.

Cambridge finish standard



“There is no golden rule per se, but rather set of rules. In my experience there are four components of design that take a room beyond pretty or livable and make it extraordinary: contrast, proportion, color, and balance.”

Alexa Hampton





“The neutral palette can work well and be absorbed without hassle.”

Alexa Hampton

I think I am experiencing a particular love for happy colors and patterns on the heels of a long stretch of beige being in fashion and in demand. Given the neutral palette in which so many rooms are decorated, these fresh, fun prints can work well and be absorbed without hassle.

#### LOUIS CHAIR

U3019-21

Perfect in pairs, this armless chair is tête-à-tête ready. This slipper chair features a loose boxed-cushion seat. The tight seat back with picture-frame detailing delivers style. Upholstered seat deck is trimmed in nailheads. This low-slung chair is set on turned, fluted and gilt tapering legs.

Shown in Salted white with gold finish

21 x 26 x 33½ in | 53 x 66 x 85 cm





**LORENZO CHAISE LONGUE**

U4027-41-66

Sinuous and sculptural, the Lorenzo chaise longue is an invitation to pause. This lounging chaise is framed in wood, with left arm facing for lovely asymmetry. Loose cushion seat and back cushion promise comfort. Set on splayed tapering legs.

Shown in Cambridge finish

28 x 66 x 30 in | 71 x 168 x 76 cm



**LORENZO RIGHT ARM FACING CHAISE**

U4027-42-66

Sinuous and sculptural, the Lorenzo chaise longue is an invitation to pause. Be mindful of the detail: the lounging chaise is framed in wood, with right arm facing for lovely asymmetry. Loose cushion seat and back cushion promise comfort. Set on splayed tapering legs.

Shown in Seal finish

28 x 66 x 30 in | 71 x 168 x 76 cm





**KATE COCKTAIL TABLE**

AXH51008.C105

Alexa Hampton designed Kate as a custom original for a beloved client's NYC flat. Now, this simple rectangular cocktail table is available to all. The coffee tabletop is detailed with side slides along the apron. Set on sculpted tapered legs with brass casters. Solid Beech and Mahogany veneer.

Shown in Cambridge finish

52 x 30 x 18 in | 132 x 76 x 46 cm

Shown in Seal finish



**HARRIS SIDE TABLE**

AXH50003.C105

Harris is geometric, generously scaled and yet ethereal, a designer go-to accent table for most any interior. Glass inserts rest atop an open trellis fretwork, creating a wonderful play of light and shadow in three lovely tiers. Detailed with bead moldings, ring turned supports and set on peg feet.

Shown in Cambridge finish

30 x 25 x 28 in | 76 x 64 x 71 cm

Shown in Seal finish





“Real comfort,  
visual and  
physical, is vital  
to every room.”

Mark Hampton



**NESS WALL MIRROR**

AXH31009

Glamour radiates from the Ness wall mirror, a modern spin on the starburst mirror. The frame of the round mirror mimics the irregular rays of the sun with machine-age precision, and the steel frame is detailed with rivets. Hampton brass finish. Mirror center plate.

36 x 2 x 36 in | 91 x 5 x 91 cm





**SPENCER ÉTAGÈRE**

AXH63001.C105

This étagère is one for the books – or collectibles or artwork – and beyond brilliant as a room divider. A traditional molded cornice tops the open bookcase, followed by four tray gallery tiers secured with turned column supports.

Shown in Seal Finish

52½ x 19½ x 59 in | 133 x 50 x 150 cm

Shown in Cambridge finish



**DEXTER WALL MIRROR**

AXH31004

Dexter is a modern solitaire inspired by a watch face. A round bevel-edge mirror plate is cast in a faceted octagonal frame. An understated yet striking decorative wall mirror from Alexa Hampton. Vintage Brass finish.

36 x 1½ x 31¼ in | 91 x 4 x 79 cm

“Studying the best examples of many different styles and eras trains the eye to see what is balanced and proportionate, what is harmonious in scale and color, and what is not, until eventually it becomes second nature.”

—  
Alexa Hampton,  
*The Language of Interior Design*





**ELLIE WALL MIRROR**

AXH31006.C156

The Ellie wall mirror takes her timeless form from a pair of Chinese Chippendale mirrors purchased by Mark Hampton for his office. The rectangular mirror plate is set in a relief geometric fretwork. Paneled Mahogany veneered frame.

Shown in Kings finish with Seal Striping

32¾ x 1½ x 45¾ in | 83 x 4 x 116 cm

“Almost all of my foyer furniture plans include four key pieces- a table of some sort, a mirror, a great light fixture, and some type of seating. I like to choose a table that has storage to keep extra keys, hats, gloves, sunglasses etc. The type of things you need to grab as you are running out the door. I typically place a mirror over this piece so that you can get one last look at yourself before you head out into the world. It is nice to have a seat or bench so that you can sit down and take your shoes on or off when you are coming or going. Lighting is incredibly important because it functions to allow you to see, but also by creating a welcoming environment to your home. When selecting the style of these pieces it is important that the pieces reflect the style of the rest of your home. After all, it is your guest’s introduction to your home.”

---

Alexa Hampton

.....  
**DINING ROOM**  
.....





**LAWRENCE DINING ARM CHAIR**

AXH41023

A classic klismos form, the Lawrence chair features English Regency details with channel reeded frame on the upper back, recessed back rails with channel detail and recessed rosettes above slim slightly curved legs. An upholstered seat features an outer welt for comfort.

Shown in 4063-65 Fabric; Cambridge Finish

24 x 22½ x 32½ in | 61 x 57.20 x 82.60 cm



**REBECCA DINING ARM CHAIR**

AXH41022

24 x 24½ x 35 in | 61 x 62.20 x 89 cm

Shown in 8108-86 Fabric; Cambridge Finish



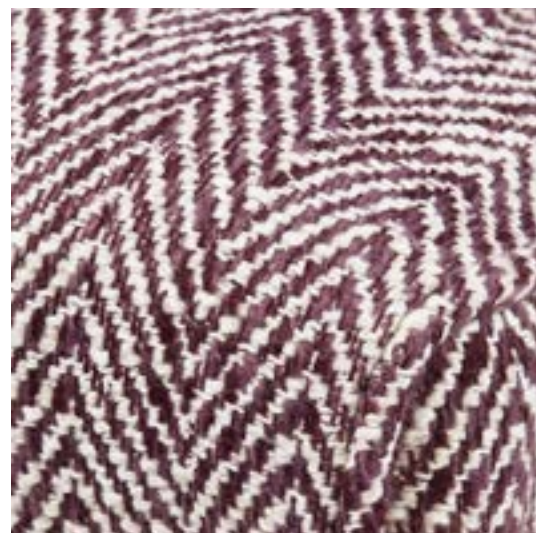
**REBECCA DINING SIDE CHAIR**

AXH40022

With a nod to Art Deco sensibilities, Rebecca is a feminine dining chair with softly curved wood and upholstered back on tapered and fluted leg with small nail head details at upper leg.

Shown in 1267-64 Fabric; Salted white Finish

19 x 23½ x 34¾ in | 48.30 x 59.70 x 88.30 cm





**CHAMILLE ACCENT CHAIR**

U3070-25

Chamille demonstrates a recapturing of French elegance and is modeled after a historical Louis XV carved chair. Also a dining or accent chair, Chamille is shown in Salted White finish on cabriole legs with natural brass nail heads.

Shown in 8108-66 Fabric

25 x 23½ x 37½ in | 64 x 60 x 95 cm

**CHAMILLE SLIPPER CHAIR**

U3069-22

Shown in 8108-66 Fabric; Salted white Finish

22¾ x 23½ x 36¾ in | 58 x 60 x 93 cm





**LILY SIDE CHAIR**

AXH40001

Queen Anne, meet Lily, a reimagining of your classic profile. Serpentine with scalloped apron, button-detailed upholstered seat back and tight seat, Lily impresses from every angle. This dining room chair beautifully pivots on sabre legs.

Shown in Hipster Grey Finish

23 x 25 x 38 in | 58.40 x 63.50 x 96.50 cm



**MANNING ACCENT CHAIR**

U3067-26

The Manning Chair is a striking take on a smoking chair with a curved upper rail, tufted back and curved seat. Long tapered legs and nail heads add subtle embellishment.

Shown in 9020-25 Leather; Cambridge Finish

25½ x 26 x 34½ in | 65 x 66 x 88 cm

\*VN code: AXH42011





**OLIVIA DINING TABLE**

AXH54007.C107

A musical quartet of shaped and carved legs support this extendable dining table top. With brass sabots and legs for days, Olivia is sure to turn heads.

Shown in Kings Finish

Open: 132 x 52 x 30 in | 335.3 x 132.1 x 76.2 cm  
Closed: 84 x 52 x 30 in | 213.3 x 132.1 x 76.2 cm





**SUTTON DINING TABLE**

AXH54008.C105

An interpretation of a French Empire antique, Sutton features a gray marble stone top, faceted pedestal base on three carved legs with scroll accents.

Shown in Cambridge Finish

48 x 48 x 30 in | 122 x 122 x 76 cm



**LEO JUPE DINING TABLE**

AXH54005.C107

Leo is a Restoration revival table with carved pedestal, inset fold out leaves, scrolled tri-base and claw feet, with radiating veneer top.

Open: 78 x 78 x 30 in | 198 x 198 x 76 cm

Closed: 63 x 63 x 30 in | 160 x 160 x 76 cm







**FRANCIS DINING SIDE CHAIR**

AXH40021

With Baltic influences, the Frances side chair features half round back with inset relief and carved sunburst detail.

Shown in 9036-73 Leather; Cambridge Finish

20 x 24 x 36 in | 50.80 x 61 x 91.50 cm



**FRANCIS DINING ARM CHAIR**

AXH41021

With Baltic influences, the Frances armchair features a scrolled arm, half round back with inset relief and carved sunburst detail.

Shown in 9020-42 Leather; Seal Finish

24 x 24 x 36 in | 61 x 61 x 91.50 cm





**DUANE MARBLE COMMODE**

AXH60013.C105

A mix of personalities, Duane combines chic French Directoire fluted legs with gilt petal details. Recessed Greek key brass drawer pulls embellish modest wood drawer faces. Shown with gray marble stone top.

Shown in Cambridge Finish

63¼ x 20 x 36¼ in | 161 x 51 x 92 cm

Also available with wood top: AXH60012.C105



"I like a mix of wood finishes in every interior regardless of region. The one thing all designers and homeowners should avoid is repeating the same finish or wood tone too often."

—  
Alexa Hampton

Shown in Seal finish



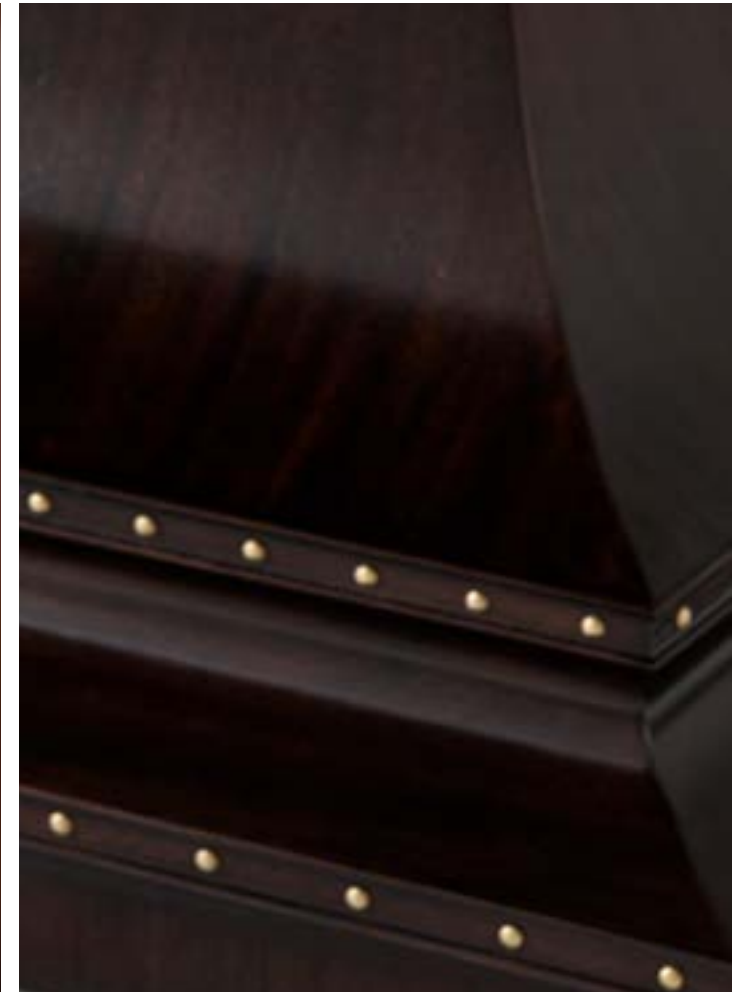
**SIENA EXTENDING DINING TABLE**

AXH54003.C105

The Siena is inspired by travels through Italy. The extendable dining tabletop in Mahogany veneer is detailed with a Hampton Brass reeded edge. Two down-swept and tapered monolithic pedestals form the molded Cavetto base, decorated with brass nailhead trim – a final grace note. Expands with one leaf.

Shown in Cambridge finish

Open: 96½ x 46½ x 30 in | 245 x 118 x 76 cm  
Closed: 78½ x 46½ x 30 in | 199 x 118 x 76 cm





"I believe every room should have contrast (in color and scale), it should have pleasing proportions, it should meaningfully contend with color, understanding that color can change the character of a space, and that it all should be balanced. Good luck, right? Most of all, one's interiors should be personal. They shouldn't look churned out by a designer."

Alexa Hampton

**JACKSON SIDE CHAIR**

AXH40008COM.C105

Jackson shines among dining chairs: brass roundels, molding capital legs and cast brass scroll feet add a twinkle of metal. Neoclassical style with padded over-srolled back and box upholstered seat. This dining side chair has all the comfort an upholstered chair.

Shown in Cambridge Finish

20½ x 28½ x 37 in | 52.10 x 72.40 x 94 cm



**JACKSON ARMCHAIR**

AXH41008COM.C105

Jackson shines among dining chairs: brass roundels, molding capital legs and cast brass scroll feet add a twinkle of metal. Neoclassical style with padded over-srolled back and box upholstered seat. This dining armchair has all the comfort an upholstered chair.

Shown in Cambridge Finish

28¼ x 29½ x 37¼ in | 71.75 x 74.93 x 94.60 cm



### HUNT ÉTAGÈRE

AXH63002.C109

Inspired by a Danish antique, the four-tier Hunt étagère is rife with broader global influences. Like the molded pagoda cornice. Or the spiral column supports detailed with Classic carved capitals and set on lobed tapering legs. Four open shelves offer a world of storage and display space.

Shown in Seal finish

36½ x 19¼ x 69 in | 93 x 49 x 175 cm

“Choosing furniture of the proper size and proportion in relationship to the size of the room can make a small room feel more expansive, or bring a grand space down to a more inviting, human scale”

—  
Alexa Hampton,  
*The Language of Interior Design*





**HAMILTON SIDEBOARD**

AXH61003.C105

Inspired by a favorite French antique buffet sideboard. Bianco Carrara marble top with sculpted corners. Fluted column uprights detailed with cotton-reel cast capitals. Door/drawer fronts adorned with cast brass handles and molding. Turned and fluted tapering legs with a hand painted metallic brass finish. Mahogany solids and Crown veneer.

Shown in Cambridge finish

91 x 20½ x 39½ in | 231 x 52 x 101 cm



"I think it is important for rooms to have pieces of varying heights to break up any repetitive horizontal lines. I find this to be especially significant in dining rooms whereby necessity much of the furniture is all relatively similar in height; dining tables, chairs, and sideboards. I often enlist the help of pedestals or trees in these rooms to break up monotony and to provide some decorative lift the room."

Alexa Hampton



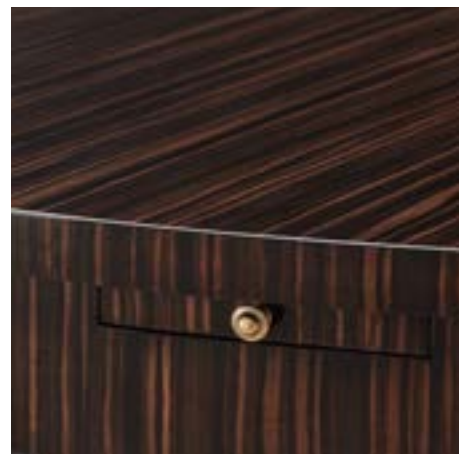
**EDWARD EXTENDING DINING TABLE**

AXH54001.C117

An Austrian center table with neoclassical DNA inspired this extendable dining table from the Alexa Hampton Collection. Striking sunburst Amara veneered top with Amara finish expands with six radial leaves. The pedestal is a series of four square reversed tapered legs joined by an X stretcher. Hampton brass finish feet.

Shown in Amara finish

Open: 84 x 84 x 30 in | 214 x 214 x 76 cm  
 Closed: 60 x 60 x 30 in | 152 x 152 x 76 cm



**ALBERTO SIDE CHAIR**

AXH40005COM.C105

The Alberto Side Chair is an homage to the masters of French Moderne style with its curvilinear form, arched padded back, upholstered seat set in a molded rail, and chamfered tapered legs with stylish brass cappings.

Shown in Cambridge finish

20½ x 24½ x 34 in | 52.10 x 62.20 x 86.40 cm



**ALBERTO ARMCHAIR**

AXH41005COM.C105

The Alberto Arm Chair is an homage to the masters of French Moderne style with its curvilinear form, arched padded back, upholstered seat set in a molded rail, and chamfered tapered legs with stylish brass cappings.

Shown in Cambridge finish

24½ x 21½ x 34 in | 62.20 x 54.60 x 86.40 cm



**SEBASTIANO EXTENDING DINING TABLE**

AXH54002.C109

Sebastiano combines a historic silhouette with an edgy modern sensibility. Rectangular dining table is curved with an apron bound in brass. Set on slatted baluster legs outlined in gilt. Company coming? It's an extendable dining room table with three leaves.

Shown in Seal finish

Open: 162 x 50 x 30 in | 411 x 127 x 76 cm

Closed: 90 x 50 x 30 in | 229 x 127 x 76 cm





**DANTE SIDE CHAIR**

AXH40010COM.C157

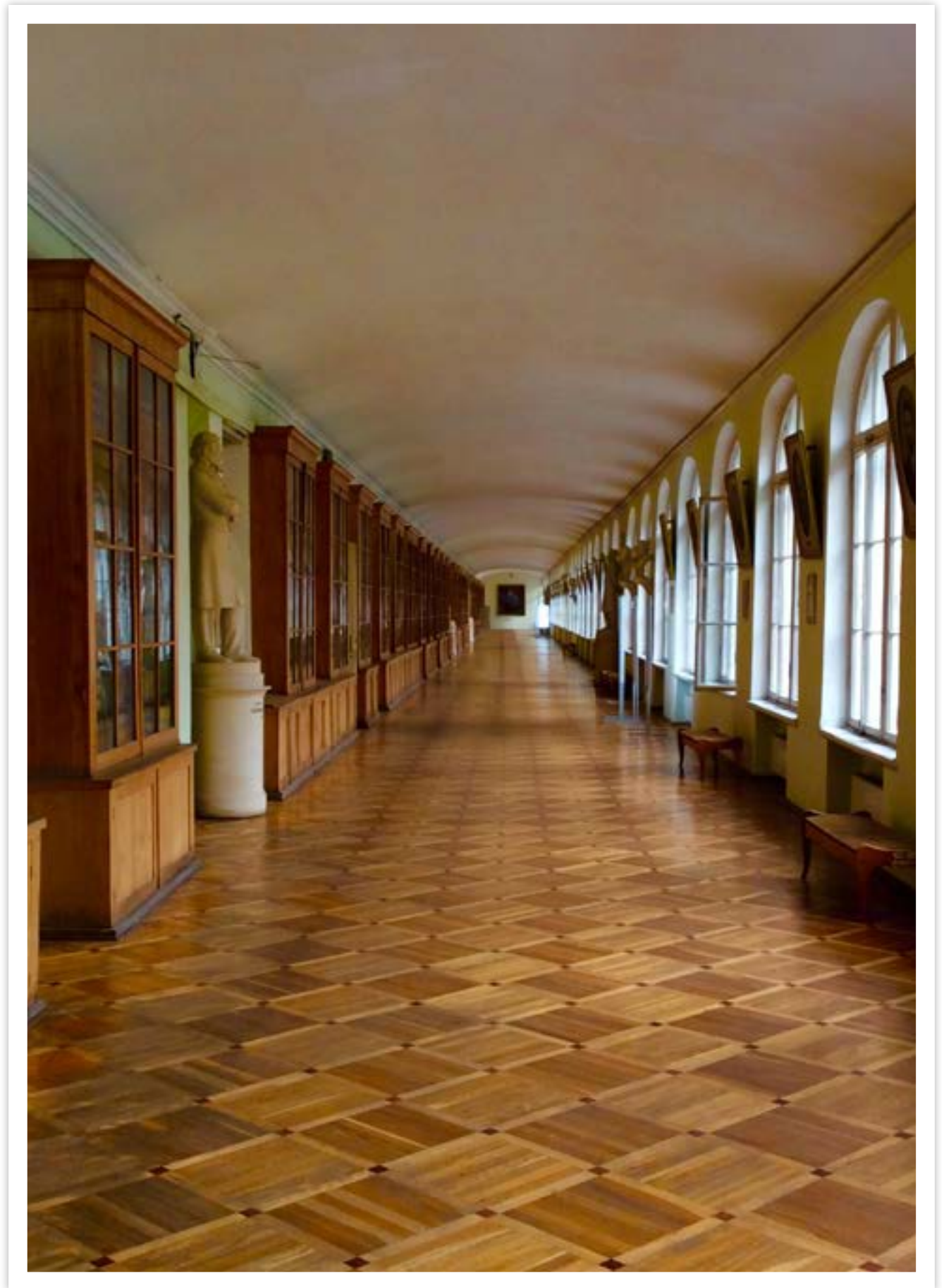
Dante is all about details. The dining room chair back is a twofold affair: a curved backrest above an egg-and-dart swagged backrail. Grace notes on the frame include roundels and guilloche carvings on the sides and back. Upholstered seat is set on tapered legs with brass-finish cappings.

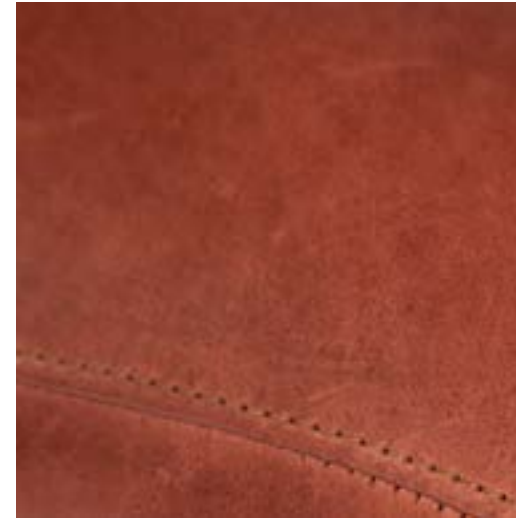
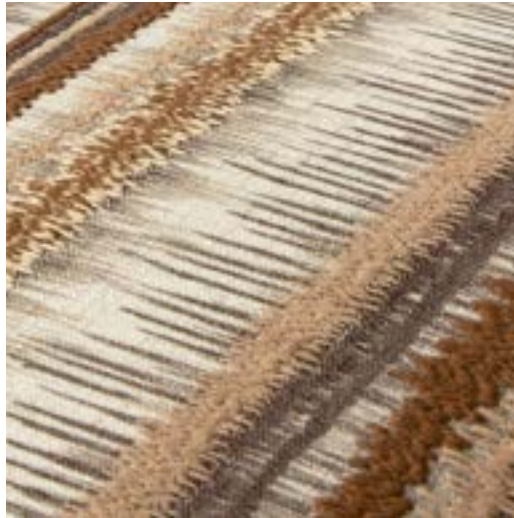
Shown in Seal finish with Gold detailing

19¼ x 21 x 35½ in | 48.90 x 53.34 x 90.17 cm

“Furniture should be human-scaled, designed to accommodate the proportions of the human body comfortably.”

\_\_\_\_\_  
Alexa Hampton,  
*The Language of Interior Design*





**MALTESE CHAIR**

AXH40009COM.C105

The geometric Maltese dining chair back commands attention with a pierced cruciform splat back and brass details. Perfectly upholstered seat cushion. Set on turned and carved octagonal legs with brass feet.

Shown in Cambridge finish

19 x 24½ x 35 in | 48.26 x 62.23 x 88.90 cm



**MALTESE ARMCHAIR**

AXH41009COM.C105

The geometric Maltese dining chair back commands attention with a pierced cruciform splat back and gilt details. Perfectly upholstered seat cushion. Down-swept arms with turned uprights. Set on carved and turned octagonal legs with brass feet.

Shown in Cambridge finish

22½ x 24½ x 35 in | 57.15 x 62.23 x 88.90 cm



**NADINE SIDE CHAIR**

AXH40007COM.C107

Nadine is a dining room chair with an amazing back story. Mahogany trellis fretwork covers the exterior chair back, casting lovely geometric shadows. The armless dining chair back and seat are fully upholstered and set on square tapered legs.

Shown in Kings finish

19 x 26 x 36 in | 48.30 x 66 x 91.40 cm



**GUSTAV SIDE CHAIR**

AXH40003COM.C157

The Gustav dining chair features a beautiful Gustavian silhouette, including baluster slatted back and tapered legs with collars. An ebonized finish detailed in gilt to highlight the chair's interesting shape. Completed with a tight upholstered seat.

Shown in Seal finish with Gold detailing  
21 x 22 x 38 in | 53.50 x 55.90 x 96.50 cm





**OSCAR SIDEBOARD**

AXH61004.C164

Boldly drawn breakfront-top sideboard beautifully serves form and function. Two central drawers and two relief-panel door compartments form the primary body of the sideboard buffet. Three baguette relief drawers with pullout trays offer extra storage space. Set on raised turned and tapered legs.

Shown in Cambridge finish with Seal panels

78 x 20½ x 38 in | 198 x 52 x 97 cm





**BENEDICT BUFFET**

AXH61002.C109

Moderne meets Midcentury Modern in this singular sideboard buffet from the Alexa Hampton Collection. An ebonized finish with channeled design conceived with four drawers and doors, detailed with oval Hampton brass finished handles. Sideboard top is ready to serve with a three-quarter gallery. Reeded tapered legs with brass cappings. Mahogany with Seal finish.

Shown in Seal finish

68½ x 18 x 34 in | 174 x 46 x 86 cm

BEDROOM





**AVA BED**

U7075K

With a well-contoured form and button tufting, the Ava bed brings drama and comfort to the head of the bed. Shown with an upholstered show wood base finished in Cambridge.

Shown in 1241-94 Fabric

81 x 86 x 60 in | 206 x 218 x 152 cm

\*VN code: AXH83005



**CHARLIE BENCH**

U8073-57

The Charlie Bench is a storage enthusiast's dream. Perfect for the foot of the bed or as a coffee table ottoman, Charlie has secret storage beneath his tufted top. A modified raised Greek key design around the base adds refinement.

Shown in Athenaeum Leather; Cambridge Finish

57 x 19¼ x 19 in | 145 x 49 x 48 cm

\*VN code: AXH44013



**GARTH NIGHTSTAND**

AXH50030.C105

A sophisticated Neoclassical design with Biedermeier flavor, Garth has strict pilaster legs with brass trimmings. A veneered top and apron with pull drawer sit atop a tall open space meant to accommodate accessories on a veneered lower base.

Shown in Cambridge Finish

30 x 21 x 29 in | 76 x 53 x 74 cm







**RICHARDS BED**

U7074K

Simple, yet stately. The Richards Bed boasts a carved wood frame with frame and inset channeled upholstery.

Shown in 8107-92 Fabric; Salted white Finish

80½ x 85 x 56 in | 204 x 216 x 142 cm



**HINES BENCH**

U8064-54

Hines is a classic upholstered bench with upholstered sides and seat in all over button tufting, long turned legs and brass casters.

Shown in 9020-42 Leather; Hipster Grey Finish

55 x 21 x 26 in | 140 x 53 x 66 cm

\*VN code: AXH44010





**MANNIX NIGHTSTAND**

AXH50032.C157

A sexy cabinet reminiscent of the roaring 1920's, the Mannix is decked out with eglomise glass and gilt painted lines. Two substantial drawers with brass toggle pulls provide desirable storage.

Shown in Seal Finish with Gold Detailing

28 x 21 x 28 in | 71 x 53 x 71 cm



**GREGORY BENCH**

U8072-42

Based on a Neoclassic bench, the Gregory features a reeded upper rail, fluted legs and rosette capitals. A turned wood stretcher meets a fluted X design. With a pull-up upholstered seat, the Gregory makes for great extra seating.

Shown in 4024-92 Fabric; Cambridge Finish

42 x 18 x 19 in | 107 x 46 x 48 cm

\*VN code: AXH44011







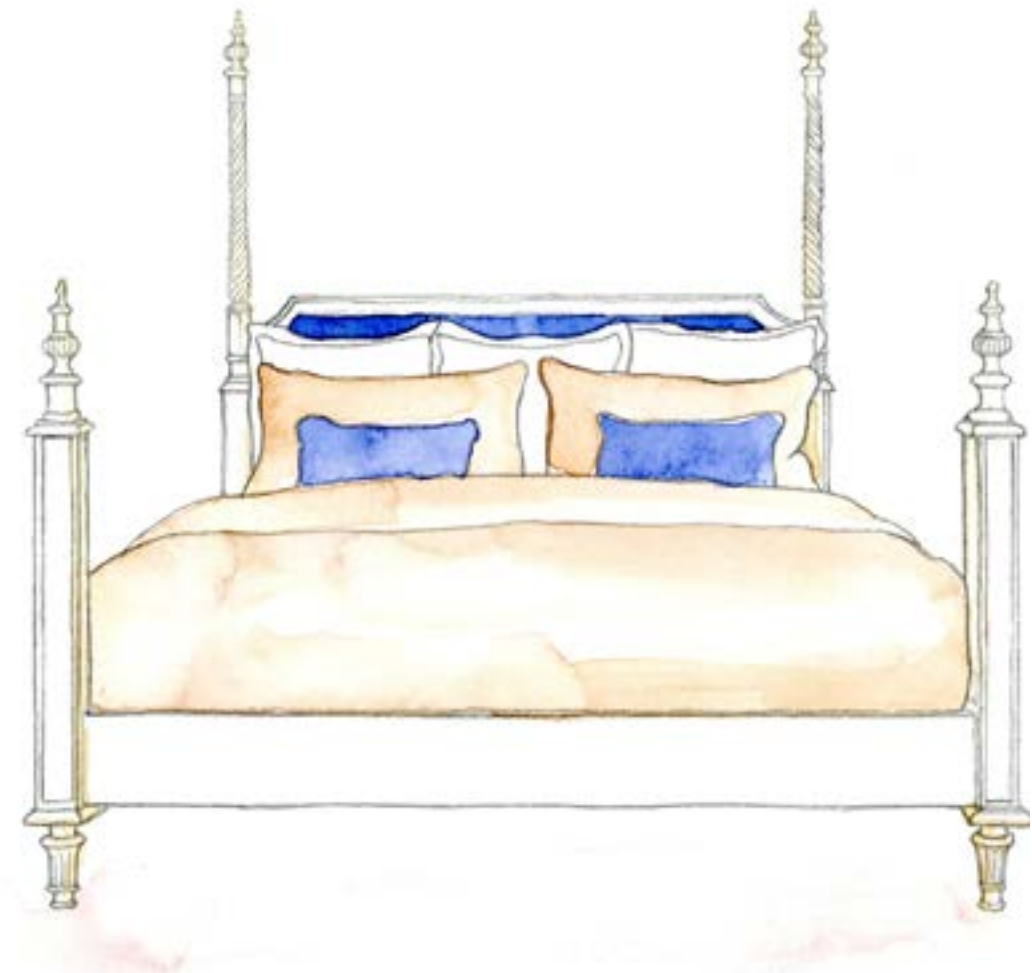
**FAIRBANKS BED**

U7035K

Fairbanks offers a new twist on the classic four-poster bed with French flair. It's a statement piece for the bedroom. Two carved posts topped with finials frame a tufted inset headboard with scalloped edges. The theme is reprised in an open-toe poster footboard. Set on turned and fluted feet.

Shown in Salted White finish

86 x 91 x 90 in | 218 x 231 x 229 cm



“Comfort is key for a living space and how you live.”

\_\_\_\_\_  
Alexa Hampton

I think it is always important to remember that comfort is key for a living space and how you live. For houses with children, especially, I try to use fragile fabrics like silk on curtains or pillows, as opposed to chairs or sofas where they get more abuse.

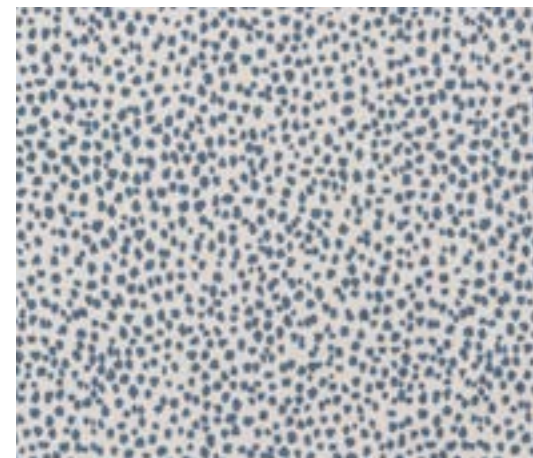
**JULIET BENCH**

U8033-50

Juliet has found her destiny at the foot of the bed. Leaf and flowerhead capitals adorn the apron of the bench, finished with brass-capped reeded legs, and a deeply tufted and welted bench seat.

Shown in Salted White finish

50 x 20 x 20½ in | 127 x 51 x 52 cm





**PLUM BED**

U7029K

An undeniably plum position for the master bedroom. This iconic Alhambra arch padded headboard outlined in nailhead trim borrows freely and reverently from Mughal architecture. Fully upholstered peninsula bed, with expertly upholstered rails, is set on tapered block feet.

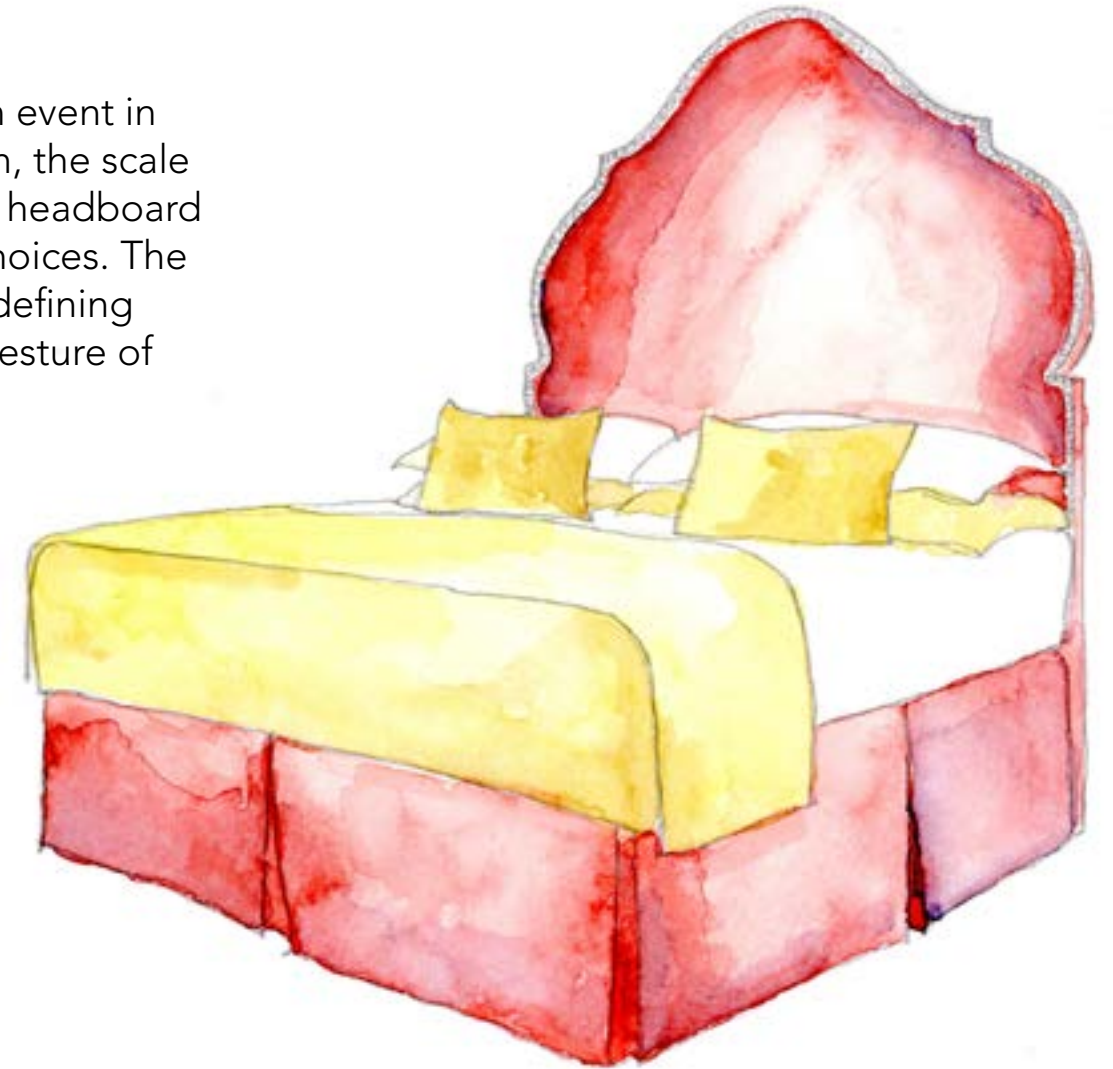
Shown in Salted White finish

84 x 90 x 88 in | 213 x 229 x 224 cm



“As the main event in any bedroom, the scale and size of a headboard are critical choices. The result is the defining decorative gesture of the room.”

—  
Alexa Hampton



**REGINA SIDE TABLE**

AXH50028.C110

Sometimes nightstand, accent table or end table, sleek-lined Regina works a room with modern finesse in gorgeous Salted White Lacquer. Ample storage and display space with one open shelf with panel back and two drawers with jewelry-like Hampton Brass finish handles. Set on octagonal tapered feet.

Shown in Salted White finish

26 x 21 x 28 in | 66 x 53 x 71 cm



**OLGA SIDE TABLE**

AXH60004.C161

Inspired by a Russian antique, Olga is a jewel – and a side table. Crafted in Mahogany solids and veneers, Olga boasts three geometric paneled drawers and diamond-faceted side panels, all in Kings finish with gilt details. The reeded and gilt base sits on square tapered legs. Molded-edge Bianco Carrera marble top.

Shown in Russian and Painted Gold finish

28 x 20¾ x 27¾ in | 71 x 53 x 71 cm



**VIGGO DRESSER**

AXH60003.C111

A Biedermeier moment, architectural detailing shines in the six-drawer Viggo dresser fitted with brass handles (in Hampton brass finish) and ivory-finish escutcheons. Beautiful stepped-caddy dresser top and bracket feet. Solid Cherry and veneers.

Shown in Vienna finish

70 x 20 x 37½ in | 178 x 51 x 95 cm

“Interiors that combine great beauty with livability are always the goal.”

Alexa Hampton

My style is eclectic. However, I am drawn to classic forms, and I prefer logical spaces to impractical ones. Interiors that combine great beauty with livability are always the goal.

**VIGGO TALL SÉMANIER CHEST OF DRAWERS**

AXH60006.C111

A Biedermeier moment, architectural detailing shines in the seven-drawer Viggo chest of drawers fitted with brass handles (in our Hampton brass finish) and ivory-finish escutcheons. Beautiful stepped-caddy dresser top and bracket feet. Solid Cherry and veneers.

Shown in Vienna finish

39 x 21 x 60 in | 99 x 53 x 152 cm





**CECIL CHEST OF DRAWERS**

AXH60005.C162

Historically inspired, yet updated, the Cecil chest of drawers is perfect for the bedroom and beyond. Three frieze drawers sit atop three more long drawers with bold brass handles. Flanked by spiral turned columns and set on block feet.

Shown in Salted White with Hipster Grey Striping

49½ x 24 x 33¾ in | 126 x 61 x 86 cm



“In an era when there is increasing despair over the inhumanity of the world around us, the concerns of decorating rather than seeming vain and irrelevant provide for me a wonderful refuge.”

Mark Hampton







**ANDREW BUFFET**

AXH61001.C162

Andrew puts a modern spin on the traditional buffet cabinet. There's storage aplenty with four frieze drawers, two center doors opening to interior shelves, plus open storage on buffet sides. Doric pilasters flow into turned, tapered legs capped in brass.

Shown in Salted White with Hipster Grey Striping

80 x 21 x 38 in | 203 x 53 x 97 cm



**MATILDE SIDE TABLE**

AXH50013.C109

This French neoclassical side table is based on an antique in Alexa Hampton's own home. Cherished details abound: pierced brass gallery with Bianco Carrara marble top, pullout tray, single drawer with cast brass handles, tapered legs with brass capitals and feet, and pierced brass gallery lower shelf. Perfect as an end table, too!

Shown in Seal finish

26 x 18 x 28 in | 66 x 46 x 71 cm

"The iconography that accompanies neoclassicism, for example, has always spoken to power and those who would seize it."

—  
Alexa Hampton





**DENISON SLEIGH US KING BED**

AXH83001.C105

The Denison bed is a nod to Anglo-Indian furniture. Note the modestly scrolled headboard and footboard with caned panels. Reeded rails, flowerhead carved roundels, scroll carvings and turned tapered legs add authenticity and charm.

Shown in Cambridge finish

82¼ x 96 x 53 in | 209 x 244 x 135 cm



**BLIX SIDE TABLE**

AXH50001.C105

The Blix side table is a colonial flavored piece with a nod to Anglo-Indian furniture. A framework of spiral turned and tapered legs supports two frieze drawers below a reeded rectangular top. Two caned shelves for stylish storage and display. Mahogany veneered with Cambridge finish.

Shown in Cambridge finish

28 x 21 x 28 in | 71 x 53 x 71 cm

“The bedroom to me is a crucial space to design well.”

—  
Alexa Hampton

Since I am an utter failure in the kitchen, the hub of family life in our house is always the bedroom. It is where the 5 of us laugh, cuddle, cry and have our most meaningful family time. It is our safe haven, our cocoon and our respite. I also just plain love to sleep. For all of these reasons, the bedroom to me is a crucial space to design well.





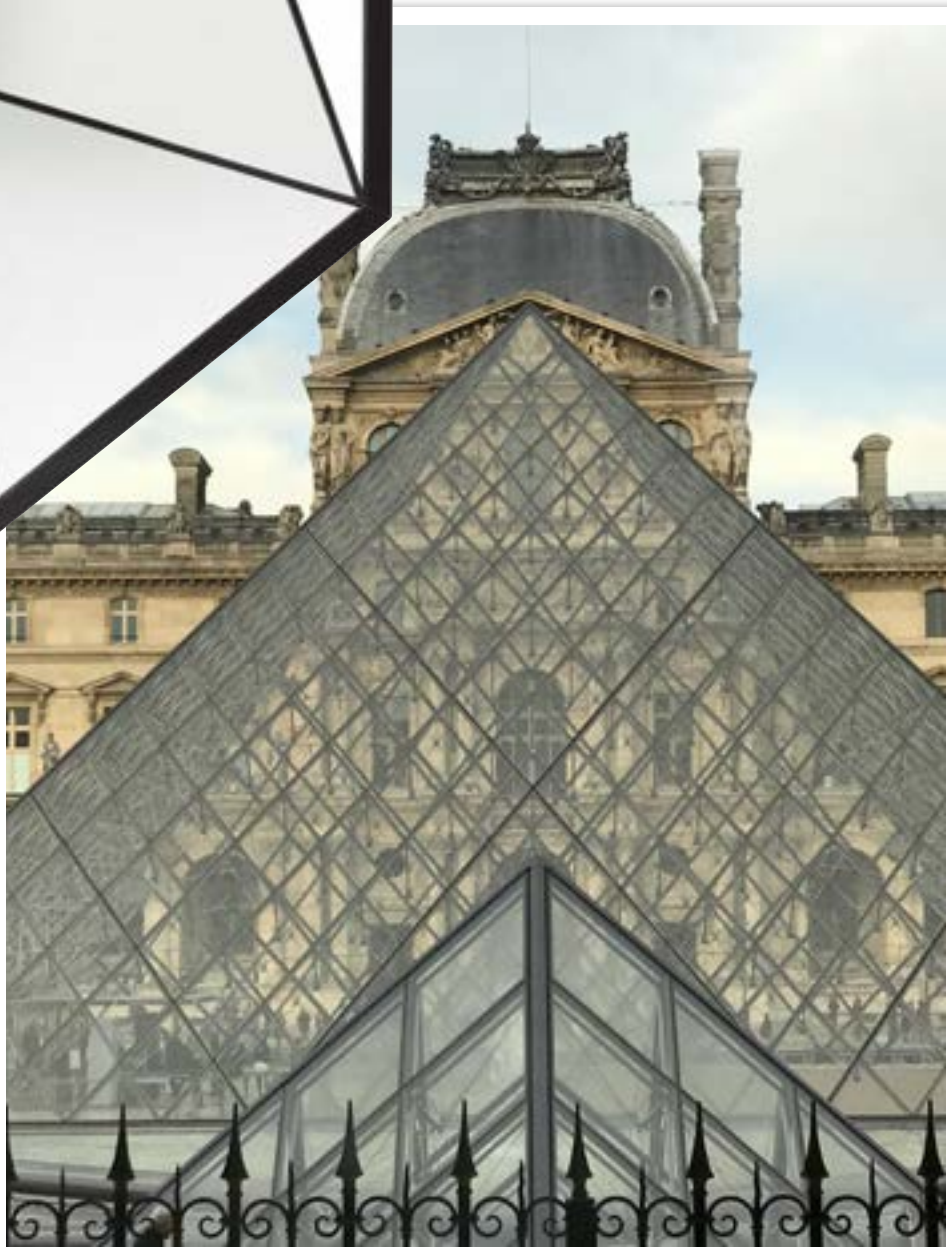
**VLAD HEXAGONAL WALL MIRROR**

AXH31005.C115

The Vlad mirror is like a piece of abstract art – interesting and open to interpretation. Overall, the wall mirror is hexagon shaped. Strategically inserted geometric relief plates act as prisms, toying with shape and light. A sculptural and dimensioned mirror.

Shown in Black Lacquer Finish

40 x 4 x 63 in | 102 x 10 x 160 cm





**HP BENCH**

U8034-29

A faithful reproduction of custom design from Alexa Hampton's own home. Unique twin pi-shaped base, with buckle and nailhead trim detailing, offers infinite decorating possibilities in any floor plan, but you'll spot HP Bench in service as a fireplace fender in the designer's NYC flat.

Shown in Salted White with Gold finish

29 x 16 x 16 in | 74 x 41 x 41 cm



**LEIF CHEST OF DRAWERS**

AXH60010.C105

Three relief-shaped drawers, each with a trio of brass drop handles distinguish this chest of drawers. Modern, geometric and sculptural, Leif works a floor plan. Square tapered legs capped in brass. Chevron Mahogany veneered and crossbanded.

Shown in Cambridge finish

42 x 20 x 34 in | 107 x 51 x 86 cm





### SCOTT CHEST OF DRAWERS

AXH60001.C107

The Scott Chest of Drawers radiates charm with ten starburst-relief carved drawers. Campaign drawer handles recall the design's Anglo-Indian inspiration. Set on turned bun feet. Crafted in Mahogany and Mahogany veneers. Lustrous Kings finish.

Shown in Kings finish

45 x 19 x 45¼ in | 114 x 48 x 115 cm





**MCCOMBS DRESSER**

AXH60002.C159

There's a not-so-quiet dignity to the McCombs Dresser with three fretwork relief frieze drawers, and six generously sized paneled drawers with Hampton finish brass handles below. A chamfered-edge dresser top and turned tapered legs balance details from top to bottom.

Shown in Cambridge and Painted Gold finish

57 x 20 x 36 in | 145 x 51 x 91 cm



OFFICE







**EUGENIA DESK**

AXH71005.C161

This Russian Neoclassical stunner features inlay brass details on the apron and drawer faces in a classic modernized diamond pattern that stays true to historical influences. A leather inset top compliments the fluted legs and brass cappings bringing balance from top to bottom.

Shown in Russian Finish with Gold Details

65 x 30 x 30 in | 165 x 76 x 76 cm



**ELLEN DESK**

AXH71006.C105

The Ellen Desk is an graceful modernized take on a classic Chinoiserie style desk. With raised Greek key apron and carved corner details, the Ellen also boasts 3 drawers for added storage.

Shown in Cambridge Finish

53¾ x 25¼ x 30½ in | 137 x 64 x 78 cm



**FRAISER DINING CHAIR**

AXH41024

This Swedish Neoclassical inspired armchair features a sleigh form back rail, open cantilever arms, and brass cappings. Upholstered seat, back and inner arms lend comfort to this accent chair.

Shown in 4063-65 Fabric; Cambridge Finish

24 x 25½ x 33½ in | 61 x 64.80 x 85.10 cm





“Design is a matter of balancing different needs and outlooks—practical and aesthetic, masculine and feminine, designer and client, dream and reality.”

Alexa Hampton,  
*The Language of Interior Design*

**MIRABELLA WRITING TABLE**

AXH71001.C162

Très chic. This writing table is a twist on a French classic. Desktop boasts a gilt-tooled leather inset and frieze slides. Flowerhead fretwork wraps around the apron, outfitted with three drawers. The desk stands on turned and fluted tapering legs.

Shown in Salted White with Hipster Grey Striping; Inset Leather finish standard

60 x 28 x 31 in | 152 x 71 x 79 cm





**HARDIN SOFA TABLE**

AXH71003.C105

Inspired by the 19th Century age of exploration, this reeded-edge drop-leaf console table doubles as a writing table. The top is set on turned, reeded and spiral-carved balusters with down-swept legs, terminating in brass cappings with castors. Detailed with two ivory-handled drawers.

Shown in Cambridge finish

Open: 72 x 28 x 30 in | 183 x 71 x 76 cm  
 Closed: 49½ x 28 x 30 in | 126 x 71 x 76 cm

“On my desk: I have at least one coffee, my laptop, iphone, docked ipod, ipad, my reading glasses, a rubber band for my hair, a sharpened black warrior pencil, a black uni-ball pen, a black sharpie (big and fine point), a scale ruler, a notepad and the earring I just took off to talk on the phone.”

\_\_\_\_\_  
 Alexa Hampton



**STEPHANIE CHAIR**

U3022-24

An accent chair with personality, Stephanie charms with a pierced trellis back that narrows, in hourglass fashion, to brass-capped sabre legs. Down-swept arms embrace a tight upholstered seat. A wonderful geometry of form in Mahogany.

Shown in Salted White finish

24 x 24 x 34½ in | 61 x 61 x 88 cm

\*VN code: AXH41011



**MARIA CHAIR**

AXH40004

Decidedly neoclassical in inspiration – with a continental flair – the Maria chair pairs brilliantly with a wide variety of upholstery styles, because of its timelessness. The chair is framed in wood, with a notable serpentine seat rail. The oval back is curved for comfort. Set on paneled square tapering legs.

Shown with TAUS Fabric, only available with selected fabric from VN Fabric.

19¾ x 22 x 37½ in | 50.16 x 55.88 x 95.25 cm



**BLITZER SIDE CHAIR**

AXH40006

Chinese Chippendale style is all at once exotic and familiar. This pierced trellis-back chair makes an eclectic statement around a variety of dining room tables. Drop-in upholstered seat cushion. The dining room chair is finished with square tapered legs joined by stretchers.

22 x 23 x 36 in | 55.88 x 58.42 x 91.45 cm





“Minimalism,”  
he admonished,  
“is for the  
very young.”

Mark Hampton

**PIERRE CHAIR**

U3017-25

Pierre is a silhouette forward accent chair with arched baluster splat back, perfectly tailored tight seat, and sabre legs with brass cappings. A versatile accent chair in Mahogany.

Shown in Seal with Gold finish

25 x 24 x 33 in | 64 x 61 x 84 cm



**GORDON PEDESTAL DESK**

AXH71002.C105

True to its French Moderne lineage, Gordon is a study in curves and angles. Two shapely filing drawers flank the knee-hole. The desktop is ready to work with a two-drawer superstructure, and at the frieze, three drawers and two end slides. Set on splayed legs with brass cappings.

Shown in Cambridge finish.

68 x 33 x 37 in | 173 x 84 x 94 cm



# The **Alexa Hampton** Collection

## DESIGNER RESOURCES

### ALEXA HAMPTON CUSTOM FINISH OPTIONS

---

Alexa Hampton's Custom Finish options open the door to a multitude of colors and finishes. According to Alexa, "The one thing all designers and homeowners should avoid is repeating the same finish or wood tone too often." She is inspired daily by her surroundings, travel, family, clients and colleagues, so why shouldn't you?

Behind the scenes, the Theodore Alexander team expertly manages every detail to order allowing you to create one-of-a-kind Alexa Hampton pieces that cannot be imagined elsewhere. The possibilities are endless! Let us be your workroom and help bring your vision to life!

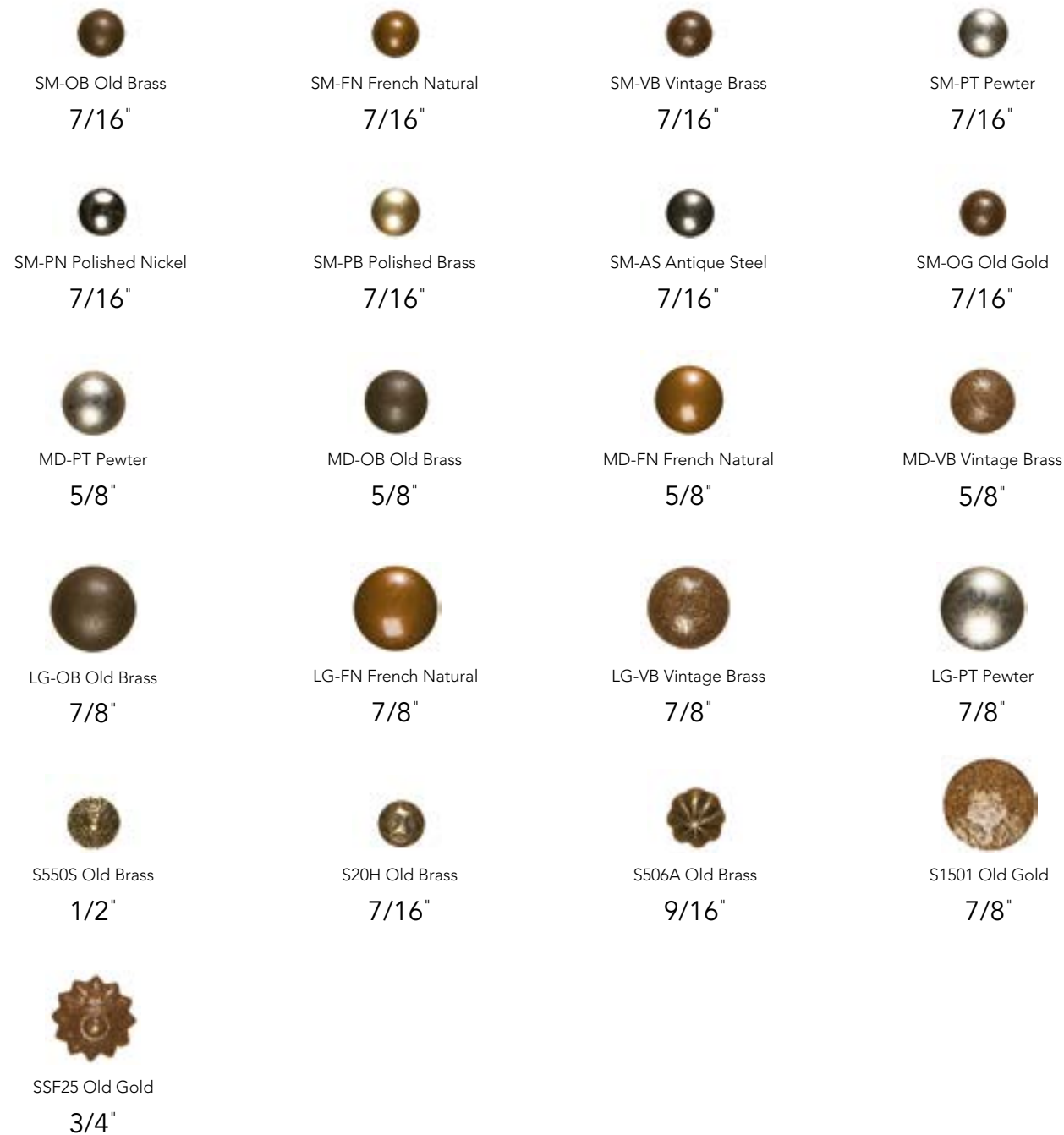
---

Theodore Alexander Upholstery finishes, as well as Alexa Hampton finishes and Custom Palette finishes, are available on all upholstery. Theodore Alexander Upholstery finishes are NOT available on Alexa Hampton case goods.

For more information on the Alexa Hampton Collection please email us at [info@theodorealexander.com](mailto:info@theodorealexander.com) or call us at 336-885-5005.

Theodore Alexander is committed to being a premier resource for the interior design trade. To accomplish this, The Alexa Hampton collection is available to custom order in 8 exclusive finishes designed by Alexa Hampton, as well as the 45 Theodore Alexander Custom Palette finishes. All Theodore Alexander upholstery fabrics and C.O.M. can be used on dining chairs, sofas, and accent chairs. Available nail head options are below

## AVAILABLE NAIL OPTIONS



## THE ART OF QUALITY, STYLE AND COMFORT

### FRAMES

The typical Theodore Alexander frame is made with 1 1/16" thick rails and 1 1/4" thick back leg posts. However, rails are as thick as 2 1/8" when necessary. (Back legs feature one piece post construction. Both back post and front legs become integral parts of the frame by being double doweled into the side and front rails and secured with glued and screwed corner blocks. This does not apply to all legs in this collection due to the various options). All joints, braces and corners are double doweled and secured with glue and screws.

### SPRING UP

A quality eight-way hand tied seat construction is essential to the comfort of any upholstered furniture. Just as a quality box spring is vital to the comfort of a mattress, the comfort that you experience from a sofa cushion is dependent on a quality eight-way hand tied construction. While many companies claim to offer eight-way hand tied construction, extremely few produce a quality product. Theodore Alexander produces a true high quality eight-way hand tied job which includes:

Only 7 ply nylon twine is used.

Coiled seat springs supported by propex webbing with steel bands under each row of springs.

Seat springs four rows deep from front to back where space allows. Across the width of the seat, there should be a row of coiled springs approximately every 6 inches.

Coil springs are available in various gauges of firmness. In order to provide comfort and proper support Theodore Alexander formulated each seat with up to five different gauges of springs in seats. In general firmer springs are used in the front and side rows for support, while softer springs are used in the middle for comfort.

Edge wire extends around the entire perimeter of the springs. (Does not apply to this collection)

Springs are insulated with cotton to minimize noise.

Sinuuous wire springs are used in the back as the support foundation for Marshall unit springs or the placement of a back pillow.

### CUTTING AND SEWING

Every piece produced by Theodore Alexander is cut individually to ensure pattern match. Great care and thought is given to the placement of the fabric pattern on your chair or sofa. Fabric is marked by pattern and cut in such a way as to leave a sew line on the face of the fabric. This more time consuming process ensures that the sewing can be exact.

All welts are cut on the bias to provide the greatest strength and flexibility.

All seams are sewn to ensure that the fabric pattern matches. Seams on stress points are top stitched for added strength.

#5 YKK steel zippers are used in all cushions and back pillows. While this zipper is more expensive, it has proven to be trouble-free during many years of service.

### UPHOLSTERY

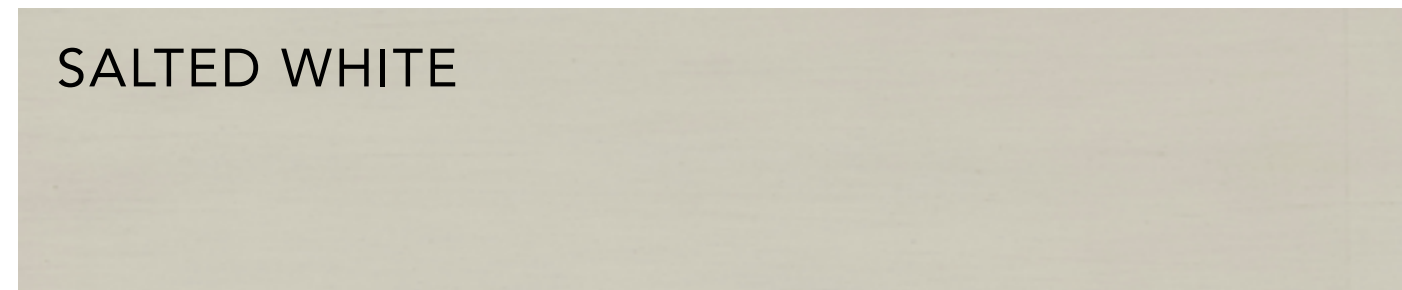
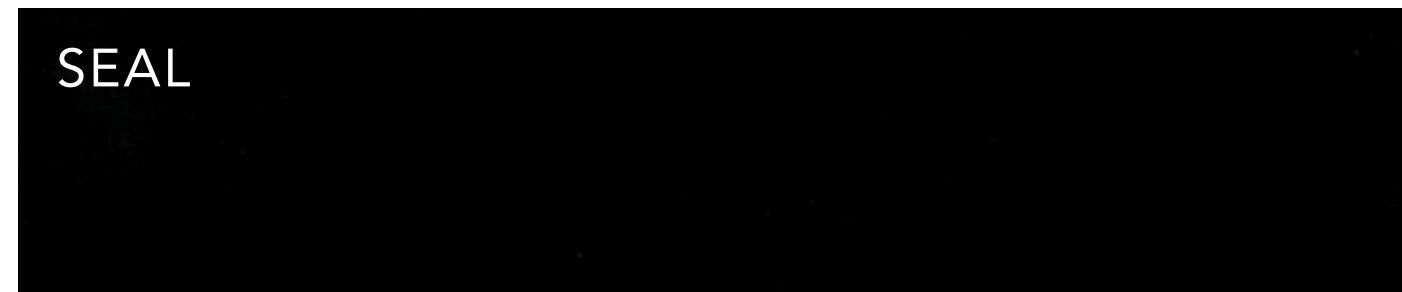
The art of upholstering involves more than simply stapling a fabric to a frame and is more than a list of specifications. It requires finesse - finesse that understands subtleties such as how to hand sew welts together, when an extra layer of cotton is necessary, and where to place a pleat. Below is a partial list of the highest quality upholstery standards which Theodore Alexander always employs.

Over the last 20 years upholstering techniques have evolved away from the use of fibre and toward the use of more foam in order to reduce the amount of labour. While Theodore Alexander uses high quality foam in arms and backs, we remain biased towards the use of generous amounts of fibre batting throughout every piece we produce. These heavier layers of fibre provide a more luxurious feel and look while allowing the upholsterer to shape the arms, deck, and back as demanded by the design. Furthermore, fabric is never applied directly over wood, foam, other fabrics or webbings; there is always a layer of fibre immediately under your fabric. This has the added benefit of reducing the wear on your fabric as fibre batting is not abrasive. (Cotton is no longer used as it smolders and burns, we use fire retardant fibre batting).

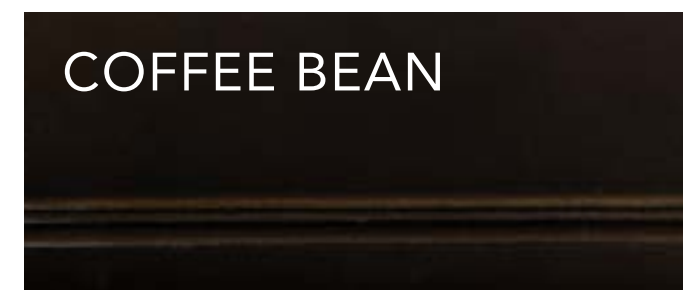
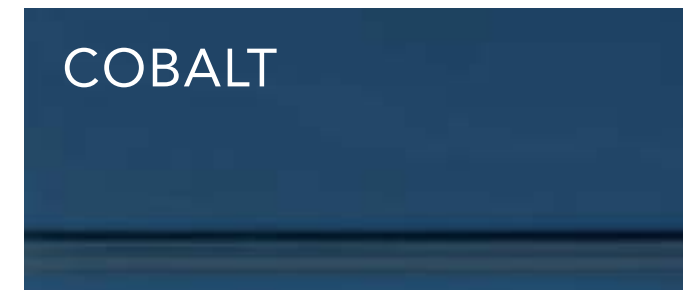
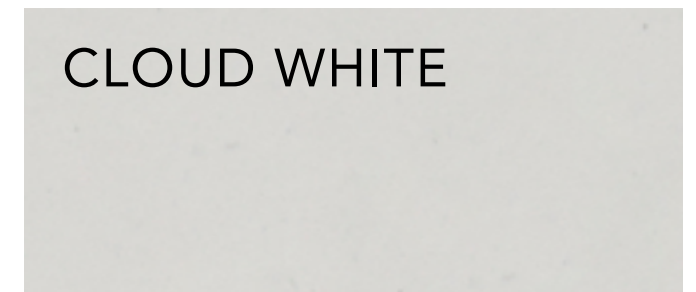
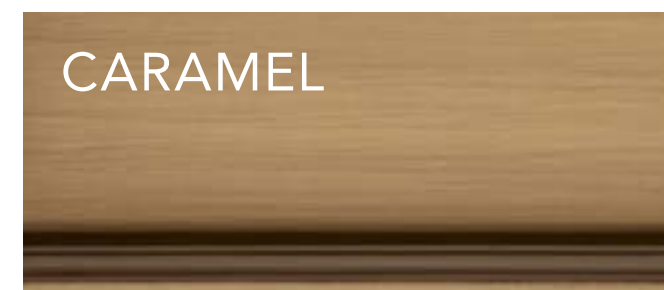
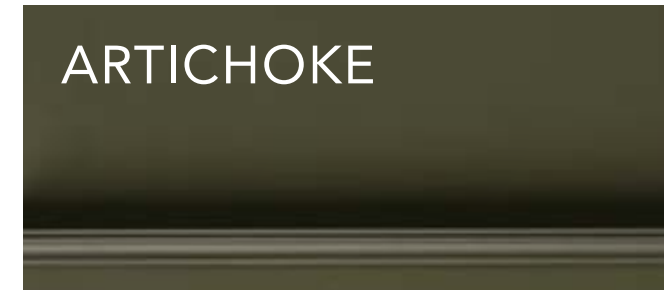
Upholstered backs or tufted designs feature Marshall units (connected small soft coiled springs which are covered in muslin) placed over no sag springs, a layer of foam and two or three layers of fibre. This labour intensive process ensures that even our upholstered and tufted back styles offer support and comfort.

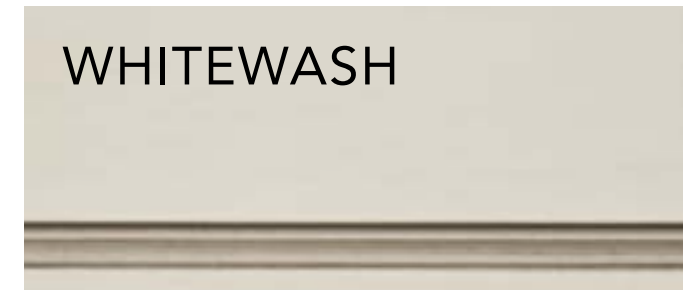
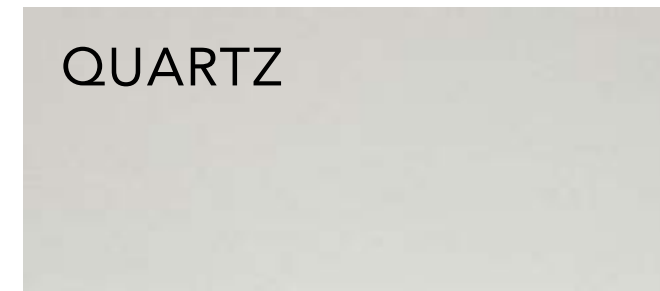
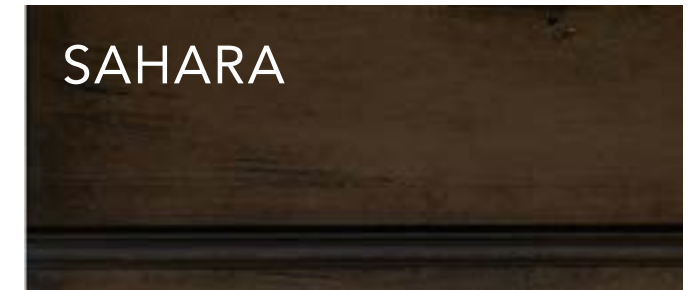
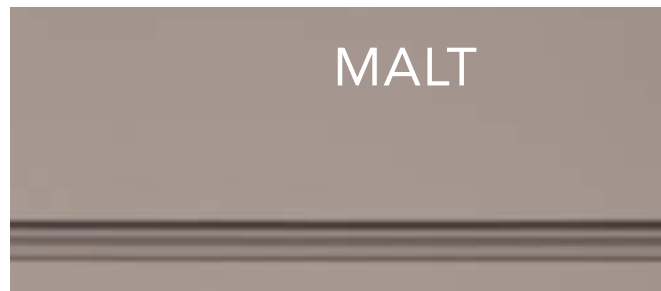
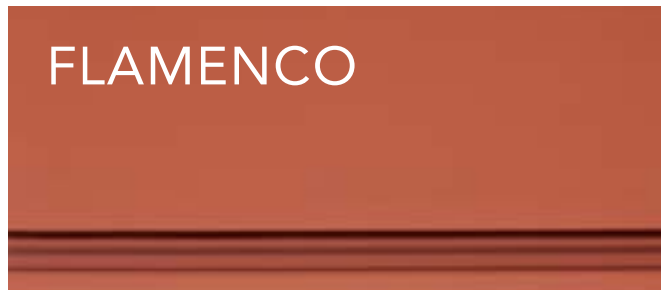
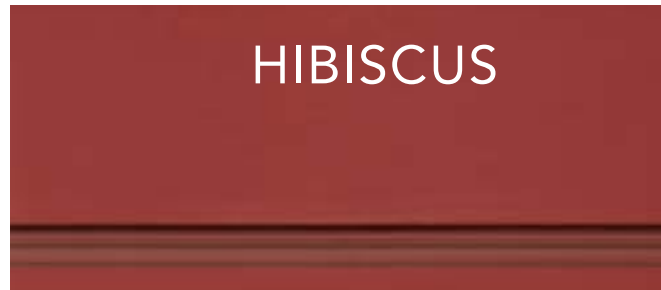
Wherever arms are pleated, a reverse pleat is used so any excess fabric can be removed.

Skirts hang straight and match on all sides. Pellon (stiffener) is sewn into each skirt panel and skirts are lined with sateen. There are no staples or strips visible under the skirt.

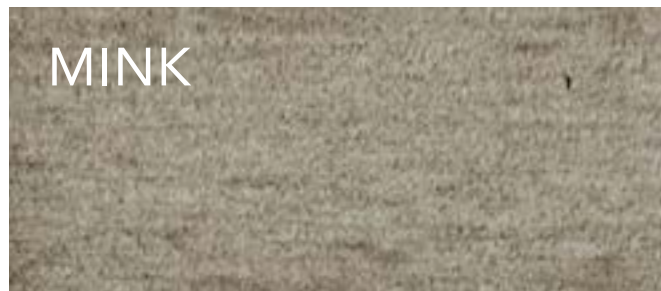
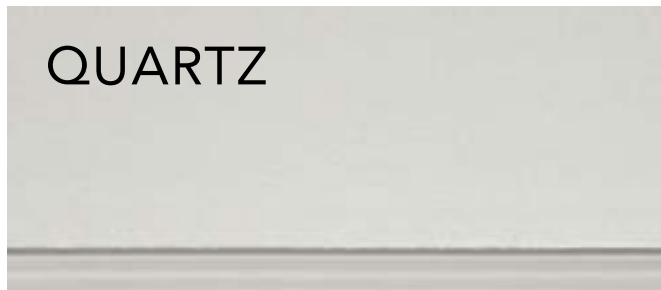
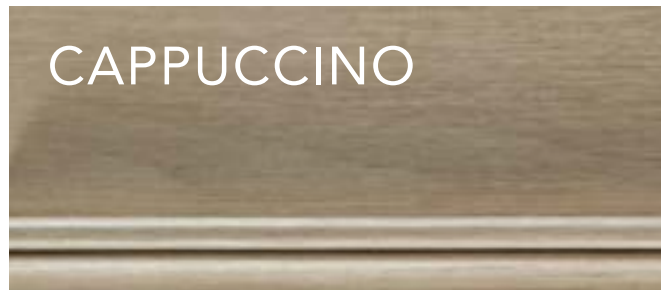


*\*These finishes are only available on Alexa Hampton pieces.*









Don't be shy. Accentuate the shape and color of your new design with gold or silver striping placed to your specification.

SILVER STRIPING

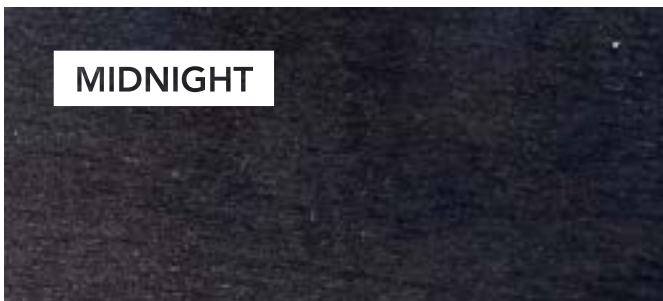
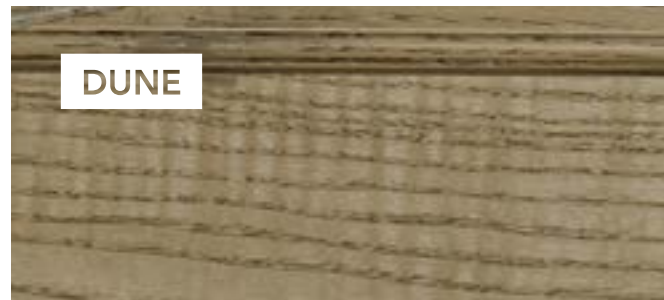


GOLD STRIPING



**FINISHES EXCLUSIVE TO THEODORE ALEXANDER UPHOLSTERY** \_\_\_\_\_ **STANDARD**

Please refer to the price list for finishes available on individual pieces.



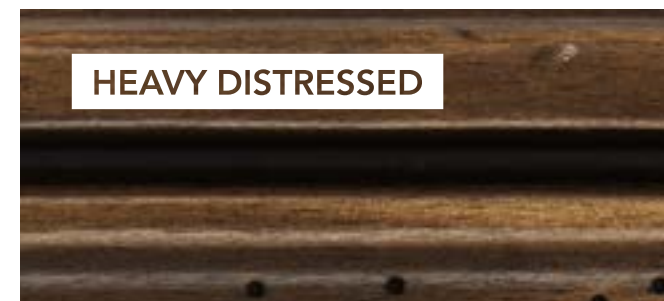
**FINISHES EXCLUSIVE TO THEODORE ALEXANDER UPHOLSTERY** \_\_\_\_\_ **PREMIUM**

Please refer to the price list for finishes available on individual pieces.



**FINISHES EXCLUSIVE TO THEODORE ALEXANDER UPHOLSTERY** \_\_\_\_\_ **DELUXE**

Please refer to the price list for finishes available on individual pieces.



**FINISHES EXCLUSIVE TO THEODORE ALEXANDER UPHOLSTERY** \_\_\_\_\_ **LUXURY**

Please refer to the price list for finishes available on individual pieces.





## ARTIST CREDITS

---

### 1. CELIA ROGGE PHOTOGRAPHY LLC FINE ART PHOTOGRAPHY

**Tel:** +1 (917) 239 4162 | **Tel:** +49 (160) 957 78556

[www.CeliaRogge.com](http://www.CeliaRogge.com)

All photographic images in this email are protected under US and international copyright laws and remain the sole and exclusive property of Celia Rogge. Any unlicensed use or reproduction of images is prohibited.

Page: 8-9, 14-15, 38-39, 41, 47, 51, 56, 60-61, 72, 94, 106,140, 146, 148, 156, 176-177, 185, 189-189, 208

### 2. LUCIA ENGSTROM

**Tel:** +1 (917) 868-1937

[www.luciaengstrom.com](http://www.luciaengstrom.com)

Page: 175

### 3. MASSIMO LISTRI

Via Sant' Agostino, 1 • 50125, Firenze

**Telefono:** +39 055 29 41 28 | **Telefono:** +39 055 26 92 188

**Email:** [massimo@listri.it](mailto:massimo@listri.it)

[www.massimolistri.com](http://www.massimolistri.com)

Page: 18-19

### 4. ELIZABETH FIORE

**ELIZABETH FIORE ART ADVISORY**

**Tel:** +1 (646) 484-6211 | **Fax:** +1 (646) 484-6212

**Email:** [elizabeth@elizabethfiore.com](mailto:elizabeth@elizabethfiore.com) | **Instagram:** [fioreelizabeth](https://www.instagram.com/fioreelizabeth)

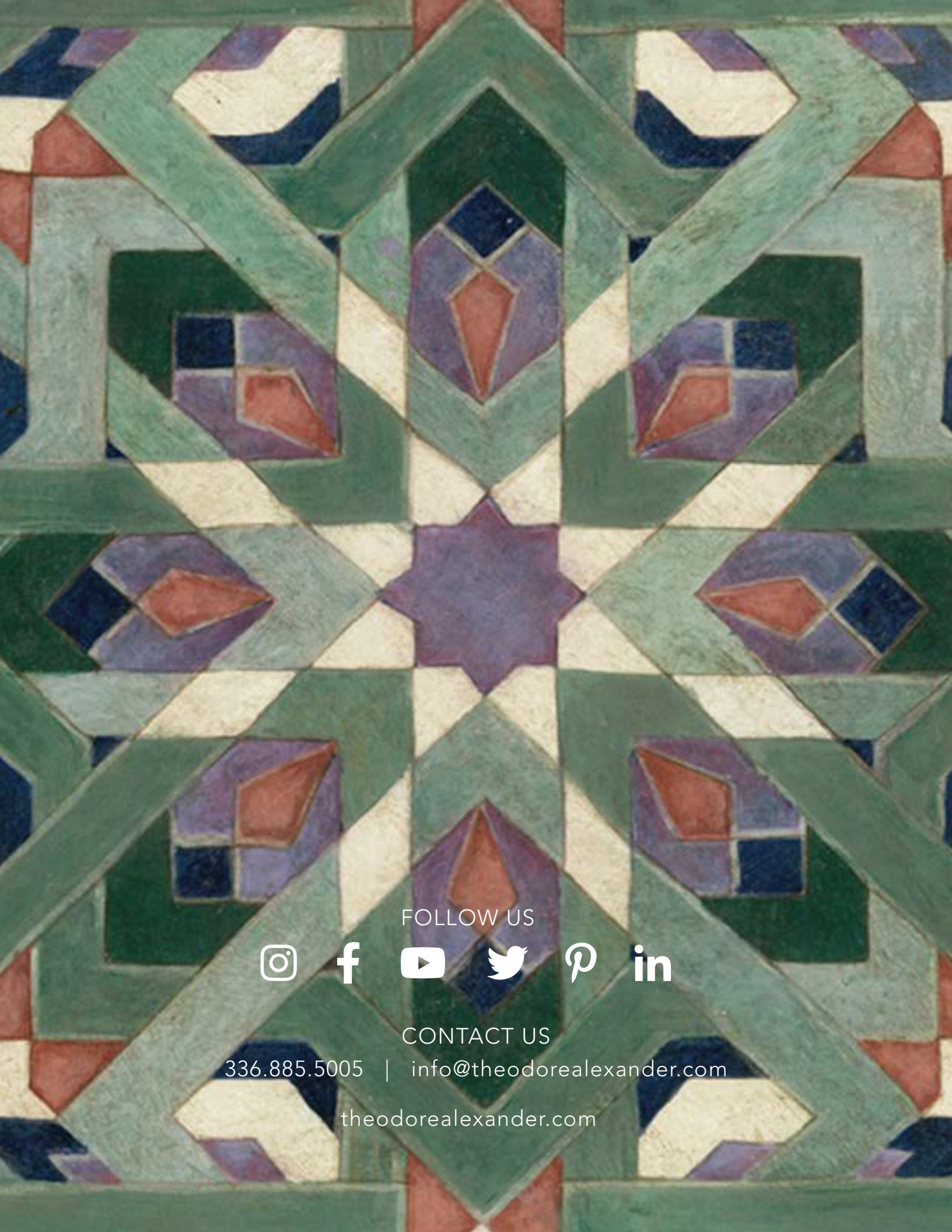
[www.elizabethfiore.com](http://www.elizabethfiore.com)

Elizabeth Hazan, page: 26

Evan Nesbit, page 71, 82, 205

Ellen Cary, page 77, 212





FOLLOW US



CONTACT US

336.885.5005 | [info@theodorealexander.com](mailto:info@theodorealexander.com)

[theodorealexander.com](http://theodorealexander.com)