



EAST HAMPTON

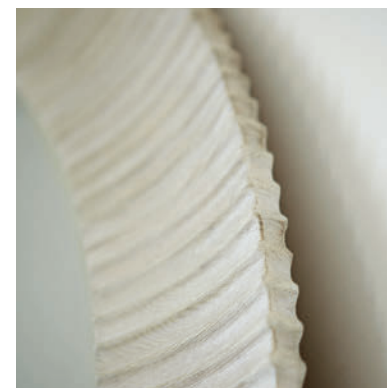




EAST HAMPTON

B E R N H A R D T

On the surface, East Hampton has a minimalist sensibility, but finds subtle sophistication in unique finishes and forms. With roots in classic English furniture design, the collection feels bright and fresh. Light wire brushing and cerusing combine in a soft Cerused Linen finish, enhancing the linear wood grain on quartered ash solids and veneers. Graceful lines, gentle curves and refined proportions merge seamlessly with design details such as reeding, fluting and rounded edges. Silver metal hardware adds a hint of shine with a muted texture. Accents such as metal ferrules and grillwork are used sparingly to highlight artistry and superior craftsmanship. East Hampton has an effortless beauty that never feels too formal or too casual. The collection is livable, but polished and luxurious, finding the perfect balance between celebrated tradition and understated modernity.







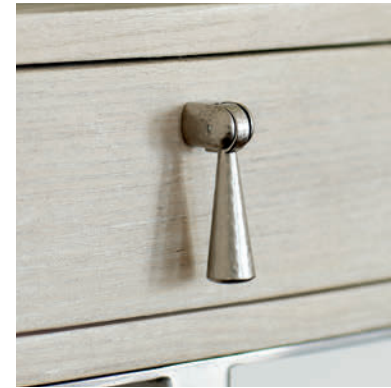
SHOWN:
395-242/395-244 Pedestal Dining Table
395-541 Side Chairs
395-812 Display Curio





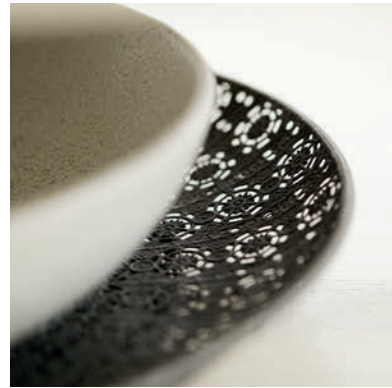
SHOWN:
395-274/395-275 Round Pedestal Dining Table
395-562 Oval Back Arm Chairs
395-561 Oval Back Side Chairs
395-131 Buffet
395-333 Round Mirror
395-115 Hall Chest





SHOWN:
395-910 Demilune Console Table
395-013 Oval Cocktail Table
395-115 Hall Chest
395-860 Entertainment Console
395-121 End Table
212SLO Palazzo Swivel Chair (*Leather 295-010*)
N5712S Camino Swivel Chair (*Body Fabric 1892-002, Pillow 2235-010*)





SHOWN:
 395-013 Oval Cocktail Table
 395-912 Console Table
 212SLO Palazzo Swivel Chair (*Leather 295-010*)
 N4102 Marigot Chair (*Body Fabric 1319-021*)







SHOWN:
395-H66/FR66 Upholstered King Bed
395-216 Oval Nightstand
395-054 Dresser
395-333 Round Mirror



INDEX



395-242 DINING TABLE TOP
395-244 PEDESTAL DINING TABLE BASE (PAIR)

Overall: W 84 (104-124) | D 46 | H 30 in.
Overall: W 213.36 (294.96-314.96) | D 116.84 | H 76.20 cm.

Two 20" leaves. Adjustable glides. Cerused Linen finish.
pages 2, 3, 4, 5



395-274 ROUND DINING TABLE TOP
395-275 PEDESTAL DINING TABLE BASE

Overall Diameter: 54 (74) | H 30 in.
Overall Diameter: 137.16 (187.96) | H 76.20 cm.

One 20" leaf. Cast pedestal with wood base. Recessed adjustable glides.
Cerused Linen finish.
pages Front Cover, 6, 7, Back Cover



395-541 SIDE CHAIR

W 21-3/4 | D 26 | H 41 in.
W 55.25 | D 66.04 | H 104.14 cm.

Seat Height: 19 in. | 48.26 cm.
Seat Depth: 19 in. | 48.26 cm.
Fabric shown: B472
Upholstered box seat and outback with welt. Upholstered inback with buttons and welt.
Cerused Linen finish.
Also available in other fabrics excluding leathers, silks and pillow fabrics; order as 395-X41.
pages 2, 3, 4, 5, 21, Inside Back Cover



395-561 OVAL BACK SIDE CHAIR

W 20-1/2 | D 24-1/2 | H 38-1/2 in.
W 52.07 | D 62.23 | H 97.79 cm.

Seat Height: 19-1/2 in. | 49.53 cm.
Seat Depth: 18-1/2 in. | 46.99 cm.
Fabric shown: B472
Upholstered slip seat, inback and outback with welt. Cerused Linen finish.
Also available in other fabrics excluding leathers, silks and pillow fabrics; order as 395-X61.
pages Front Cover, 6, Back Cover



395-562 OVAL BACK ARM CHAIR

W 24-3/8 | D 24-1/2 | H 38-1/2 in.
W 61.91 | D 62.23 | H 97.79 cm.

Arm Height: 25-11/16 in. | 65.25 cm.
Seat Height: 19-1/2 in. | 49.53 cm.
Seat Depth: 18-1/2 in. | 46.99 cm.
Fabric shown: B472
Upholstered slip seat, inback and outback with welt. Cerused Linen finish.
Also available in other fabrics excluding leathers, silks and pillow fabrics; order as 395-X62.
pages Front Cover, 6, 7, 21, Back Cover



395-131 BUFFET

W 64-5/8 | D 19 | H 35 in.
W 164.15 | D 48.26 | H 88.90 cm.

Bowed case front. Four doors with curved fronts with metal framed overlays in Aged Silver finish.
Behind end doors are two adjustable/removable shelves and one bottom shelf surface. Behind center paired doors is one fixed shelf, one drawer with hand cut-out and silverware insert, and one bottom shelf surface. Metal ferrules. Center leg support. Adjustable glides. Anti-tip kit. Cerused Linen finish.
pages Front Cover, Inside Front Cover, 1, 6, Back Cover



395-812 DISPLAY CURIO

W 34 | D 19 | H 84 in.
W 86.36 | D 48.26 | H 213.36 cm.

Wood-framed, open curved front with three adjustable/removable shelves and one fixed tempered glass shelf with polished edge and plate groove. One fixed bottom shelf surface. Wood back panel. One halogen light with touch dimmer button. Small plinth base. Adjustable glides. Anti-tip kit. Cerused Linen finish. pages Front Cover, 5



395-H66/FR66 UPHOLSTERED BED (KING)

Overall: W 85-7/8 | D 87-1/8 | H 70 in.
Overall: W 218.12 | D 221.30 | H 177.80 cm.

Fabric shown: B472
Slat Height: 7-3/4 in. | 19.69 cm.
Wood-framed headboard with slightly curved ends with inset upholstered panel with button-tufting and welt. Wood-framed footboard with inset button-tufted upholstered panel with welt. Wood veneered side rails. Five slat support system with adjustable supports. Cerused Linen finish. Headboard cannot be used alone. Must be ordered with footboard/side rails. Also available in other fabrics excluding leathers, silks and pillow fabrics; order as 395-XH66/XFR6. pages 16, 17, 18, 19

Also available:
395-H64/FR64 UPHOLSTERED BED (QUEEN)
Overall: W 69-7/8 | D 87-1/8 | H 66 in.
Overall: W 177.48 | D 221.30 | H 167.64 cm.

Also available in other fabrics excluding leathers, silks and pillow fabrics; order as 395-XH64/XFR4.

395-H65/FR65 UPHOLSTERED BED (CALIFORNIA KING)

Overall: W 81-7/8 | D 91-1/8 | H 70 in.
Overall: W 207.96 | D 231.46 | H 177.80 cm.
Also available in other fabrics excluding leathers, silks and pillow fabrics; order as 395-XH65/XFR5.



395-054 DRESSER

W 72-1/4 | D 23-1/4 | H 37 in.
W 183.52 | D 59.06 | H 93.98 cm.

Wood bead around top. Nine drawers. Center drawers have bowed fronts. Metal ferrules - excluding center back legs. Adjustable glides. Anti-tip kit. Cerused Linen finish. page 19



395-216 OVAL NIGHTSTAND

W 30 | D 22 | H 30-3/4 in.
W 76.20 | D 55.88 | H 78.11 cm.

One drawer. Crossed stretchers. Adjustable glides. Anti-tip kit. Cerused Linen finish.
pages 16, 17, 18, 19



395-230 BACHELOR'S CHEST

W 37-1/4 | D 19-1/2 | H 30 in.
W 94.62 | D 49.53 | H 76.20 cm.

Top compartment - open on all sides. Two drawers. Cast beaded drawer fronts and end panels.
Glides. Anti-tip kit. Cerused Linen finish.
Note: Back panel is unfinished.



395-226 NIGHTSTAND

W 36-1/4 | D 20-1/8 | H 29-1/2 in.
W 92.08 | D 51.12 | H 74.93 cm.

Wood beading around top. Three drawers. Metal ferrules. Adjustable glides. Anti-tip kit.
Cerused Linen finish.
page 21



395-118 TALL CHEST

W 46-1/4 | D 21-1/8 | H 44-1/2 in.
W 117.48 | D 53.66 | H 113.03 cm.

Bowed front case with five drawers. Metal ferrules excluding center support leg.
Adjustable glides. Anti-tip kit. Cerused Linen finish.
pages 20, 21



395-229 NIGHTSTAND

W 26 | D 19-1/2 | H 30 in.
W 66.04 | D 49.53 | H 76.20 cm.

Top compartment - open on all sides. Two drawers. Cast beaded drawer fronts and end panels.
Glides. Anti-tip kit. Cerused Linen finish.
Note: Back panel is unfinished.



395-013 OVAL COCKTAIL TABLE

W 56 | D 32 | H 18 in.
W 142.24 | D 81.28 | H 45.72 cm.

One shelf. Four legs with metal ferrules. Adjustable glides. Cerused Linen finish.
pages 8, 9, 11, 12, 13, 14, 20



395-912 CONSOLE TABLE

W 48 | D 15-1/8 | H 34 in.
W 121.92 | D 38.42 | H 86.36 cm.

Three drawers. One shelf. Four legs with metal ferrules. Adjustable glides. Anti-tip kit.
Cerused Linen finish.
Note: Back panel is fully finished.
pages 15, 21



395-121 END TABLE

Diameter: 22 | H 24 in.
Diameter: 55.88 | H 60.96 cm.

Adjustable glides. Cerused Linen finish.
pages 9, 11, 12, 20



395-910 DEMILUNE CONSOLE TABLE

W 55-15/16 | D 16 | H 32 in.
W 142.08 | D 40.64 | H 81.28 cm.

One drawer. Tubular stainless steel base in Aged Silver finish with inset wood shelf.
Adjustable glides. Anti-tip kit. Cerused Linen finish.
page 10



395-115 HALL CHEST

W 40 | D 19-3/16 | H 33-7/16 in.
W 101.60 | D 48.74 | H 84.93 cm.

Three drawers with shaped vertical overlays. Adjustable glides. Anti-tip kit. Cerused Linen finish.
pages 2, 7, 8, 9, 11, 12



395-506 BENCH

W 26 | D 16 | H 20 in.
W 66.04 | D 40.64 | H 50.80 cm.

Fabric shown: B472
Upholstered seat with welt. Wood frame with open arch in center and shaped closed ends.
Cerused Linen finish.
Also available in other fabrics excluding leathers, silks and pillow fabrics; order as 395-X06.
page 17



395-510 DESK

W 52 | D 24 | H 31 in.
W 132.08 | D 60.96 | H 78.74 cm.

Three drawers. Metal ferrules. Adjustable glides. Cerused Linen finish.
page Inside Back Cover



395-333 ROUND MIRROR

Diameter: 43-7/8 | D 2 in.
Diameter: 111.44 | D 5.08 cm.

Cast frame with reeded design. Inset non-beveled mirrored glass. Cerused Linen finish.
Note: Due to weight, must be hung on stud.
pages Front Cover, Inside Front Cover, 1, 6, 19, Back Cover



395-860 ENTERTAINMENT CONSOLE

W 68 | D 19-1/8 | H 34 in.
W 172.72 | D 48.58 | H 86.36 cm.

Four doors with shaped vertical overlays. Behind left pair of doors are two adjustable/removable shelves, one bottom shelf surface, ventilation holes and one grommet hole with cover in back panel. Behind right pair of doors are two adjustable/removable shelves with removable wine bottle holders; each accommodating up to seven standard wine bottles, two stemware racks - each accommodating up to three stems and one drawer with finger pull and wrapped pad. Adjustable glides. Anti-tip kit. Cerused Linen finish.
pages 11, 20, 21, 31



SIGNATURE ELEMENTS



INSPIRATION

East Hampton combines classic forms with unique finishes for a fresh, modern take on tradition. With design roots that are definitively English, the collection is beautiful, but livable, with a stylish, effortless appeal.



ARTISTRY

A clean, modern aesthetic combines with soft finishes, graceful curves and refined proportions. The look is slightly feminine, with lustrous metal details, fluted accents, slender tapered legs and button tufting.



ACCENTS

Metal accents are subtle in East Hampton, adding a hint of shine throughout the collection. Nickel-plated stainless steel in an Aged Silver finish has an understated sophistication that complements the collection's muted hues and casual elegance.



HARDWARE

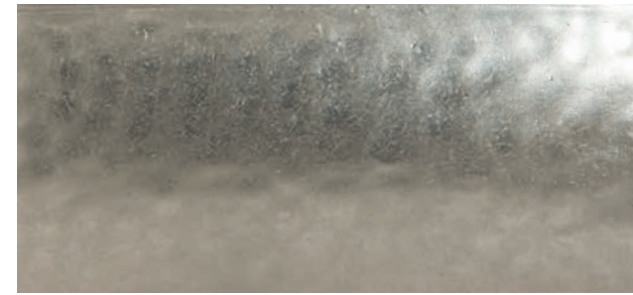
East Hampton's hardware is forged in die-cast nickel-plated zinc with a Vintage Silver finish, shaped in squares or rectangles with a gentle concave form or tapered drop pulls. Light texture adds a delicate luster that blends seamlessly with the collection's refined aesthetic.

FINISHES & MATERIALS

East Hampton features quartered ash solids and veneers in a subtle Cerused Linen finish. Achieved through meticulous craftsmanship, the finish is created using light wire brushing and cerusing techniques to highlight the linear wood grain. Metal accents are used sparingly in a lustrous Aged Silver finish, adding a hint of shine to the collection's clean lines and graceful curves.



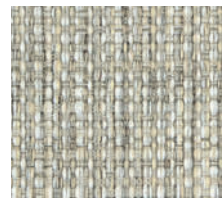
Cerused Linen



Aged Silver

FABRICS

Featured on oval back chairs or with button tufted detailing, East Hampton's muted gray fabric blends seamlessly with the collection's palette of sophisticated neutrals. A subtle weave adds softness and texture, highlighting clean lines, curved shapes and metal detailing.



B472

ADDITIONAL IMAGES FEATURED

COVER: 395-274/395-275 Round Pedestal Dining Table, 395-562 Oval Back Arm Chairs, 395-561 Oval Back Side Chairs, 395-131 Buffet, 395-333 Round Mirror, 395-812 Display Curio.

INSIDE FRONT COVER: 395-131 Buffet, 395-333 Round Mirror.

PAGES 2-3: 395-242/395-244 Pedestal Dining Table, 395-541 Side Chairs, 395-115 Hall Chest.

PAGES 8-9: 395-013 Oval Cocktail Table, 395-115 Hall Chests, 395-121 End Table, B7507 Porter Sofa (*Body Fabric 1391-012, Pillow 1089-014*), N5712S Camino Swivel Chairs (*Body Fabric 1892-002, Pillow 2235-010*).

PAGES 12-13: 395-013 Oval Cocktail Table, 395-121 End Table, 395-115 Hall Chest, N5127 Dylan Sofa (*Body Fabric 1796-002*), N4102 Marigot Chairs (*Body Fabric 1319-021*), 212SLO Palazzo Swivel Chair (*Leather 295-010*).

PAGES 16-17: 395-H66/FR66 Upholstered King Bed, 395-216 Oval Nightstands, 395-506 Benches.

PAGES 20-21: 395-121 End Table, 395-860 Entertainment Console, 395-118 Tall Chest, N9000L Roscoe Ottoman (*Leather 235-010*), 395-013 Oval Cocktail Table, N5712S Camino Swivel Chair (*Body Fabric 1892-002, Pillow 2235-010*), 395-226 Nightstand, 212SLO Palazzo Swivel Chair (*Leather 295-010*), 395-562 Oval Back Arm Chair, 395-912 Console Table, N4102 Marigot Chair (*Body Fabric 1319-021*), 395-541 Side Chair.

INSIDE BACK COVER: 395-510 Desk, 395-541 Side Chair.



Many high quality, natural materials, such as wood, veneer, glass, rubber, metal, plastic, cloth and/or stone, are used in our products and may reflect grain, vein or color variations. These variations are inherent in their species and enhance the unique beauty of each piece of furniture. Due to the photographic and printing processes used in the creation of this catalog, the finish and fabric colors displayed may vary from actual finish and fabric colors. Authorized Bernhardt retailers carry a variety of our furniture pieces and collections, so please contact them about the specific products at their location. Bernhardt uses materials and resources sourced globally to ensure a quality product. Specifications subject to change without notice. Copyright © 2019 Bernhardt Furniture Company. Printed in the USA 03/2019 GVS 5K.

