

B E R N H A R D T

E X T E R I O R S





uniquely beautiful materials.

an elevated aesthetic. intentionally eclectic.
stylish, sophisticated. a fresh look at

outdoor living.

Inspired by the iconic Bernhardt Interiors line, the new Bernhardt Exteriors brand offers a range of luxury outdoor pieces, from sofas, sectionals, accent and swivel chairs to dining tables, dining chairs, occasional tables and more. Characterized by a high level of design and an elevated aesthetic, the collection is created in uniquely beautiful materials, including stone, concrete, terrazzo, gorgeous rattan and woven wicker, rope weaves, cast acrylic and custom finish metals. Each all-weather piece can be used in a full outdoor space, such as a patio, terrace, or deck. Seating groups feature designer performance upholstery, including fabrics by Sunbrella among others. Deep, sumptuous cushions offer unrivaled comfort in a variety of silhouettes, from a track arm group with clean lines to a woven wing group with graceful curves. Sleek dining tables and a selection of dining chairs in chic, modern profiles bring entertaining outdoors with a curated look that feels polished and new. A custom accent pillow program adds a designer element to upholstery, while a diverse group of occasional tables can be configured in ways to reflect each consumer's lifestyle and individuality. Evolving and intentionally eclectic, Bernhardt Exteriors breathes fresh air into exterior furnishings with a stylish, sophisticated approach to outdoor living.









SHOWN:
X01-224 Sanibel Dining Table
X01-543 Sarasota Wicker Side Chairs (*Seat Fabric 6031-002*)





SHOWN:
O8034B Avanni Left Arm Cuddler, O8040B Avanni Armless
Lovseat, O8033B Avanni Right Arm Cuddler (*Body Fabric*
6016-000, *Pillows* 6023-011, 6002-011)
X01-011G/X01-011 Tenerife Square Coco Cocktail Table







INDEX



(side view)

CAPRI SOFA O1007

W 92-1/2 | D 38 | H 25-1/2 in.
S/H 19 | A/H 26 | S/D 22 in.

Fabric Shown: 6031-002
Leg Finish: Raven

Material: Large Weave Endura Wicker
Material Finish: Rockport Gray



(side view)

CAPTIVA SOFA O1107

W 88 | D 40 | H 38 in.
S/H 17 | A/H 22 | S/D 22 in.

Fabric Shown: 6031-002
Base Finish: Graphite

Material: Herringbone Weave Endura Wicker
Material Finish: Pewter Gray



CAPRI CHAIR O1002

W 41 | D 38 | H 25-1/2 in.
S/H 19 | A/H 26 | S/D 22 in.



CAPRI OTTOMAN O1001

W 41 | D 29 | H 17 in.



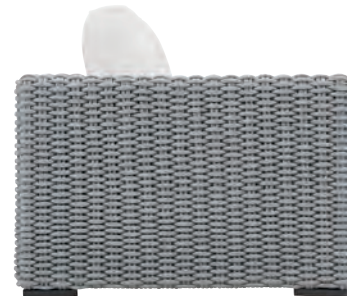
CAPTIVA CHAIR 1/2 O1103

W 46-1/2 | D 40 | H 39 in.
S/H 17 | A/H 22 | S/D 22 in.



CAPTIVA SWIVEL CHAIR O1102S

W 33 | D 30 | H 40 in.
S/H 17 | A/H 22 | S/D 22 in.



(side view)

CAPRI SOFA O1017

W 92-1/2 | D 38 | H 25-1/2 in.
S/H 19 | A/H 26 | S/D 22 in.

Fabric Shown: 6031-002
Leg Finish: Raven

Material: Rope
Material Finish: Mist Gray



CAPTIVA WING CHAIR O1102

W 33 | D 30 | H 40 in.
S/H 17 | A/H 22 | S/D 22 in.



CAPTIVA LARGE OTTOMAN O1100

W 40 | D 28 | H 18 in.



CAPTIVA OTTOMAN O1101

W 33 | D 23 | H 17 in.



CAPRI CHAIR O1012

W 41 | D 38 | H 25-1/2 in.
S/H 19 | A/H 26 | S/D 22 in.



CAPRI OTTOMAN O1011

W 41 | D 29 | H 17 in.



(side view)

MONTEREY SOFA 04817

W 90 | D 42 | H 32-1/2 in.
S/H 16-1/2 | A/H 24-1/2 | S/D 30-1/2 in.

Fabric Shown: 6016-000
Leg Finish: Brushed Aluminum with clear powder coat



MONTEREY CHAIR 1/2 04813

W 40 | D 42 | H 32-1/2 in.
S/H 16-1/2 | A/H 24-1/2 | S/D 30-1/2 in.



MONTEREY SWIVEL CHAIR 04812S

W 36 | D 38 | H 32-1/2 in.
S/H 16-1/2 | A/H 24-1/2 | S/D 26-1/2 in.



MONTEREY OTTOMAN 04811

W 32-1/2 | D 23-1/2 | H 16-1/2 in.



(side view)

TAYLOR SOFA 07417

W 87-1/2 | D 38-1/2 | H 29 in.
S/H 17-1/2 | A/H 29 | S/D 31-1/2 in.

Fabric Shown: 6016-000
Pillow Fabric Shown: 6002-000
Leg Finish: Brushed Aluminum with clear powder coat





AVANNI SECTIONAL (5-PIECE)

Group W 166-1/2 | D 41-1/2 | H 31-1/2 in.
SH 15 | AH 27-1/2 | SD 30-1/2 in.

Pieces Shown: O8034 Left Arm Cuddler, O8040 Armless Loveseat, O8032 Corner Chair, O8030 Armless Chair, O8041 Right Arm Loveseat
These frames are not stand-alone items.

Fabric Shown: 6016-000
Leg Finish: Aluminum with clear powder coat

Also available in Matte Black leg finish:
Left Arm Loveseat O8042B, Right Arm Loveseat O8041B, Left Arm Cuddler O8034B, Right Arm Cuddler O8033B, Armless Loveseat O8040B, Corner Chair O8032B, Armless Chair O8030B, Ottoman O8031B



LEFT ARM LOVESEAT O8042

W 65-1/2 | D 41-1/2 | H 31-1/2 in.



RIGHT ARM LOVESEAT O8041

W 65-1/2 | D 41-1/2 | H 31-1/2 in.



LEFT ARM CUDDLER O8034

W 63 | D 41-1/2 | H 31-1/2 in.



RIGHT ARM CUDDLER O8033

W 63 | D 41-1/2 | H 31-1/2 in.



ARMLESS LOVESEAT O8040

W 62 | D 41-1/2 | H 31-1/2 in.



CORNER CHAIR O8032

W 41-1/2 | D 41-1/2 | H 31-1/2 in.



ARMLESS CHAIR O8030

W 31 | D 41-1/2 | H 31-1/2 in.



OTTOMAN O8031

W 41-1/2 | D 41-1/2 | H 16-1/2 in.

These frames are not stand-alone items.



MONTEREY SECTIONAL (2-PIECE)

Group W 101 | D 64 | H 32-1/2 in.
SH 16-1/2 | AH 24-1/2 | SD 55-1/2 in.

Pieces Shown: O4842 Left Arm Loveseat, O4837 Right Arm Chaise
These frames are not stand-alone items.

Fabric Shown: 6016-000
Leg Finish: Brushed Aluminum with clear powder coat



LEFT ARM LOVESEAT O4842

W 65-1/2 | D 42 | H 32-1/2 in.



RIGHT ARM LOVESEAT O4841

W 65-1/2 | D 42 | H 32-1/2 in.



LEFT ARM CHAISE O4838

W 35-1/2 | D 64 | H 32-1/2 in.



RIGHT ARM CHAISE O4837

W 35-1/2 | D 64 | H 32-1/2 in.

These frames are not stand-alone items.



AVENTURA SWIVEL CHAIR O1745S

W 35 | D 32-1/2 | H 31-1/2 in.
S/H 18 | A/H 23-1/2 | S/D 22-1/2 in.
Fabric Shown: 6031-002
Base Finish: Gray Powder Coat



BALI SWIVEL CHAIR O2012S

W 33 | D 33 | H 37 in.
S/H 19 | A/H 31 | S/D 21 in.
Fabric Shown: 6031-002
Material: Split Cane Endura Wicker
Material Finish: Peppercorn
Base Finish: Dove Gray



NEWPORT SWIVEL CHAIR O2002S

W 38-1/2 | D 29-1/2 | H 31-1/2 in.
S/H 18 | A/H 27 | S/D 18 in.
Fabric Shown: 6031-002
Material: Small Weave Endura Wicker
Material Finish: Rockport Gray
Base Finish: Lava



NEWPORT SWIVEL CHAIR O2003S

W 38-1/2 | D 29-1/2 | H 31-1/2 in.
S/H 18 | A/H 27 | S/D 18 in.
Fabric Shown: 6031-002
Material: Flat Rope Weave
Material Finish: Gray Flannel
Base Finish: Lava



BALI SWIVEL CHAIR O2023S

W 33 | D 33 | H 37 in.
S/H 19 | A/H 31 | S/D 21 in.
Fabric Shown: 6031-002
Material: Flat Rope Weave
Material Finish: Gray Flannel
Base Finish: Lava



CORONADO CHAIR O2202

W 32 | D 31-1/2 | H 29 in.
S/H 18-1/2 | A/H 25-1/2 | S/D 23 in.
Fabric Shown: 6031-002
Base Finish: Gray Powder Coat



PLAYA CHAIR O4222

W 30 | D 38 | H 30-1/2 in.
S/H 15-1/2 | S/D 20-1/2 in.
Material: Mahogany
Material Finish: Ash



WAILEA SWIVEL CHAIR O2013S

W 36-1/2 | D 30-1/2 | H 33-1/2 in.
S/H 19 | A/H 32-1/2 | S/D 18 in.
Fabric Shown: 6031-002
Material: Sock Weave
Material Finish: Nordic Gray
Base Finish: Oyster



EXUMA CHAIR O6823

W 27 | D 31-1/2 | H 31 in.
S/H 17 | A/H 24 | S/D 21 in.
Fabric Shown: 6031-002
Leg Finish: Powder Coated
Stainless Steel



NAPLES CHAIR O5112

W 28 | D 25-1/2 | H 29-1/2 in.
S/H 20-1/2 | A/H 29-1/2 | S/D 24-1/2 in.
Fabric Shown: 6031-002
Material: Cast Aluminum
Material Finish: Clear Powder Coat

ACCENT PILLOWS

These pillows are available for special order using any Bernhardt Exteriors fabric.



Square Box Border w/ Picture Frame Tape & Cord

SKU# ODP20 | Size: 20" x 20"
SKU# ODP22 | Size: 22" x 22"



Kidney w/ Center Tape & Welt

SKU# OKP25 | Size: 12" x 22"
SKU# OKP26 | Size: 14" x 23"



Square Knife Edge w/ Welt

SKU# OPW20 | Size: 20" x 20"
SKU# OPW21 | Size: 21" x 21"
SKU# OPW22 | Size: 22" x 22"
SKU# OPW23 | Size: 23" x 23"
SKU# OPW24 | Size: 24" x 25"
SKU# OPW26 | Size: 26" x 26"



Square Knife Edge w/ Triangle

SKU# OTP20 | Size: 20" x 20"
SKU# OTP21 | Size: 21" x 21"
SKU# OTP22 | Size: 22" x 22"
SKU# OTP23 | Size: 23" x 23"
SKU# OTP24 | Size: 24" x 25"
SKU# OTP26 | Size: 26" x 26"



Square Knife Edge w/ Flag

SKU# OFP20 | Size: 20" x 20"
SKU# OFP21 | Size: 21" x 21"
SKU# OFP22 | Size: 22" x 22"
SKU# OFP23 | Size: 23" x 23"
SKU# OFP24 | Size: 24" x 25"
SKU# OFP26 | Size: 26" x 26"





AVENTURA RECTANGULAR ACRYLIC COCKTAIL TABLE X01-023

W 55-1/8 | D 27-9/16 | H 17-1/16 in.
W 140.02 | D 70.01 | H 43.34 cm.

Materials/Finishes: Polished acrylic top with cast wood grain pattern.
Base and stretchers in grade 316 stainless steel.



AVENTURA SQUARE ACRYLIC END TABLE X01-103

W 24 | D 24 | H 24 in.
W 60.96 | D 60.96 | H 60.96 cm.

Materials/Finishes: Polished acrylic top with cast wood grain pattern.
Base and stretchers in grade 316 stainless steel.



MIRAMAR ROUND COCKTAIL TABLE X01-025

Diameter 35-7/16 | H 18-1/8 in.
Diameter 90.01 | H 46.04 cm.

Materials/Finishes: Textured/patterned glass reinforced concrete in Dark Charcoal finish with PU top coat.



MIRAMAR DRUM END TABLE X01-124

Diameter 19-11/16 | H 19-7/8 in.
Diameter 50.01 | 50.48 cm.

Materials/Finishes: Textured/patterned glass reinforced concrete in Dark Charcoal finish with PU top coat.



ENCINITAS COCKTAIL TABLE X01-027

Diameter 35-1/2 | H 16 in.
Diameter 90.17 | H 40.64 cm.

Materials/Finishes: Terrazzo stone with PU top coat.



ENCINITAS ROUND END TABLE X01-127

Diameter 20-1/16 | H 20-1/16 in.
Diameter 50.96 | H 50.96 cm.

Materials/Finishes: Terrazzo stone with PU top coat.



PACIFICA ROUND COCKTAIL TABLE X01-014

Diameter 36 | H 18 in.
Diameter 91.44 | H 45.72 cm.

Materials/Finishes: Hand laid Grey Mist stone with PU top coat.



PACIFICA ROUND SIDE TABLE X01-164

Diameter 15-3/4 | H 19-7/8 in.
Diameter 40.01 | 50.48 cm.

Materials/Finishes: Hand laid Grey Mist stone with PU top coat.



KAI ROUND COCKTAIL TABLE X01-028

Diameter 36 | H 16 in.
Diameter 91.44 | H 40.64 cm.

Materials/Finishes: Natural stonecast with PU top coat in White finish with rattan texture.



KAI SIDE TABLE X01-157

W 14-9/16 | D 14-3/8 | H 18 in.
W 36.99 | D 36.51 | H 45.72 cm.

Materials/Finishes: Natural stonecast with PU top coat in White finish with rattan texture.



STILLWATER LARGE COCKTAIL TABLE X01-010

W 31-1/8 | D 23-1/4 | H 16-3/4 in.
W 79.06 | D 59.06 | H 42.55 cm.

Materials/Finishes: Terrazzo stone top. Stainless steel base in Flint Gray finish.



STILLWATER SMALL COCKTAIL TABLE X01-009

W 22-1/4 | D 22-1/4 | H 19-1/2 in.
W 56.52 | D 56.52 | H 49.53 cm.

Materials/Finishes: Terrazzo stone top. Stainless steel base in Flint Gray finish.



TENERIFE SQUARE COCO COCKTAIL TABLE X01-011G/X01-011

W 42 | D 42 | H 18 in.
W 106.68 | D 106.68 | H 45.72 cm.

Materials/Finishes: Lay-on tempered glass top with polished edge. Natural stonecast with PU top coat in White finish with coco twig pattern on top and sides.

Also available:
Cube End Table X01-111G/X01-111



TENERIFE COCO TWIG CUBE END TABLE X01-111/X01-111G

Overall Diameter 24 | H 24 in.
Overall Diameter 60.96 | H 60.96 cm.

Materials/Finishes: Lay-on tempered glass top with polished edge. Natural stonecast with PU top coat in White finish with coco twig pattern on top and sides.

Also available:
Square Cocktail Table X01-011G/X01-011



MILLIM BUNCHING TABLE X01-154

W 14 | D 14 | H 18 in.
W 35.56 | D 35.56 | H 45.72 cm.

Materials/Finishes: Natural stonecast with PU top coat in White finish with concave shaped sides.



MONTANA SIDE TABLE X01-159

W 17 | D 17 | H 24-1/8 in.
W 43.18 | D 43.18 | H 61.28 cm.

Materials/Finishes: Laminated stone top with PU top coat in contrasting Snow and Gray stone in geometric pattern. Polished stainless steel tubular base.



MARISOL ROUND COCKTAIL TABLE X01-024

Diameter 29-15/16 | H 20-1/4 in.
Diameter 76.04 | H 51.44 cm.

Materials/Finishes: Cast concrete top in Brownstone finish with stainless steel pedestal base in Flint Gray finish.



ANSON SIDE TABLE X01-163

Diameter 14 | H 19-1/4 in.
Diameter 35.56 | H 48.90 cm.

Materials/Finishes: Natural stonecast with PU top coat in White finish with rattan texture. Powder-coated stainless steel band around plinth base.



SANDMERE DRINK TABLE X01-171

Diameter 16 | H 21-7/8 in.
Diameter 40.64 | H 55.56 cm.

Materials/Finishes: Textured natural stonecast finish with PU top coat.



SASHA SIDE TABLE X01-150

Diameter 15-11/16 | H 19-13/16 in.
Diameter 39.85 | 50.32 cm.

Materials/Finishes: Natural stonecast with PU top coat in White finish with rattan texture.



GRENADA ROUND DRINK TABLE X01-170

Diameter 15 | H 18 in.
Diameter 38.10 | H 45.72 cm.

Materials/Finishes: Textured natural stonecast with PU top coat.



MAYA ROUND ACCENT TABLE X01-123

Diameter 14-9/16 | H 16-1/8 in.
Diameter 36.99 | 40.96 cm.

Materials/Finishes: Glass reinforced concrete in Black finish with silver highlights. PU top coat.



SAUSALITO SIDE TABLE X01-107

W 12-1/2 | D 20-3/8 | H 26 in.
W 31.75 | D 51.75 | H 66.04 cm.

Materials/Finishes: Terrazzo stone top with PU top coat. Stainless steel base in Flint Gray finish.



CEDAR KEY DINING TABLE X01-221T

W 88 | D 39 | H 29-5/8 in.
W 223.52 | D 99.06 | H 75.25 cm.

Materials/Finishes: Teak wood top with PU top coat in Weathered Teak finish. Powder-coated aluminum legs in Charcoal finish.



DEL MAR DINING TABLE X01-271/X01-273

Overall Diameter 54 | H 30 in.
Overall Diameter 137.16 | H 76.20 cm.

Materials/Finishes: Cast concrete top in Bone finish with PU top coat. Powder-coated tubular stainless steel base in Flint Gray finish.



SANIBEL DINING TABLE X01-224

W 70-7/8 | D 35-3/8 | H 30 in.
SH 180.02 | AH 89.85 | SD 76.20 in.

Materials/Finishes: Terrazzo top with PU top coat. Powder-coated stainless steel base in Flint Gray finish.



ANTILLES ROPE ARM CHAIR X01-561R

W 23-1/2 | D 26-1/4 | H 38 in.
S/H 20 | S/D 19-1/4 | A/H 24 in.

Fabric Shown: 6031-002
Material: Flat Rope Weave
Material Finish: Gray Flannel
Leg Finish: Lava



ANTILLES WICKER ARM CHAIR X01-561W

W 23-1/2 | D 26-1/4 | H 38 in.
S/H 20 | S/D 19-1/4 | A/H 24 in.

Fabric Shown: 6031-002
Material: Open Weave Endura Wicker
Material Finish: Tobacco Leaf
Leg Finish: Silver Mist



BELLAIR DINING CHAIR X01-502

W 25 | D 28 | H 42-1/8 in.
S/H 19-3/4 | S/D 19-1/2 in.

Fabric Shown: 6031-002



SARASOTA WICKER SIDE CHAIR X01-543

W 21-3/4 | D 25-1/16 | H 39-3/8 in.
S/H 19-1/4 | S/D 20 in.

Fabric Shown: 6031-002
Material: Herringbone Weave Endura Wicker
Material Finish: Pewter Gray
Leg Finish: Graphite

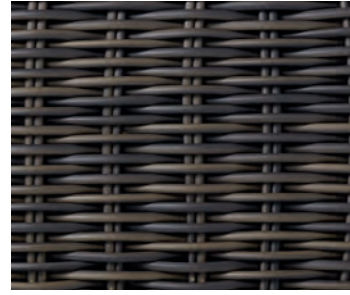
MATERIALS



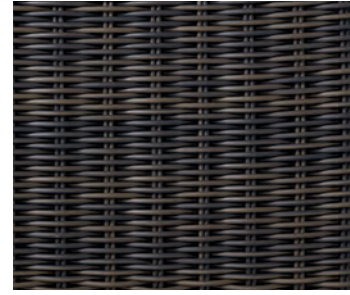
Material: Rope
Material Finish: Gray Mist



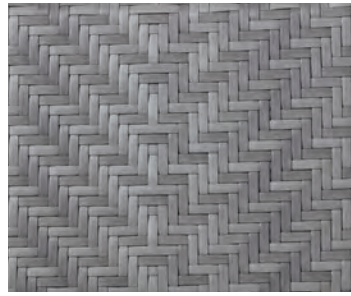
Material: Flat Rope Weave
Material Finish: Gray Flannel



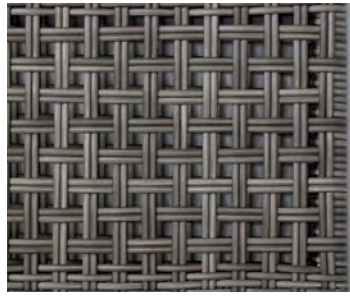
Material: Large Weave Endura Wicker
Material Finish: Rockport Gray



Material: Small Weave Endura Wicker
Material Finish: Rockport Gray



Material: Herringbone Weave
Endura Wicker
Material Finish: Pewter Gray



Material: Open Weave Endura Wicker
Material Finish: Tobacco Leaf



Material: Split Cane Endura Wicker
Material Finish: Peppercorn

ADDITIONAL IMAGES FEATURED

COVER: O1103 Captiva Chairs 1/2 (*Body Fabric & Pillows 6031-002*), O1100 Captiva Large Ottomans (*Body Fabric 6031-002*), X01-157 Kai Side Tables.

INSIDE FRONT COVER: X01-271/X01-273 Del Mar Dining Table, X01-561W Antilles Wicker Arm Chairs (*Seat Fabric 6031-002*).

PAGES 2-3: X01-271/X01-273 Del Mar Dining Table, X01-561W Antilles Wicker Arm Chairs (*Seat Fabric 6031-002*).

PAGES 4-5: O1007 Capri Sofa (*Body Fabric 6031-002*), O1002 Capri Chair (*Body Fabric 6031-002*), X01-010 Stillwater Large Cocktail Tables, X01-009 Stillwater Small Cocktail Table.

PAGES 6-7: O1107 Captiva Sofa (*Body Fabric & Pillows 6031-002*), O1102 Captiva Wing Chairs (*Body Fabric & Pillows 6031-002*), X01-028 Kai Round Cocktail Table.

PAGES 10-11: O1103 Captiva Chairs 1/2 (*Body Fabric & Pillows 6031-002*), O1100 Captiva Large Ottomans (*Body Fabric 6031-002*), X01-157 Kai Side Tables.

PAGES 14-15: O4222 Playa Chairs, X01-154 Millim Bunching Table.

PAGES 16-17: O1017 Capri Sofa (*Body Fabric 6031-002*), O1012 Capri Chairs (*Body Fabric 6031-002*), X01-010 Stillwater Large Cocktail Tables, X01-009 Stillwater Small Cocktail Tables.

PAGES 18-19: X01-561R Antilles Rope Arm Chairs (*Seat Fabric 6031-002*), X01-221T Cedar Key Dining Table, O4817 Monterey Sofa (*Body Fabric 6008-011, Pillows 6024-021, 6015-012, Welt 6008-011*), X01-011G/X01-011 Tenerife Square Coco Cocktail Table, O4222 Playa Chair, X01-154 Millim Bunching Table, X01-224 Sanibel Dining Table, X01-543 Sarasota Wicker Side Chairs (*Seat Fabric 6031-002*), X01-271/X01-273 Del Mar Dining Table, X01-561W Antilles Wicker Arm Chairs (*Seat Fabric 6031-002*), O1103 Captiva Chair 1/2 (*Body Fabric & Pillows 6031-002*), O1100 Captiva Large Ottoman (*Body Fabric 6031-002*), X01-154 Millim Bunching Table, O1102S Captiva Swivel Chairs (*Body Fabric & Pillows 6031-002*), X01-157 Kai Side Table, X01-028 Kai Round Cocktail Table, O2023S Bali Swivel Chair (*Body Fabric 6031-002*), X01-150 Sasha Side Table.

PAGE 23: O4817 Monterey Sofa (*Body Fabric 6008-011, Pillows 6024-021, 6015-012, Welt 6008-011*), X01-011G/X01-011 Tenerife Square Coco Cocktail Table.

PAGE 29: O2013S Wailea Swivel Chairs (*Body Fabric 6031-002*), X01-163 Anson Side Table.

INSIDE BACK COVER: O2023S Bali Swivel Chairs (*Body Fabric 6031-002*), X01-150 Sasha Side Table.



Many high quality, natural materials, such as wood, veneer, glass, rubber, metal, plastic, cloth and/or stone, are used in our products and may reflect grain, vein or color variations. These variations are inherent in their species and enhance the unique beauty of each piece of furniture. Due to the photographic and printing processes used in the creation of this catalog, the finish and fabric colors displayed may vary from actual finish and fabric colors. Authorized Bernhardt retailers carry a variety of our furniture pieces and collections, so please contact them about the specific products at their location. Bernhardt uses materials and resources sourced globally to ensure a quality product. Specifications subject to change without notice. Copyright © 2020 Bernhardt Furniture Company. Printed in the USA 03/2020 GVS 4K.



