

THEODORE ALEXANDER



IN-STOCK CATALOG

CLASSIC



Table of Contents

ALEXA HAMPTON	5
ALTHORP	27
DORCHESTER by STEPHEN CHURCH	47
THE ENGLISH CABINET MAKER	59
SLOANE by STEPHEN CHURCH	67
STEPHEN CHURCH	81
TA ORIGINALS	97

THEODORE ALEXANDER

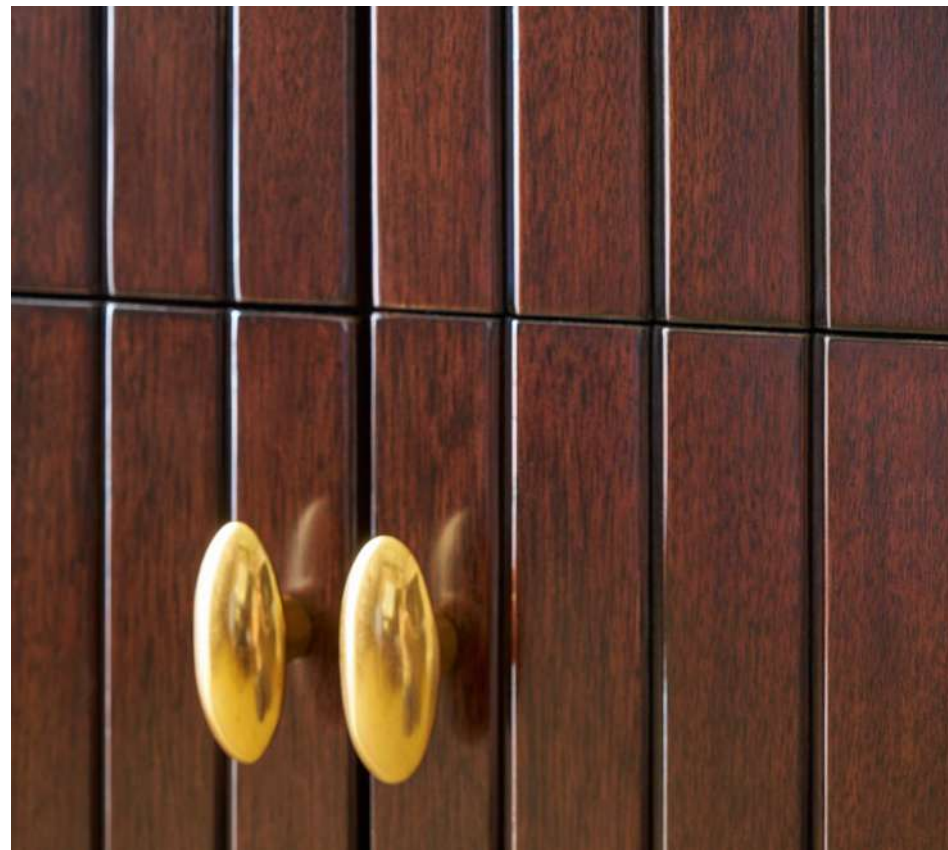
Theodorealexander.com

THEODORE ALEXANDER



Alexa Hampton

"I think designers and entrepreneurs have much in common. My work in design and as an entrepreneur overlap because both are focused on filling the needs of the client. I strive to create beautiful living spaces that express the lifestyle of those residing within them. While many say that form and function are separate entities, in my mind, they are fundamentally linked. Purpose is the cornerstone of ultimate luxury. I endeavor to design products that are both beautiful and useful. What could be better?"



The Alexa Hampton Collection

From New York City to Hangzhou, China, Alexa Hampton's project portfolio encompasses luxe, beautifully layered urban apartments, expansive town and country residences, private airplanes, and yachts. Regularly named to Architectural Digest's AD100 and House Beautiful's Top Designer list as well as Elle Décor's A-List, Hampton translates the classical principles of good design and decoration into some of today's most elegant, enduring, and functional domestic landscapes.



AXH50036
Maurice Side Table

The Maurice Side Table by Alexa Hampton is crafted from Rift Oak in our Frank finish and Khaya in Cambridge finish on the sides. Finger joint detailing along the top adds a contemporary twist to the classic lines of this piece. Compliments the Maurice Cocktail Table.

30 x 20 x 28 in | 76.2 x 50.8 x 71.1 cm



AXH51018
Maurice Cocktail Table

The Maurice Cocktail Table by Alexa Hampton is crafted from Rift Oak in our Frank finish and Khaya in Cambridge finish on the sides. Finger joint detailing along the top adds a contemporary twist to the classic lines of this piece. Compliments the Maurice Side Table.

48 x 32 x 18 in | 121.9 x 81.3 x 45.7 cm



AXH50038
James Side Table

The James Side Table by Alexa Hampton takes a new twist on classic design. Mahogany, in our Cambridge finish, is complemented by an inset Crema Marfil stone top set upon baroque turned legs.

24 x 24 x 26 in | 61 x 61 x 66 cm



AXH51022
James Cocktail Table

The James Cocktail Table by Alexa Hampton takes a new twist on classic design. Mahogany, in our Cambridge finish, is complemented by an inset Crema Marfil stone top set upon baroque turned legs.

54 x 32 x 18 in | 137.2 x 81.3 x 45.7 cm





AXH50001.C105
Blix Side Table

The Blix side table is a colonial flavored piece with a nod to Anglo-Indian furniture flavors. A framework of spiral turned and tapered legs supports two frieze drawers below a reeded rectangular top. Two caned shelves for stylish storage and display.

28 x 21 x 28 in | 71.12 x 53.34 x 71.12 cm



AXH51007.C109
Cristina Cocktail Table

Boldly proportioned and conceived, the Cristina cocktail table's square frame acts as an anchor. The perimeter and legs of the coffee table are set in a faux-bamboo frame. Brushed and textured veneered top.

48 x 48 x 18 in | 121.92 x 121.92 x 45.72 cm



AXH52003.C105
Antonio Game Table

While Antonio's DNA is all 1930's Italian, this sleek modern game table translates perfectly in today's homes. The gilt-tooled leather top is ready for play, with pivoting hinged drawers on the frieze. All supported on bold square legs and set on tapered brass cappings.

39½ x 39½ x 29½ in | 100.3 x 100.3 x 74.9 cm



AXH55002.C105
Hailey Dining / Center Table

The perfect petit dining room table or essential entryway table- the choice is yours. The round sunburst table top is figured in Mahogany veneer with a reeded edge outlined in Hampton brass. The down-swept monolithic table pedestal is supported by a Cavetto molded base detailed with brass nailheads.

48 x 48 x 30 in | 121.92 x 121.92 x 76.2 cm



AXH52004.C157
Sargent Game Table

Based on a French tric-trac table, Sargent is a winning writing table or gaming table. Reversible desktop panel sports a backgammon and chess/checker board with counter well. Chevron corners with two drawers at the paneled frieze. Tapering legs with brass moldings and cappings. Mahogany and Mahogany veneer.

44 x 23 x 29 in | 111.76 x 58.42 x 73.66 cm



AXH53007.C159
Celia Console Table

Alexa Hampton brings new life to a classic console table with amazing attention to detail. The Bianco Carrara marble breakfront top is framed in Mahogany with Greek key decoration. The shape is reprised in the lower tiers. Eight turned legs with gilt banding bring it all together, beautifully.

60 x 19 x 32 in | 152.4 x 48.3 x 81.3 cm



AXH40027.1CIP
Edward Dining Chair

The Edward Dining Chair by Alexa Hampton brings seating to new, striking heights. Stunning curved back crafted from Amara and sophisticated khaya legs shown in Amara finish, brings contemporary luxe to a whole new level.

22 x 25 x 35 in | 55.9 x 63.5 x 88.9 cm



AXH54001.C117
Edward Extending Dining Table

An Austrian center table with neoclassical DNA caught inspired this extendable dining table. Striking sunburst Amara veneered top with Amara finish expands with six radial leaves. The pedestal is a series of four square reversed tapered legs joined by an X stretcher. Hampton brass finish feet.

Open: 84 x 84 x 30 in | 213.5 x 213.5 x 76.2 cm

Closed: 60 x 60 x 30 in | 152.4 x 152.4 x 76.2 cm



AXH54005.C107
Leo Jupe Dining Table

Leo is a Restoration revival table with carved pedestal, inset fold out leaves, scrolled tri-base and claw feet, with radiating veneer top.

Open: 78 x 78 x 30 in | 198.2 x 198.2 x 76.2 cm

Closed: 63 x 63 x 30 in | 160 x 160 x 76.2 cm



AXH54007.C105
Olivia Dining Table

A musical quartet of shaped and carved legs support this extendable dining table top. With brass sabots and legs for days, Olivia is sure to turn heads.

Open: 132 x 52 x 30 in | 335.3 x 132.1 x 76.2 cm

Closed: 84 x 52 x 30 in | 213.3 x 132.1 x 76.2 cm





AXH54002.C105

Sebastiano Extending Dining Table

Sebastiano combines a historic silhouette with an edgy modern sensibility. Rectangular dining table is curved with an apron bound in brass. Set on slatted baluster legs outlined in gilt. Company coming? It's an extendable dining room table with three leaves.

Open: 162 x 50 x 30 in | 411.48 x 127 x 76.2 cm

Closed: 90 x 50 x 30 in | 228.6 x 127 x 76.2 cm





AXH61003.C105
Hamilton Sideboard

Inspired by a favorite French antique buffet sideboard. Bianco Carrara marble top with sculpted corners. Fluted column uprights detailed with cotton-reel cast capitals. Door/drawer fronts adorned with cast brass handles and molding. Turned and fluted tapering legs with a hand painted metallic brass finish. Mahogany solids and Crown veneer.

91 x 20½ x 39½ in | 231.14 x 52.07 x 100.6 cm



AXH61002.C105
Benedict Buffet

Moderne meets Mid Century Modern in this singular sideboard buffet. Channeled paneled design conceived with four drawers and doors, detailed with oval Hampton brass finished handles. Sideboard top is ready to serve with a three-quarter gallery. Lobed reeded tapered legs with brass cappings.

68½ x 18 x 34 in | 174 x 45.72 x 86.34 cm



AXH61001.C162
Andrew Buffet

Andrew puts a modern spin on the traditional buffet cabinet. There's storage aplenty with four frieze drawers, two center doors opening to interior shelves, plus open storage on buffet sides. Doric pilasters flow into turned, tapered legs capped in brass.

80 x 21 x 38 in | 203.2 x 53.34 x 96.52 cm





AXH61005.C105
Max Bar Cabinet

An intoxicating bar cabinet! Mahogany parquet door fronts are overlaid with geometric brass diamond trim and Y handles. Set on square tapered legs with a brass X stretcher. Inside, Max fulfills his liquor cabinet mission: LED-lit with mirror back, glass hangers, galleried shelf, wine rack and two drawers.

35 x 19 x 58 in | 88.9 x 48.3 x 147.32 cm





AXH84001.C105
Denison Sleigh California King Bed

The Denison bed is a nod to Anglo-Indian furniture. Note the modestly scrolled headboard and footboard with caned panels. Reeded rails, flowerhead carved roundels, scroll carvings and turned tapered legs add authenticity and charm.

77¼ x 98½ x 53 in | 196.2 x 250.2 x 134.6 cm

AXH82001.C105
Denison Sleigh US Queen Bed

65¼ x 94½ x 53 in | 166 x 240.1 x 134.6 cm

AXH83001.C105
Denison Sleigh US King Bed

81¼ x 94½ x 53 in | 206.4 x 240.1 x 134.6 cm



AXH50013.C109
Matilde Nightstand

This French neoclassical nightstand is based on an antique in Alexa Hampton's own home. Cherished details abound: pierced brass gallery with Bianco Carrara marble top, pullout tray, single drawer with cast brass handles, tapered legs with brass capitals and feet, and pierced brass gallery lower shelf. Perfect as an end table too!

26 x 18 x 28 in | 66 x 45.75 x 71.12 cm



AXH50028.C110
Regina Nightstand

Sometimes nightstand, accent table or end table, sleek-lined Regina works a room with modern finesse. Ample storage and display space with one open shelf and two drawers with jewelry-like Hampton Brass finish handles. Set on octagonal tapered feet.

26 x 21 x 28 in | 66 x 53.34 x 71.12 cm

AXH60016
Tomaso Chest

The Tomaso Chest by Alexa Hampton is crafted from mahogany with custom cast brass legs and hardware. This sophisticated campaign style chest, finished in Cambridge, features two drawers and exquisite detailing throughout.

34 x 20 x 30 in | 86.4 x 50.8 x 76.2 cm



AXH60010.C105
Leif Chest of Drawers

Three relief-shaped drawers, each with a trio of brass drop handles distinguish this chest of drawers. Modern, geometric and sculptural, Leif works a floor plan. Square tapered legs capped in brass. Chevron Mahogany veneered and crossbanded.

42 x 20 x 34 in | 106.7 x 50.8 x 86.34 cm

AXH60002.C159
McCombs Dresser

There's a not-so-quiet dignity to the McCombs Dresser with three fretwork relief frieze drawers, and six generously sized paneled drawers with Hampton finish brass handles below. A chamfered-edge dresser top and turned tapered legs balance details from top to bottom.

57 x 20 x 36 in | 144.78 x 50.8 x 91.45 cm





AXH31002.C112

Esmé Octagonal Wall Mirror

Esmé mesmerizes. Faceted like a jewel, the octagonal-shaped wall mirror is also set in a frame of octagons. Beveled-edge center mirror plate with coffered mirrored plates surround. A beautiful alternative to a more conventional round mirror.

44 x 1¾ x 44 in | 111.8 x 4.4 x 111.8 cm



AXH31008.C112

Philippe Wall Mirror

Philippe is a modern reimagining of a classic Regency-style wall mirror. The central antique mirror is set in a chevron-leaf carved frame, mitered with an interior frame. A glorious serpentine crest tops the wall mirror.

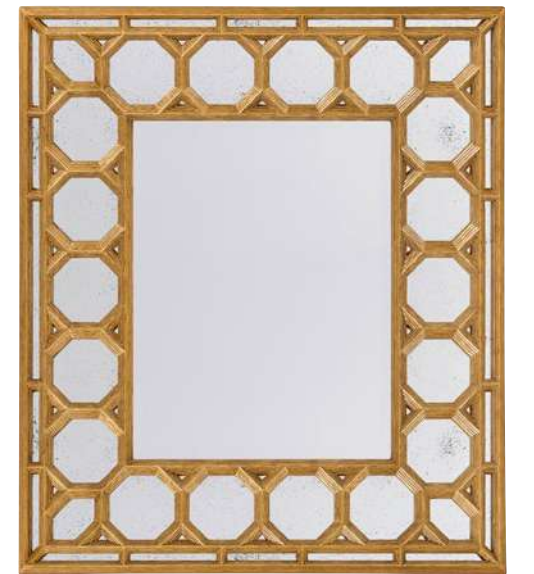
30 x 1¾ x 55¼ in | 76.2 x 4.2 x 140.1 cm

AXH31001.C112

Carmen Rectangular Wall Mirror

Carmen showcases layers of interest. This beveled-edge antiqued mirror center is set in a frame of consecutive octagonal coffered mirrored plates. The optics are gorgeous in this decorative mirror. May be hung horizontally or vertically.

36½ x 1¾ x 42½ in | 92.9 x 4.4 x 108.2 cm





ALTHORP[®]

LIVING HISTORY[™]

The Histories of The Spencer Family's Heritage and Althorp are So Tightly Entwined that They Would Be Impossible to Unravel and Separate. These Spencer Ancestors Were Able to Indulge Their Tastes – to Commission Art, Furniture, and All The Finer Things in Life. You Can See The Spencer Touch in Every Corner of Althorp – this Historic House that My Family has Called "home" for Over 500 Years, and Which for The Past Decade, has Been Given Unprecedented Care and Attention.



AL50061
Ingenious Nest of Tables

A mahogany lamp table, the square three quarter brass galleried top on ring turned legs joined by stretchers, the underside with two removable 'X' stand, fold-out circular occasional tables.

Open: 19½ x 19½ x 24 in | 49.53 x 49.53 x 60.96 cm

Closed: 16¾ x 4¾ x 20¼ in | 42.55 x 12.07 x 51.44 cm



AL50174
After Dinner Drinks Table

A flame mahogany, Movingue and rosewood banded Gueridon table, the circular top with a brass molded edge, the plain frieze above scrolled legs joined by a brass molded stepped tier and acanthus leaf carved and gilt feet, on a trefoil concave sides base with turned mahogany bun feet.

26 x 26 x 26 in | 66.04 x 66.04 x 66.04 cm



AL50079
Admiralty Accent Table

A mahogany lamp table, the circular brass bound top fitted with a frieze drawer on three bound brass hilted sabres mounted on a trefoil platform base with brass lion's paw feet. Inspired by the 2nd Earl Spencer, appointed 1st Lord of the Admiralty in 1795. The original Regency.

16¾ x 16¾ x 28 in | 42.55 x 42.55 x 71.12 cm



AL50065
Caryatids Accent Table

A mahogany and ormolu mounted occasional table, the brass bound shaped circular top above a morado veneered frieze enclosed by foliate mounts, on three cabriole legs with caryatid mounts terminating in sabots, united by a shaped undertier.

17¾ x 18 x 29 in | 45.4 x 45.72 x 73.66 cm



AL50005
Sunderland Candle Stand Accent Table

A mahogany candle stand, the circular moulded edge top on a delicately turned baluster column terminating in a dished and moulded circular brass bound platform base.

11½ x 11½ x 28¼ in | 29.21 x 29.21 x 71.76 cm

AL11033
The Butterfly Accent Table

A marquetry inlaid butterfly work table, the top inlaid with morado, burl and amboyna and with two hinged 'wing' panels opening to reveal the painted Spencer crest, on a ring and baluster turned column and delicate down swept tapering legs and peg feet.

17 x 15¾ x 28 in | 43.18 x 40.01 x 71.12 cm



AL50195
South Drawing Room Occasional Table

A renowned piece in the collection, this turned occasional pedestal table is sure to command attention. Seen here in Dibdin Crotch finish and complemented with an incredibly intricate brass inlaid apron inspired by a table in the South Drawing Room of the Althorp House. The brass-wrapped posts are supported by three alluring sabre legs finished with embellished brass cappings.

24 x 24 x 26 in | 61 x 61 x 66 cm





AL54014
Lavinia's Supper Party Centre Table
 A morado and pollard banded circular dining table, with a carved edge and four frieze drawers with brass handles, the hexagonal column issuing outswept reeded legs on castors. The original Regency.
 48 x 48 x 30 in | 121.92 x 121.92 x 76.2 cm



AL53058
Long Hall Chinoiserie Console Table
 A fine ebonized and Chinoiserie painted Console Table with gilt detailing, the molded edge rectangular top with a finely painted garden panorama on a cream background, the pierced fretwork frieze on chamfered legs with Pointe feet.
 60 x 14 x 34 in | 152.4 x 35.6 x 86.4 cm



AL61091
Daguerre Chinoiserie Cabinet
 An ebonized mahogany and parcel gilt Chinoiserie side cabinet, the rectangular molded edge top with protruding rounded corners, above two brass molding paneled drawers with brass handles, above two brass molding paneled and carved doors with hand painted Chinoiserie scenes, the base with bound reed carved details flanked by turned and fluted columns and on turned and tapering legs.
 46 x 13 x 32 in | 116.8 x 33 x 81.3 cm



AL53059
Long Hall Burl Console Table
 A fine ebonized and poplar burl veneered Console Table with gilt detailing, the molded edge rectangular top veneered with poplar burl, the pierced fretwork frieze on chamfered legs with Pointe feet.
 60 x 14 x 34 in | 152.4 x 35.6 x 86.4 cm



AL71027HN
The Grand Staircase Fall Front Desk & Bureaux

A fine flame veneered bureau, the sloping fall enclosing a fitted interior of faux book and hidden drawers and cabinets, the staircase gallery interior, above a short frieze drawer flanked by dummy drawers, with two short and two long drawers below, on bracket feet; the sides with further drawers and hidden drawers.

Open: 45½ x 45½ x 44 in | 115.57 x 115.57 x 111.76 cm

Closed: 45½ x 23¼ x 44 in | 115.57 x 59.05 x 111.76 cm





AL63004
The Sunderland Room Cabinet

A mahogany and flame veneered breakfront bookcase, the upper sections with a moulded cornice above a fluted frieze ornamented with dentils and oval rosettes, the bold diamond lattice astragal glazed doors enclosing reeded edge shelves above two cupboard doors, each flanked by three short drawers with swag drop handles on a plinth base.

96¾ x 18 x 96½ in | 245.75 x 45.72 x 245.11 cm

AL41067.2AAJ
Ad Victoriam

An exceptionally well hand carved mahogany library armchair, the back in the shape of a ship's transom carved with a Coat of Arms centred by the Spencer crest and flanked by Victory wreaths. Inspired by a Regency original.

27¼ x 25 x 44¼ in | 69.2 x 63.5 x 112.4 cm

Upholstered in Antique Buffalo Brown-LE0012 Leather
 Trim: TA Vintage Nail



AL40023
The Wootton Hall Accent Chair

A finely carved mahogany hall chair, the arched cartouche back with acanthus leaf details centred by the hand-painted Spencer crest, the solid seat above a swag carved seat rail on square tapering legs.

20½ x 21 x 40 in | 52.07 x 53.34 x 101.6 cm

**AL41019.1ABM
Lavinia's Armchair**

An ebonised and parcel gilt open armchair, the overscrolled back centred by a painted rectangular panel, with a caned and cushion seat, the cushions in blue silk hand-embroidered with coronets, on a Greek key seat rail and on ring turned tapering. The original Regency, circa 1820.

23½ x 24½ x 36 in | 59.69 x 62.23 x 91.44 cm

Upholstered in Umber-UP0176A Fabric
Trim: Welting



**AL40087.1AXT
Floris Side Chair**

A hand carved mahogany scoop back dining chair, the panelled and upholstered back above an upholstered seat, on turned and reeded legs.

22½ x 25½ x 36½ in | 57.15 x 64.77 x 92.7 cm

Upholstered in Halo-UP0606 Fabric
Trim: Welting



**AL41087.1AXT
Floris Armchair**

A hand carved mahogany scoop back dining armchair, the panelled and upholstered back above an upholstered seat flanked by scroll arms, on turned and reeded legs.

24½ x 25½ x 36½ in | 62.23 x 64.77 x 92.7 cm

Upholstered in Halo-UP0606 Fabric
Trim: Welting



**AL54031
Sunderland Dinner Party Dining Table**

A fine mahogany and flame veneered extending dining table, the rectangular reeded edge top with rounded corners crossbanded in chestnut burl and morado, with two additional self storing leaves, above a mahogany apron, on two baluster turned pedestals each issuing four downswept legs terminating in finely leaf cast brass cappings.

Open: 144 x 48 x 30 in | 365.8 x 122 x 76.2 cm

Closed: 96 x 48 x 30 in | 243.8 x 122 x 76.2 cm

AL40802.2AJB
The Seddon Side Chair

A mahogany dining chair, the shaped waisted back with serpentine uprights above an upholstered seat, on elegant moulded cabriole legs terminating in spade feet. The original very large set designed by George Seddon circa 1800.

20¼ x 24¼ x 38½ in | 51.44 x 61.6 x 97.79 cm

Upholstered in Swirl Brown-LE0012 Leather
 Trim: French Natural Nail



AL41043.2AJB
The Seddon Armchair

A mahogany dining armchair, the shaped waisted back with serpentine uprights above an upholstered seat, on elegant moulded cabriole legs terminating in spade feet. The original very large set designed by George Seddon circa 1800.

26 x 25 x 38 in | 66.04 x 63.5 x 96.5 cm

Upholstered in Swirl Brown-LE0012 Leather
 Trim: French Natural Nail



AL54009
The Althorp Patent Jupe Table

A circular extending mahogany dining table crossbanded with burl and morado, the top is formed of eight pull - out triangular segments with inset fold out leaves to expand the table, raised on a bold turned pillar with a hexagonal base with concave sides and outswept legs with finely cast brass cappings and disc feet.

Open: 78 x 78 x 30 in | 198.12 x 198.12 x 76.2 cm

Closed: 62½ x 62½ x 30 in | 158.75 x 158.75 x 76.2 cm



AL61087
Peacock Cabinet

A finely hand painted and black lacquered cabinet on stand, the cabinet with gold leaf and hand painted decoration of peacocks in a landscape, with fine repousse chased brass mounts, on a base with chamfered legs and fretwork spandrels hand painted in floral and lattice decoration. The LED lit interior fitted as a bar with a mirror back and adjustable glass shelf.

37 x 21 x 64 in | 93.98 x 53.34 x 162.56 cm



AL61090
Medallion Sideboard

An ebonized serpentine sideboard, the breakfront top with a pierced fretwork gallery above two fretwork trellis doors enclosing two further shaped doors with an elaborate Chinoiserie painted cartouche handle, the interior with three sections each with an adjustable shelf, above a pierced fretwork apron on square legs with Marlborough feet.

62 x 19¼ x 38 in | 157.5 x 48.9 x 96.5 cm



AL83010
The India Silk US King Bed

A carved mahogany, flame veneered and parcel gilt four poster US King Bed, the arched headboard with a carved cornice and finely carved acanthus leaf carved baluster and cluster columns with spiral carved pine cone finials. The original George III, circa 1760 in the India Silk Room.
 86 x 88¼ x 97¼ in | 218.4 x 224 x 247 cm



AL11070
The Spencer Dressing Box

A mahogany dressing table on stand, the hinged top opening to reveal a bevelled mirror back, with bowed and square swing panels revealing a fitted interior, with a drawer below and a side bowl drawer to the apron, on splayed legs joined by an 'x' stretcher with the Spencer coronet.
 16 x 13 x 33 in | 40.64 x 33.02 x 83.82 cm



AL60030
The India Silk Bedside Nightstand

A flame veneered and mahogany bombé bedside chest of drawers, the rectangular moulded edge top above a brushing slide with three shaped serpentine and graduated drawers below, applied with finely cast brass escutcheons and drop handles, on a plinth base with ogee bracket feet. The original George III, circa 1770, in the manner of Thomas Chippendale.
 28 x 19¾ x 30 in | 71 x 50.2 x 76.2 cm



AL60008
Arabella's Regency chest of drawers

A mahogany and flame veneered bowfront chest of drawers, fitted with a brushing slide and four graduated rounded drawers fitted with lion's mask drop handles flanked by reeded and bound column uprights on brass lion's paw feet.
 38 x 22 x 36 in | 96.52 x 55.88 x 91.44 cm



AL60044
Viscount's Nightstand

A flame mahogany, Movingue and rosewood banded nightstand, the rectangular top with canted corners and a three quarter brass gallery, three drawers with fine brass handles and on paneled tapering legs.
 28 x 20 x 27 in | 71.12 x 50.8 x 68.6 cm



AL60043
Viscount's Chest of Drawers

A flame mahogany, Movingue and rosewood banded chest of drawers, the rectangular top with canted corners, the two short drawers with lapette carved recessed molding, with a paper twist and rosette carved molding below with two further long drawers, all with fine brass handles and on paneled tapering legs.
 46 x 21 x 36 in | 116.84 x 53.34 x 91.44 cm



AL60009
The India Silk Serpentine Chest

A large mahogany and flame veneered bombé chest of drawers, the rectangular moulded edge top above a brushing slide with four shaped serpentine and graduated drawers below, applied with finely cast brass escutcheons and drop handles, on a plinth base with ogee bracket feet.

43 x 20 x 32 in | 109.22 x 50.8 x 81.28 cm



AL31038
The India Silk Bedroom Wall Mirror

A carved mahogany, flame veneered and parcel gilt wall mirror, the arched broken swan neck crest with a carved moulding and centred by a spiral carved pine cone finial, the rectangular bevelled edge mirror below framed by a bound reed slip with swag carving above and a leaf carved pendant apron below. Inspired by the George III bed in the India silk Room, circa 1760.

37¾ x 3¾ x 62 in | 96 x 9.8 x 157.5 cm



AL60031
The India Silk Dresser

A fine flame veneered and mahogany serpentine dresser, the moulded edge top above an arrangement of twelve bombé and shaped drawers with brass handles and escutcheons, on ogee bracket feet. Inspired by a George III original in the manner of Thomas Chippendale.

70½ x 20 x 34½ in | 179 x 50.8 x 87.6 cm



AL64001
The Washington Chest

An oak blanket chest, the moulded edge top, above a panelled back and sides, the front carved with ovals and lozenges on stile supports with ogee spandrels. The original English, circa 1650.

53 x 23 x 28¼ in | 134.62 x 58.42 x 71.76 cm



DORCHESTER

by **Stephen Church**

The Dorchester Collection is an accomplished reimagining of early 20th century design. Pairing decorative ornamentation with masterfully sculpted forms, handcrafted silhouettes lend themselves to a refined and sumptuous presence across swooping curves, tapered lines, and modern profiles.

SC50039

Dorchester Drink Table

Outlined in a slender, decorative motif, the Dorchester Drink Table possesses refined and sumptuous presence that recalls the early 1900s. Finished in Mayfair and figured walnut.

13¾ x 13¾ x 25 in | 34.8 x 34.8 x 63.5 cm



SC50051

Dorchester End Table II

Outlined in a sleek, stepped motif, the Dorchester End Table recalls the luxurious craftsmanship of the Art Origins period. Finished in Mayfair and figured walnut.

24 x 24 x 24 in | 61 x 61 x 61 cm



SC51024

Dorchester Round Cocktail Table II

Outlined in a sleek, stepped motif, the Dorchester Round Cocktail Table recalls the luxurious craftsmanship of the Art Origins period. Finished in Mayfair and figured walnut.

42 x 42 x 17½ in | 106.7 x 106.7 x 44.4 cm

SC50046

Dorchester Side Table

Outlined in a slender, decorative motif, the Dorchester Side Table possesses refined and sumptuous presence that recalls the early 1900s. Finished in Mayfair and figured walnut.

22 x 22 x 24 in | 55.8 x 55.9 x 61 cm



SC51020

Dorchester Cocktail Table

Outlined in a slender, decorative motif, the Dorchester Cocktail Table possesses refined and sumptuous presence that recalls the early 1900s. Finished in Mayfair and figured walnut.

54 x 32 x 17½ in | 137.2 x 81.3 x 44.4 cm



SC71013
Dorchester Desk II

Outlined in a sleek, stepped motif, the Dorchester Desk recalls the luxurious craftsmanship of the Art Origins period. Finished in Mayfair and figured walnut.

60 x 28 x 30¼ in | 152.4 x 71.1 x 76.9 cm



SC53022
Dorchester Console Table

Outlined in a slender, decorative motif, the Dorchester Console Table possesses refined and sumptuous presence that recalls the early 1900s. Finished in Mayfair and figured walnut.

54 x 15 x 34 in | 137.2 x 38.1 x 86.4 cm



SC63002
Dorchester Bookcase II

In the five-shelf Dorchester Bookcase, a rounded, stepped motif recalls the brilliant craftsmanship of the Art Origins period. At the base, thin tapered legs serve as beautiful complements. Finished in Mayfair and figured walnut.

40 x 16 x 80 in | 101.6 x 40.6 x 203.2 cm



SC40010.1CLK
Dorchester Side Chair

The Dorchester Side Chair recalls the French Art Origins period through swooping curves and visually pleasing forms. Finished in Mayfair and figured walnut.

21½ x 26½ x 40 in | 54.6 x 67.3 x 101.6 cm

Upholstered in Marshmallow-UP6170 Fabric / Trim: Welting



SC41010.1CLK
Dorchester Armchair

The Dorchester Armchair recalls the French Art Origins period through swooping curves and visually pleasing forms. Finished in Mayfair and figured walnut.

23½ x 26½ x 40 in | 59.6 x 67.3 x 101.6 cm

Upholstered in Marshmallow-UP6170 Fabric / Trim: Welting



SC54027
Dorchester Dining Table

Outlined in a slender, decorative motif, the Dorchester Dining Table possesses refined and sumptuous presence that recalls the early 1900s. Finished in Mayfair and figured walnut.

128 x 48 x 30 in | 325.1 x 121.9 x 76.2 cm





SC61039
Dorchester Cabinet

Outlined in a slender, decorative motif, the Dorchester Cabinet possesses refined and sumptuous presence that recalls the early 1900s. Finished in Mayfair and figured walnut.

48 x 20 x 37 in | 121.9 x 50.8 x 94 cm



SC61040
Dorchester Sideboard

Outlined in a slender, decorative motif, the Dorchester Sideboard possesses refined and sumptuous presence that recalls the early 1900s. Finished in Mayfair and figured walnut.

95 x 22 x 37 in | 241.3 x 55.9 x 94 cm



SC83009.1CLK
Dorchester US King Bed II

A refined and sumptuous presence, the Dorchester US King Bed recalls the luxurious craftsmanship of the Art Origins period through a decorative stepped motif. Finished in Mayfair and figured walnut.

81½ x 86¼ x 64 in | 206.9 x 219.3 x 162.6 cm

Upholstered in Marshmallow-UP6170 Fabric / Trim: Welting

SC82009.1CLK
Dorchester US Queen Bed II

65½ x 86¼ x 64 in | 166.4 x 219.3 x 162.6 cm

SC84009.1CLK
Dorchester California King Bed II

77½ x 90¼ x 64 in | 196.9 x 229.2 x 162.6 cm



SC60029
Dorchester Small Nightstand II

Outlined in a sleek, stepped motif, the Dorchester Small Nightstand recalls the luxurious craftsmanship of the Art Origins period. Finished in Mayfair and figured walnut.

24 x 20 x 28½ in | 61 x 50.8 x 72.4 cm



SC31004
Dorchester Mirror IV

The Dorchester Mirror beautifully depicts design ideals of the early 1900s through simple lines and a clean, rectangular shape. Finished in Mayfair and figured walnut.

30 x 2 x 50 in | 76.2 x 5.08 x 127 cm



SC31001
Dorchester Mirror II

The Dorchester Mirror II beautifully depicts design ideals of the early 1900s through simple lines and a clean, rounded shape. Finished in Mayfair and figured walnut.

30 x 2 x 50 in | 76.2 x 5.1 x 127 cm



SC60028
Dorchester Nightstand II

Outlined in a sleek, stepped motif, the Dorchester Nightstand recalls the luxurious craftsmanship of the Art Origins period. Finished in Mayfair and figured walnut.

32 x 20 x 28½ in | 81.3 x 50.8 x 72.4 cm



SC60030
Dorchester Dresser II

Outlined in a sleek, stepped motif, the six-drawer Dorchester Dresser recalls the luxurious craftsmanship of the Art Origins period. Finished in Mayfair and figured walnut.

64 x 20 x 36 in | 162.6 x 50.8 x 91.5 cm



THEODORE ALEXANDER

THE ENGLISH CABINET MAKER COLLECTION

Stephen Church is a master Cabinetmaker. By designing as well as making fine furniture he follows the tradition of English 18th century cabinetmakers from Adam and Chippendale to Hepplewhite and Sheraton.

Today those traditions are maintained with pride by a selected team of craftsmen working at Theodore Alexander.

5105-280

Plymouth Grove Cocktail Table

A flame veneered, satinwood and morado crossbanded cocktail table, the rectangular top with rounded protruding corners with two opposing and offset side drawers, on turned, tapering and reeded legs joined by a concave sided undertier, on brass feet.

54 x 34 x 20½ in | 137.2 x 86.4 x 51.8 cm



5005-867

Edgeworth Side Table

A morado and satinwood veneered accent table, the oval moulded edge top with a floral oval penwork detail inlay, above a crossbanded frieze and on ebonised and gilt ring turned mahogany splayed legs terminating in finely cast brass feet, joined by a concave sided undertier. The top pivoting to reveal storage underneath.

28 x 18 x 25 in | 71.12 x 45.72 x 63.5 cm



SC51014

The Verily Cocktail Table

A flame Cerejeira veneered and parquetry crossbanded cocktail table, the oval caddy molded top centered by an amboyna burl veneered oval, the finely cast brass capital reeded mahogany legs terminating in splayed feet with reeded brass cappings and joined by a parquetry banded undertier.

54 x 34 x 20 in | 137.16 x 86.36 x 50.8 cm



5305-203

The Georgian Cabinetmaker Console Table

A figured mahogany, eucalyptus and morado crossbanded console table, the serpentine top with a bowed front and sides centred by a morado oval inlay, the banded frieze with two frieze drawers with natural brass handles, on turned and fluted tapering legs. Inspired by a George III original.

48 x 17 x 34 in | 121.92 x 43.2 x 86.4 cm



5305-256

Grandison Console Table

A fine flame walnut and yew burl veneered console table, the yew burl crossbanded top with a concave front and sides, with protruding rounded corners above three line strung frieze drawers, on turned and fluted tapering legs terminating in brass cappings. Inspired by an original Regency desk.

60 x 16 x 34 in | 152.5 x 40.5 x 86.5 cm



SC61028

Tristam Cabinet

A fine flame mahogany and Morado banded side cabinet with fine double stringing throughout, the serpentine top with a parquetry edge above two panel inlaid drawers with floral brass handles, above two paneled doors enclosing an adjustable shelf, flanked by satinwood faux fluted inlaid columns, on a serpentine plinth base.

50½ x 17 x 34 in | 128.2 x 43.2 x 86.36 cm



7105-232

Fine Lines in Revolutionary France Writing Table

A finely morado crossbanded, sycamore line strung flame veneered and carved mahogany writing table, the concave sided top with a burnished leather and gold tooled insert to the top and end slides, with morado crossbanded frieze drawers, on fluted and turned tapering legs with fluted brass feet.

60 x 38 x 30¼ in | 152.5 x 96.5 x 76.8 cm



4000-866.1AVJ
Atcombe Side Chair

A finely carved mahogany dining chair, the upholstered framed back with a swirl mahogany veneered scroll over top rail with fine brass details, the upholstered seat on panelled seat rails with turned and fluted legs with splay feet.

21 x 27½ x 41 in | 53.3 x 70 x 104 cm

Upholstered in Lillian Cream-UP5044 Fabric / Trim: Welting



4100-866.1AVJ
Atcombe Armchair

A finely carved mahogany dining armchair, the upholstered framed back with a swirl mahogany veneered scroll over top rail with fine brass details, the upholstered seat between part padded arms, on panelled seat rails with turned and fluted legs with splay feet.

23½ x 27½ x 41 in | 59.7 x 70 x 104 cm

Upholstered in Lillian Cream-UP5044 Fabric / Trim: Welting



4005-045.1BFD
Sheraton's Satinwood Side Chair

A fine mahogany, satinwood and walnut burl veneered dining chair, the arched back with a finely veneered arched top rail between reeded uprights and above a padded back and bowed seat, on reeded square tapering legs with spade feet. Inspired by an 18th century original by Thomas Sheraton.

22 x 24¾ x 40 in | 56 x 63 x 101.5 cm

Upholstered in Draper Performance-UP5409 Fabric / Trim: Welting



4105-045.1BFD
Sheraton's Satinwood Armchair

A fine mahogany, satinwood veneered and walnut burl veneered armchair, the arched top rail above a padded back enclosed by reeded uprights, scroll arms and uprights, the upholstered seat on square tapering and reeded legs with spade feet. Inspired by an 18th century original by Thomas Sheraton.

23½ x 25¼ x 43 in | 59.7 x 64 x 109.2 cm

Upholstered in Draper Performance-UP5409 Fabric / Trim: Welting



4000-787.1BOA
Gabrielle's Side Chair

A mahogany side chair, the overscroll padded back and seat above floral capital carved and panelled sabre legs. Inspired by a 19th century French original.

23 x 32 x 42½ in | 58.5 x 81.3 x 108 cm

Upholstered in Alpaca-UP5329A Fabric / Trim: Welting



4100-787.1BOA
Gabrielle's Armchair

A mahogany armchair, the overscroll padded back and seat between open scroll arms and above floral capital carved and panelled sabre legs. Inspired by a 19th century French original.

25¼ x 32 x 42½ in | 64 x 81.3 x 108 cm

Upholstered in Alpaca-UP5329A Fabric / Trim: Welting



5405-236
Gabrielle's Dining Table

A mahogany and swirl veneered and crossbanded extending dining table, the rectangular top opening to accommodate two additional self storing leaves, the panelled satinwood veneered frieze above a bold base of four turned reeded columns on a platform base issuing four outswept legs with brass cappings.

Open: 132 x 54 x 30 in | 335.3 x 137.2 x 76.2 cm

Closed: 84 x 54 x 30 in | 213.5 x 137.2 x 76.2 cm

5305-214
Stanhope Row Sideboard

A mahogany, flame veneered and line strung sideboard, the serpentine morado crossbanded top with protruding corners above turned uprights and tapering fluted legs, the central double fronted frieze drawer above an arched apron, flanked by two concave fronted drawers, on turned tapering legs.

68 x 17¾ x 37½ in | 172.7 x 44.8 x 95.3 cm



6005-448
lbthorpe Nightstand

A fine flame veneered chest of drawers, the bowfront satinwood crossbanded top with concave corners and uprights, above a veneered slide and four graduated bowfront drawers, with natural brass handles, on splay legs.

36 x 20 x 32¼ in | 91.5 x 50.8 x 82 cm



6105-436
Donwell Buffet

A fine mahogany veneered and yew burl banded buffet, the break bowfront top with an ebony and brass inlaid edge, above an arrangement of four frieze drawers and central cabinet doors enclosing an adjustable shelf, flanked by two sets of three graduated drawers and turned and tapering columns, on line strung plinth base.

89½ x 22 x 36½ in | 227.3 x 56 x 92.7 cm





SLOANE

by **Stephen Church**

A contemporary reinterpretation of designs from the 18th and 19th centuries, the Sloane Collection is a refined homage to the American Federal era and its English influences. Artisanal craftsmanship brings to life the balanced forms and pleasing silhouettes, while resplendent materials elegantly complete the pieces.



SC50045
Sloane Folding Table

The Sloane Folding Table is a magnificent reflection of late 1700s craftsmanship. Beneath an impressive etioime crotch surface, slender legs offer a sense of quiet refinement. Formed from luxurious etioime crotch. Finished in Edwardian Brown.

28 x 21 x 27 in | 71.1 x 53.4 x 68.7 cm



SC50041
Sloane Nesting Table

The Sloane Nesting Table takes a resplendent Federal-era form. At the surface, inwardly curved edges supply shape to a beautiful okoume crotch veneer. Handcrafted from okoume crotch and khaya. Finished in Edwardian Brown.

24 x 16 x 27½ in | 61 x 40.6 x 69.9 cm



SC50040
Sloane End Table

The Sloane End Table takes a resplendent Federal-era form. At the surface, inwardly curved edges supply shape to a beautiful okoume crotch veneer. Beneath, tapered legs add a sense of refinement. Handcrafted from okoume crotch and khaya. Finished in Edwardian Brown.

25 x 18 x 25 in | 63.5 x 45.7 x 63.5 cm



SC51021
Sloane Cocktail Table

The Sloane Cocktail Table takes a resplendent Federal-era form. At the surface, inwardly curved edges supply shape to a beautiful okoume crotch veneer. Beneath, tapered legs add a sense of refinement. Handcrafted from okoume crotch and khaya. Finished in Edwardian Brown.

54 x 32 x 19 in | 137.2 x 81.3 x 48.3 cm





SC50042
Sloane Round Occasional Table

The Sloane Round Occasional Table is a luxurious, mixed material design. At the top, a rounded Gold Dolomite marble surface is complemented by a beautiful walnut inlay. Hand Formed with luxurious khaya and walnut woods. Finished in Edwardian Brown.
20 x 20 x 24 in | 50.8 x 50.8 x 61 cm



SC50043
Sloane Occasional Table

The Sloane Occasional Table is a luxurious, mixed material design. At the top, a rounded Gold Dolomite marble surface is complemented by a beautiful walnut inlay. Hand Formed with luxurious khaya and walnut woods. Finished in Edwardian Brown.
16 x 12 x 23 in | 40.6 x 30.5 x 58.6 cm



SC50047
Sloane Round Occasional Table II

The Sloane Round Occasional Table II is a luxurious, mixed material design. At the top, a canted cerejeira crotch surface is complemented by a beautiful morado inlay. Hand Formed with luxurious cerejeira crotch and morado woods. Finished in Edwardian Brown.
20 x 20 x 24 in | 50.8 x 50.8 x 61 cm



SC50048
Sloane Occasional Table II

The Sloane Occasional Table II is a luxurious, mixed material design. At the top, a canted cerejeira crotch surface is complemented by a beautiful morado inlay. Hand Formed with luxurious cerejeira crotch and morado woods. Finished in Edwardian Brown.
16 x 12 x 24 in | 40.6 x 30.5 x 61 cm



SC61043
Sloane Display Cabinet

A magnificent khaya swirl draws the eye across the surface and body of the Sloane Display Cabinet. Handcrafted from khaya swirl and khaya wood. Finished in Edwardian Brown.

58½ x 22 x 90 in | 148.6 x 55.9 x 228.6 cm



SC53023
Sloane Console Table

The Sloane Console Table takes a resplendent Federal-era form. At the surface, inwardly curved edges supply shape to a beautiful okoume crotch veneer. Beneath, tapered legs add a sense of refinement. Handcrafted from okoume crotch and khaya. Finished in Edwardian Brown.

48 x 15 x 34 in | 121.9 x 38.1 x 86.4 cm





SC71011
Sloane Writing Table

With a magnificent walnut surface, the Sloane Writing Table takes a refined form atop a pedestal base. Handcrafted from walnut crotch. Finished in Edwardian Brown.

60 x 36 x 30½ in | 152.4 x 91.5 x 77.5 cm



SC71010
Sloane Desk

With a magnificent walnut surface, the nine-drawer Sloane Desk takes a refined form atop a pedestal base. Handcrafted from makore and walnut crotch. Finished in Edwardian Brown.

60 x 36 x 30½ in | 152.4 x 91.5 x 77.5 cm





SC40011.1CSN
Sloane Side Chair

The Sloane Side Chair is a beautiful homage to English influence in 19th century design. Sumptuous upholstery across the backs and arms add a sense of refinement, while slender, saber legs compose the delicate form of the base. Handcrafted from khaya swirl and khaya wood. Finished in Edwardian Brown.

20 x 26½ x 42 in | 50.8 x 67.3 x 106.7 cm

Upholstered in UP6712 Fabric / Trim: Welting



SC41011.1CSN
Sloane Armchair

The Sloane Armchair is a beautiful homage to English influence in 19th century design. Sumptuous upholstery across the backs and arms add a sense of refinement, while slender, saber legs compose the delicate form of the base. Handcrafted from khaya swirl and khaya wood. Finished in Edwardian Brown.

23¼ x 26½ x 42 in | 58.90 x 67.30 x 106.70 cm

Upholstered in UP6712 Fabric / Trim: Welting



SC54029
Sloane Dining Table

Characterized by a refined aesthetic, the Sloane Dining Table features curved corners, saber legs, and a magnificent khaya swirl surface. Handcrafted from khaya swirl and khaya wood. Finished in Edwardian Brown.

Open: 140 x 48 x 30 in | 355.6 x 121.9 x 76.2 cm

Closed: 96 x 48 x 30 in | 243.8 x 121.9 x 76.2 cm





SC40012.1CSN
Sloane Side Chair II

The Sloane Side Chair II is a beautiful transition piece. Along the back, a light, rounded motif conveys an understated richness, while slender, sabre legs add a refined elegance. Handcrafted from khaya swirl and khaya wood. Finished in Edwardian Brown.

22 x 25¾ x 39¾ in | 55.9 x 65.4 x 101 cm

Upholstered in UP6712 Fabric / Trim: None



SC41012.1CSN
Sloane Armchair II

The Sloane Armchair II is a beautiful transition piece. Along the back and arms, a light, rounded motif conveys an understated richness, while slender, sabre legs add a refined elegance. Handcrafted from khaya swirl and khaya wood. Finished in Edwardian Brown.

24 x 25¾ x 39¾ in | 61 x 65.4 x 101 cm

Upholstered in UP6712 Fabric / Trim: None



SC61042
Sloane Cabinet

A magnificent khaya swirl draws the eye across the surface and body of the two-door Sloane Cabinet. Handcrafted from khaya and makore woods. Finished in Edwardian Brown.

58½ x 22 x 37 in | 148.6 x 55.9 x 94 cm



SC61041
Sloane Buffet

A magnificent khaya swirl draws the eye across the surface and body of the three-door Sloane Buffet. Handcrafted from khaya and makore woods. Finished in Edwardian Brown.

78½ x 22 x 37 in | 199.4 x 55.9 x 94 cm



THEODORE ALEXANDER



Stephen Church

Stephen Church is a Master Cabinetmaker who designs as well as crafts fine furniture following the tradition of English 18th century cabinet makers from Adam and Chippendale to Hepplewhite and Sheraton.



The Stephen Church Collections

Today those traditions are maintained with pride by a selected team of craftsmen working at Theodore Alexander.

Stephen acquired a thorough practical knowledge of traditional cabinet making techniques and materials from an early age and has broadened his horizons by working for many years with some of the world's leading furniture specialists.

His experienced eye and attention to detail bring together the finest woods and exotic veneers which are finished by hand to Stephen's exacting standards, thus replicating the aged color and patina of the finest pieces created by his famous predecessors.





SC50031
The Timothy Side Table

A fine golden Madrone burl veneered and Morado banded side table, the rounded square brass molded top with finely cast and engraved brass capitals and mounts and spiral turned mahogany legs, joined by a brass molded undertier and terminating in turned tapering legs with engraved cast brass toupie feet.

26 x 26 x 26½ in | 66 x 66 x 67.3 cm



SC51016
The Timothy Cocktail Table

A fine golden Madrone burl veneered and Morado banded cocktail table, the oval brass molded top with finely cast and engraved brass capitals and mounts and spiral turned mahogany legs, joined by a brass moulded undertier with bevelled Glass insert and terminating in turned tapering legs with engraved cast brass toupie feet.

48 x 28½ x 20 in | 121.92 x 72.39 x 50.8 cm



SC50011
Millard Accent Table

An Oxford finish swirl walnut and mahogany banded Accent Table with Primavera and ebonized stringing details, the serpentine shaped edge top on a finely acanthus carved and segmented column, on 'S' scroll veneered and strung legs.

21 x 21 x 26 in | 53.34 x 53.34 x 66.04 cm



SC50010
Oval Millard Accent Table

An Oxford finish swirl walnut and mahogany banded Accent Table with Primavera and ebonized stringing details, the serpentine molded edge oval top above a shaped frieze on finely acanthus carved cabriole legs joined by a serpentine oval undertier.

24 x 16 x 26 in | 61 x 40.64 x 66.04 cm



SC50029
Paulette Side Table II

A very fine mahogany and etimoe veneered side table, the Morado and Movingue crossbanded top with fine stringing and a paper twist marquetry design in sycamore and mother of pearl, inlaid to the center with a flowerhead roundel with mother of pearl details, bound in brass above a paneled frieze with floral brass accents and brass inlay, on fluted columns with acanthus capitals and bases, joined by a Movingue crossbanded concave sided undertier.

26¼ x 26¼ x 26¼ in | 66.6 x 66.6 x 66.6 cm



SC51011
Paulette Cocktail Table II

A very fine mahogany and etimoe veneered cocktail table, the Morado and Movingue crossbanded top with fine stringing and a paper twist marquetry design in sycamore and mother of pearl, inlaid to the center with a bold flowerhead with mother of pearl floral details, bound in brass above a paneled frieze with floral brass accents and brass inlay, on fluted columns with acanthus capitals and bases, joined by a Movingue crossbanded concave sided undertier.

64 x 42 x 21 in | 162.56 x 106.7 x 53.3 cm



SC50001
Adolphus Side Table

Solid Mahogany, Etimoe Veneer & Primavera Veneer Walcot Finish with Floral and Brass Line Inlaid Details Old English Brass Accents

26 x 26 x 26 in | 66 x 66 x 66 cm



5005-734
Yorke Side Table

A fine flame veneered, satinwood and morado crossbanded lamp table, the square top with rounded protruding corners above a frieze drawer with brass handles, on reeded tapering legs joined by a concave sided undertier, on reeded brass feet.

24 x 24 x 27¼ in | 61 x 61 x 69.2 cm



SC50013
Aleron Side Table

A finely Walcot finish Etimoe and Movingue banded side table with fine brass inlaid stringing, the oval top above a veneered frieze on turned and fluted legs with acanthus leaf cast brass capitals and feet, joined by a concave sided undertier.

25 x 17 x 26 in | 63.5 x 43.2 x 66.04 cm



SC50002
Beckett Accent Table

Solid Mahogany, Etimoe Veneer & Primavera Veneer
Walcot Finish with Brass Line Inlaid Details
Old English Brass Accents

18 x 18 x 29 in | 45.7 x 45.7 x 73.6 cm



SC53008
Aleron Serving Table

A fine Etimoe veneered serving table with Movingue crossbanding and brass inlaid stringing, the serpentine top above a finely veneered frieze with three frieze drawers with fine brass handles centered by floral brass inlay, on six turned and fluted tapering legs with acanthus cast brass capitals and feet.

72 x 20 x 36 in | 182.88 x 50.8 x 91.44 cm



SC51001
Sophie Cocktail Table

Brass Floral & Line Inlaid Figured Etimoe Veneer
Primavera Veneer Banding
Walcot Finish / Old English Brass Accents

56 x 36 x 20 in | 142.2 x 91.4 x 50.8 cm



SC53001
Large Tomlin Console Table

Serpentine Top with Two Frieze Drawers
Brass Floral & Line Inlaid Figured Etimoe Veneer
Primavera Veneer Banding / Walcot Finish / Old English Brass Accents

54 x 14½ x 34 in | 137.1 x 36.9 x 86.4 cm



SC50033
The Verily End Table

A flame Cerejeira veneered and parquetry crossbanded side table, the circular caddy molded top centered by an amboyna burl veneered oval, the finely cast brass capital reeded mahogany legs terminating in splayed feet with reeded brass cappings and joined by a parquetry banded undertier.

23 x 23 x 26½ in | 58.5 x 58.5 x 67.3 cm



SC50016
Benoite Side Table

A finely flame mahogany, Morado banded and sycamore veneered lamp table with fine double stringing, the serpentine top above a fluted veneered frieze with fan inlaid details on square tapering legs with fluted inlay.

24 x 18 x 26 in | 61 x 45.72 x 66 cm



SC53014.C188
Melina Cosole Table

A fine flame mahogany and Morado banded console table with fan marquetry, brass line and mother of pearl inlays, the bowfront Old English brass bound top with lobed corners, above a Old English finish cast brass acanthus scroll applied frieze with one drawer, on acanthus cast brass capped cabriole legs with scroll cast feet and joined by a brass bound and veneered undertier.

54 x 17½ x 34 in | 137 x 44.5 x 86.34 cm



SC50035

Harper End Table

The Harper End Table is designed with classic Etimoie Crotch, Karelian burl, and makore veneers with an intricate marquetry design on top. With a frieze-inspired stylish drawer and bold brass handle pulls, this end table will bring class and grace to any room. Seen here in our Patrician finish on cabriole hand-crafted legs with brass ornamental detailing.

26 x 26 x 26 in | 66 x 66 x 66 cm



SC53021

Harper Half Console Table

The perfect piece for a tight space, this small-scale Etimoie Crotch veneered console table displays a polished Karelian Burl frieze inspired drawer with a detailed brass inlay. Featured on our elegant cabriole legs with brass ornaments. Seen here in the Patrician finish.

32 x 13½ x 34 in | 81.3 x 34.3 x 86.4 cm



SC51018

Harper Cocktail Table

The Harper Cocktail Table consists of an elegant Etimoie Crotch, Karelian Burl and makore veneers with beautiful inlaid marquetry woodworking details on top. The frieze patterned drawer and elegant brass pulls provide extra storage. Detailed with sparkling brass inlays, cabriole legs with brass ornaments and pictured here in our Patrician finish.

56 x 33 x 20 in | 142.2 x 83.8 x 50.8 cm

SC53020

Harper Console Table

Seen here in our elegant Patrician finish, the larger scale Harper Console Table combines classic elements of Etimoie Crotch, Karelian Burl, and makore veneers with beautiful brass inlays. A detailed wooden drawer with brass pulls are supported on solid cabriole legs lined with brass.

52 x 15 x 34 in | 132.1 x 38.1 x 86.4 cm





SC42006.1AWK
Austen Executive Chair

A fine mahogany and flame mahogany veneered executive chair, the scroll over veneered and Morado banded top rail with fine stringing details and brass rosettes, above a padded back, arms and seat, the scroll uprights and paneled seat rail with brass rosette accents, on an adjustable base with a reeded detailed five point base with bronze finish caps and vinyl castors.

29¼ x 30¼ x 41½ in | 74.4 x 77.1 x 105.4 cm

Upholstered in Swathe-UP5100 Fabric
 Trim: Welting



SC71002
Morley Desk

Two Frieze Drawers
 Turned & Fluted Legs with Acanthus Cast Brass Capitals and Feet
 Solid Mahogany & Figured Etimoe Veneer
 Primavera Veneer Crossbanding
 Floral & Brass Line Inlaid
 Walcot Finish with Old English Brass Accents
 46 x 24 x 30 in | 116.8 x 61 x 76.2 cm



SC71004
Aveneil Desk

A fine flame mahogany veneered and crossbanded pedestal desk with fine double stringing details, the gilt tooled leather inset concave sided top with protruding rounded corners supported by reeded columns with acanthus cast brass capitals, above a central lockable frieze drawer flanked by two further drawer, above pedestals with three graduated drawers each, on a flame mahogany veneered plinth base. The reverse with a modesty panel.

72 x 38 x 30½ in | 182.88 x 96.52 x 77.5 cm



SC40006.1BFH
The Apex Dining Side Chair

A finely hand carved mahogany Gothic revival side chair, the serpentine back enclosing interlacing Gothic arches, above an upholstered seat with nail head trim and serpentine seat rails trailing to carved cabriole legs.

21 x 25¼ x 42 in | 53.34 x 65.48 x 106.68 cm

Upholstered in Draper Performance-UP5409 Fabric

Trim: French Natural Nail



SC41006.1BFH
The Apex Dining Armchair

A finely hand carved and roundel decorated mahogany Gothic revival armchair, the serpentine back enclosing interlacing Gothic arches, the scroll arms enclosing an upholstered seat with nail head trim and serpentine seat rails trailing to carved cabriole legs.

24½ x 25¼ x 42 in | 62.23 x 65.48 x 106.68 cm

Upholstered in Draper Performance-UP5409 Fabric

Trim: French Natural Nail



SC54001
Trenton Dining Table

Brass Inlaid Mahogany & Figured Etimoe
Primavera Veneer Crossbanding with Brass Floral & Line Inlay
Walcot Finish
Bold Old English Acanthus Cast Brass Accents

53¼ x 53¼ x 30 in | 135 x 135 x 76.2 cm



SC61018
Avenall Sideboard

A flame mahogany and Morado banded sideboard with fine double stringing in sycamore and ebony, the serpentine crossbanded top above four frieze drawers, above four paneled cabinet and lockable cabinet doors flanked by fluted inlaid rounded columns, on a shaped plinth base.

89½ x 22 x 36 in | 227.4 x 55.9 x 91.45 cm



SC61034
Harper Cabinet

Seen here in our Patrician finish, this classic cabinet comes crafted from Khaya, Etimoe Crotch, Karelian burl, and makore veneers. The Harper Cabinet is detailed with a timeless brass inlay surrounding the top and two architecturally embellished drawers atop of exquisite marquetry doors. Shaped with an antique serpentine base and placed upon a cabriole leg.

50 x 18 x 38 in | 127 x 45.7 x 96.5 cm

SC50008
Neville Nightstand

An Oxford finish swirl walnut and mahogany banded Nightstand with Primavera and ebonized stringing details, the serpentine molded edge top above two shaped drawers with fine brass handles, on finely acanthus carved cabriole legs.

27 x 20 x 26 in | 68.6 x 50.8 x 66.04 cm



The image features a dark, textured background adorned with intricate, handcrafted metal art. The primary focus is on several butterflies of various sizes and orientations. Their wings are detailed with swirling patterns and scalloped edges, finished in a rich, metallic gold. Some butterflies have deep red or burgundy accents on their wings. Interspersed among the butterflies are delicate floral and leaf motifs, also rendered in gold and red. The overall aesthetic is elegant and artistic, characteristic of fine metalwork.

TA ORIGINALS

Rich, one-of-a-kind forms handcrafted in the finest materials and finishes. The TA Originals Collection brings artistic visions to life.



5005-355
Around in Circles Side Table

A mahogany and brass bound lamp table, the circular top above a frieze drawer, on inswept splay legs with sabots, joined by a brass bound undertier.

20 x 20 x 28 in | 50.8 x 50.8 x 71.12 cm



5105-158
Around in Circles Cocktail Table

A mahogany oval cocktail table, with a brass bound flame veneered top and undertier, the top fitted with four leather inset slides, on sabre legs.

52¼ x 34¼ x 21¼ in | 132.72 x 87 x 53.66 cm



5002-236
Spectator's Gallery Accent Table

An imbuya burl and Chocolate Chinoiserie hand painted lamp table, the rectangular top with a fine brass gallery above ring turned legs joined by an undertier. The original Regency.

21 x 16 x 27¼ in | 53.34 x 40.64 x 69.52 cm



5002-178
The Jennings and Betteridge Accent Table

An ebonised, gilt and painted circular lamp table, with brass bound top and turned column, on tripod cabriole legs. The original Victorian after Jennings and Betteridge.

22 x 19¼ x 26¼ in | 55.88 x 48.9 x 66.99 cm



5105-160
Regal Cocktail Table

A flame veneered and solid mahogany lamp table, the serpentine brass bound top above two drawers on each side centred by a leather inset slide drawer with a concealed drawer, all with brass Rocaille handles, on square tapering, fluted legs joined by a serpentine brass bound undertier.

56 x 36 x 20¼ in | 142.24 x 91.44 x 51.12 cm



5005-392
In the Grand Manner Side Table

A flame veneered and solid mahogany lamp table, the serpentine square brass bound top above a shaped frieze drawer with finely cast brass Rocaille handle, on square tapering and fluted legs applied with roundels and joined by a serpentine brass bound undertier.

26¼ x 26¼ x 27 in | 66.68 x 66.68 x 68.58 cm

5105-138
The Galleried Cocktail Table

An flame veneered, burl veneer inlaid and mahogany cocktail table, the oval top with two opposing end drawers, verdigris brass handles and a gallery to the concave undertier, on turned and fluted legs.

42 x 32 x 20 in | 106.68 x 81.28 x 50.8 cm



5105-178
Capital Cocktail Table

A mahogany and morado banded cocktail table applied with very fine brass mounts, the brass bound circular top with protruding corners, the frieze with two opposing drawers, on ram's head capital cabriole legs joined by an undertier.

38¾ x 38¾ x 20¼ in | 98.74 x 98.74 x 51.12 cm



5005-442
Bernadette Side Table

A fine mahogany and morado crossbanded lamp table, applied with very fine brass mounts, the brass bound circular top and undertier with protruding corners and a frieze drawer, on cabriole legs.

26¼ x 26¼ x 29 in | 66.68 x 66.68 x 73.66 cm



5300-089
Ram's Head Console Table

A mahogany, flame veneered and morado banded console table applied with very fine brass mounts, the brass bound top with a frieze drawer, on ram's head capital cabriole legs with hoof feet joined by an undertier.

40¼ x 17¼ x 34¼ in | 102.24 x 43.82 x 86.68 cm

RE50020
Telescopic Accent Table

A mahogany circular adjustable telescopic lamp table, with brass swag cast gallery, brass action and turned column, on downswept legs.

16¼ x 15¼ x 34 in | 41.28 x 38.74 x 86.36 cm



RE17005
Classical Torchère

A carved and gilt torchère, the circular top with a carved edge and frieze, on three supports with acanthus bases and capitals, the whole supported on a trefoil concave base and raised on brass winged lions paw feet. The central 'X' form structure of stretchers in brass centred by a ring decorated with flowerhead paterae.

18½ x 16½ x 44 in | 46.99 x 41.91 x 111.76 cm

RE50025
Demi Lune Accent Console Table

A mahogany demi lune console of small proportions, fitted with two central frieze drawers applied with brass handles and locks, on square tapering legs terminating in brass feet joined by an undertier.

22 x 13¾ x 35 in | 55.88 x 34.92 x 88.9 cm





5005-551
Slender Elegance Side Table

A fine and delicate mahogany and gilt accent table, the brass bound mother of pearl inlaid and line strung flame veneered top above an undulating hand carved acanthus scroll apron, on slender cabriole legs with fine brass mounts and sabots, joined by moulded arched stretchers with a brass finial centre.

28¼ x 28¼ x 27½ in | 71.76 x 71.76 x 69.85 cm



5005-589
Formalities Side Table

A flame veneered and mahogany lamp table with fine brass mounts, the circular brass bound white veined black marble top above a frieze drawer on turned and fluted legs joined by a circular undertier.

26 x 26 x 28 in | 66.04 x 66.04 x 71.12 cm



5005-389
Director's Side Table

A mahogany and gilt lamp table, the square brass bound top with a frieze drawer, on turned fluted legs, concave front undertier and peg feet.

26¼ x 26¼ x 27¼ in | 66.68 x 66.68 x 68.9 cm



5005-601
Variations on the Bobbin Side Table

A Pacific walnut lamp table, the square top with rounded corners and a reeded edge above a similar undertier, on bobbin turned legs.

26 x 26 x 28½ in | 66.04 x 66.04 x 72.39 cm



5005-315
Appetizer Side Table

A burl veneer and solid acacia three tier lamp table, the dished oval tray top and two undertiers between baluster turned supports, on turned and tapering legs terminating in brass castors. The original Victorian.

26 x 18¼ x 27¼ in | 66.04 x 46.36 x 69.22 cm



5002-140
Arcadia Side Table

A bedside chest or lamp table with Classical landscape découpage decoration, the rectangular dished tray top above three cockbeaded long drawers applied with brass handles, on turned and fluted tapering legs joined by turned stretchers terminating in brass cappings. The original Regency.

26½ x 20 x 31 in | 67.31 x 50.8 x 78.74 cm



5002-106
Hammadan Side Table

A carpet découpage lamp table, with a frieze drawer on square chamfered legs. The original George III.

25 x 19 x 24 in | 63.5 x 48.3 x 61 cm



6300-076
In Butler's Pantry Side Table

A mahogany three tier console table or étagère, with dished tiers, turned supports on verdigris brass cappings. The original Regency.

31 x 11 x 31¼ in | 78.74 x 27.94 x 80.65 cm



5005-112
The Sometime Accent Table

A solid oak and flame veneered three tier lamp table, each elongated octagonal tier with a three quarter pierced brass gallery, on shaped end supports with lozenge ornaments, terminating in splayed feet.

20½ x 13¼ x 28 in | 51.8 x 33.7 x 71.1 cm



5005-662
The Welcome Accent Table

A flame veneered and mahogany lamp table, the oval top on gently splayed acanthus capital and reeded tapering legs joined by an undertier.

20 x 17 x 29¼ in | 50.8 x 43.18 x 74.3 cm



5005-022
Radiating Parquetry Accent Table

A mahogany and burl sunburst parquetry oval lamp table, with brass gallery and fluted column, on 'C' scroll legs. The original George III.

19¼ x 13¼ x 22 in | 48.9 x 33.7 x 55.6 cm



5000-569
Parfait Accent Table

A marble top mahogany lamp table, the white veined black marble D end top with a three quarter brass gallery on fluted supports joined by a concave sided undertier.

30 x 16¼ x 29 in | 76.2 x 41.28 x 73.66 cm



5000-121
De Temps en Temps Accent Table

A circular poplar burl lamp table, the burl veneer top with a patinated brass pierced gallery and similar undertier above a single bowed burl frieze drawer, square panelled supports on cabriole legs terminating in brass sabots. The original Louis XVI.

14 x 14 x 28½ in | 35.6 x 35.6 x 72.4 cm



5000-029
Walnut Circle Accent Table

An acacia circular lamp table, with brass gallery, brown leather top and undertier, frieze drawer, on square and cabriole legs. The original Louis XVI.

13¾ x 13¾ x 27½ in | 34.92 x 34.92 x 69.85 cm



5005-597
Fine Accent Table

A mahogany and flame veneered lamp table with fine brass mounts, the brass galleried oval top above a frieze drawer on panelled square tapering legs with brass cappings joined by an 'X' stretcher.

19½ x 13½ x 31¼ in | 49.53 x 34.59 x 79.38 cm



5000-570
18th Century Style Accent Table

A mahogany lamp table with fine brass mounts, the serpentine antiqued glass and brass bound top above an end drawer, on cabriole legs with sabots.

13 x 16¼ x 26 in | 33.02 x 41.28 x 66.04 cm

5005-048
Parquetry Nest of Table

A mahogany and burl lattice parquetry nest of two tables, with turned end supports and on splay feet. The original Regency.

19¼ x 14¾ x 26 in | 48.9 x 37.47 x 66.04 cm



5000-014
Marriage of Convenience Nests of Table

A mahogany nest of three graduated tables, the rectangular moulded edge tops on turned and fluted double end column supports with splay legs joined by stretchers. The originals Regency.

16½ x 13 x 26 in | 41.9 x 33 x 66.04 cm



5000-159BD
Four in Hand Nests of Table

A mahogany nest of four tables, with brown leather inset tops, on turned supports and splay feet. The originals Regency.

21 x 15 x 29 in | 53.3 x 38.1 x 73.7 cm

5005-223
Swirling Teardrops Centre Table

A marquetry hand inlaid centre table, the circular top with swirling hand inlay in morado and burl veneers with sunburst parquetry crossbanding, above two bowed frieze drawers, on inswept supports with scroll feet applied with brass rosettes, the concave sided inlaid undertier on brass paw feet. The original Regency.

36 x 36 x 30 in | 91.4 x 91.4 x 76.2 cm



5005-417
The Scrolling Vine Centre Table

A flame veneered and mahogany, brass inlaid drum top centre table, the circular top inlaid with a band of scrolling leaves, the frieze fitted with a centre drawer, on a turned and tapering column with lapette carved base, on a concave sided brass strung plinth with rosette corners, on lobed bun feet.

38 x 38 x 30 in | 96.52 x 96.52 x 76.2 cm



5005-243
Centre of Attention Table

A flame veneered and movingue crossbanded circular centre table, the circular moulded edge with two frieze drawers, on turned fluted legs with brass feet joined by a quatrefoil floral stretcher centred by a turned mahogany vase.

36 x 36 x 30 in | 91.44 x 91.44 x 76.2 cm



5325-001
Gilt Grotto Accent Console Table

A highly unusual Grotto table, the rounded 'D' shaped flame veneered and morado crossbanded top above a gilt metal cast base of a giant clam shell supported by coral legs issuing from a starfish. Inspired by Renaissance shell decorated Grottos.

27¼ x 17¼ x 33 in | 69.2 x 43.8 x 83.8 cm



5325-003
Atoll Console Table

Flame Veneered Rectangular Top
Georgian Finish
Branching Coral Cast Metal Supports
Shell Cast Metal Base

48 x 17 x 32 in | 121.92 x 43.18 x 81.28 cm

5300-083
Beauty of Leaves Accent Console Table

A mahogany and gilt carved bowfront console table, the leaf decorated frieze and drawer above leaf carved turned legs joined by a concave undertier.

30 x 15 x 34 in | 76.2 x 38.1 x 86.36 cm



5000-465BD
Louis XVI library Side Table

A faux book panel circular lamp table, verdigris brass mounts, aged brown leather top and undertier, drawer and cabinet, turned fluted legs. The original Louis XVI.

24 x 24 x 28 in | 60.96 x 60.96 x 71.12 cm

5105-438
Storyteller Cocktail Table

Brass Bound Breakfront Oval Top
Flame Veneered, Crossbanded and Sycamore Strung Top
Beveled Glass Inset
'Marlborough' Finish
Frieze above Six Brass Capital & Fluted Legs
Joined by a Concave Sided Undertier Turned Legs with Brass Cappings

48¼ x 28¼ x 19¼ in | 122.55 x 71.75 x 48.9 cm





5305-003
Burl Lattice Parquetry, Brass Mounted Console Table

A burl lattice parquetry, brass mounted console table, four frieze drawers, on turned and fluted legs joined by an undertier. The original Louis XVI.

58¼ x 10¾ x 32¾ in | 147.96 x 26.99 x 83.19 cm



5300-018BD
The Louis XVI Leather Console Table

A leather panelled and solid wood console table, decorated throughout with verdigris brass mounts, the galleried top above four frieze drawers on turned and fluted legs joined by a brass galleried undertier. The original Louis XVI.

58¼ x 10¾ x 32¾ in | 147.96 x 26.99 x 83.19 cm





7100-135BL
Tales from France Writing Table

A flame veneered and brass mounted bureau plat desk, with a leather inset writing surface and three frieze drawers, on turned legs.
42¾ x 26¼ x 30 in | 108.59 x 66.68 x 76.2 cm



7105-133AN
Missives to a Friend Writing Table

A flame veneered and mahogany writing desk, the rectangular leather inset top above five drawers surrounding the kneehole, on turned and brass leaf mounted tapering legs.
60 x 30 x 30 in | 152.4 x 76.2 x 76.2 cm



7100-002BD
The Kaye Campaign Desk

A Campaign desk, the flip top revealing a fitted interior, leather writing surface, on splayed legs. The original Victorian.

Open: 29¼ x 27 x 34 in | 74.3 x 68.58 x 86.36 cm
Closed: 29¼ x 17¾ x 31 in | 74.3 x 45.09 x 78.74 cm



7100-011BD
The Residency Campaign Desk

A bowfront Campaign desk, the flip top enclosing a fitted interior and a leather writing surface, with five drawers surrounding the kneehole, on tapering splay legs joined by stretchers. The original Victorian.

42 x 22 x 33½ in | 106.68 x 55.88 x 85.09 cm

4200-046.1ABM
Louis Bergère

A hand carved and caned bergère armchair, with laurel carved, serpentine seat, gold silk cushion and on turned tapering fluted legs. The original Louis XVI provincial.

25 x 25½ x 39 in | 63.5 x 64.77 x 99.06 cm

Upholstered in Embroidered Silk-02 Fabric
 Trim: Welting



4100-522DC
Northcote Accent Chair

A hand carved library armchair, with an upholstered panel back and seat, with brass nail head trim, scroll arms, on turned fluted tapering legs. The original Regency circa 1825.

24 x 26¾ x 38 in | 60.96 x 68.26 x 96.52 cm

Upholstered in Old English-DC Leather / Trim: TA Vintage Nail



4102-138.1BOA
Sophy's Chair

An ebonised and parcel gilt occasional chair, the reeded, turned and bar top rail above a pierced trellis back, the upholstered drop in seat between downswept channelled arms, on splayed ring turned legs. Inspired by a Regency original.

25 x 24¾ x 36¾ in | 63.5 x 62.9 x 93.34 cm

Upholstered in Alpaca-UP5329A Fabric / Trim: Welting

4400-180DC
The Director's Stool

A sable mahogany and brass mounted stool in the manner of Thomas Hope, with slung seat, with lion head arm terminals, on a turned 'X' base. The original Regency.

25½ x 21½ x 25 in | 64.77 x 54.61 x 63.5 cm

Upholstered in Old English-DC Leather
 Trim: TA Vintage Nail



4200-037BB
Evening at Ease Bar Stool

A hand carved scoop back swivel bar stool / chair, the padded scoop back and upholstered seat, with scroll arms and legs with a verdigris brass foot rest. The original Louis XV.

22 x 26 x 44¼ in | 55.9 x 66 x 112.4 cm

Upholstered in Antique Buffalo Brown-BB Leather
 Trim: TA Vintage Nail



6300-009
Display Etagere From The Regency

A six tier étagère, the shelves between 'X' supports, with two drawers to the lowest tier. The original Regency.

22 x 10 x 73½ in | 55.9 x 25.4 x 186.7 cm



6105-261
Corner Cabinet of Georgian England

A mahogany and flame veneered corner cabinet, the upper section with an astragal glazed door enclosing lights and three glass adjustable shelves, above a frieze drawer and cabinet door below. Enclosing an adjustable shelf.

24¼ x 14¼ x 82¾ in | 61.6 x 36.51 x 209.87 cm



6305-017
The Agra Bookcase

A Campaign office bookcase, with four pigeonholes, eight shelf sections and one drawer with brass fittings. The original Victorian.

24 x 12 x 82 in | 61 x 30.5 x 208.3 cm



4000-849.1BFF
Penreath Chair

A hand carved mahogany dining chair in the manner of Thomas Chippendale, the serpentine top rail above a pierced vase splat, the upholstered drop in seat on square chamfered legs joined by stretchers. Inspired by a George III original.

22¾ x 23¼ x 38¾ in | 57.5 x 59 x 98.5 cm

Upholstered in Draper Performance-UP5409 Fabric / Trim: None



4100-849.1BFF
Penreath Armchair

A hand carved mahogany dining armchair in the manner of Thomas Chippendale, the serpentine top rail above a pierced vase splat, the upholstered drop in seat enclosed by scroll terminal arms, on square chamfered legs joined by stretchers. Inspired by a George III original.

25 x 23¼ x 38¾ in | 63.5 x 59 x 98.5 cm

Upholstered in Draper Performance-UP5409 Fabric / Trim: None



4000-902.1BFD
The Regency Visitor's Dining Chair

A hand carved side chair with reeded decoration, the over scroll and double 'X' pierced back above an upholstered seat, on sabre legs.

20 x 22 x 33¾ in | 50.8 x 55.9 x 85.7 cm

Upholstered in Draper Performance-UP5409 Fabric / Trim: Welting



4100-902.1BFD
The Regency Visitor's Armchair

A hand carved armchair with reeded decoration, the over scroll and double 'X' pierced back above an upholstered seat, on sabre legs.

24 x 23½ x 34 in | 61 x 60 x 86.5 cm

Upholstered in Draper Performance-UP5409 Fabric / Trim: Welting



5405-072
Brook Street Supper Dining Table

A mahogany and flame veneered circular extending dining table, the top with a moulded edge and pull out lopers supporting four crescent shaped crossbanded extension leaves, on four turned supports with concave sided platform base issuing downswept legs terminating in brass castors.

Open: 88½ x 88½ x 30 in | 224.79 x 224.79 x 76.2 cm

Closed: 66 x 66 x 30 in | 167.64 x 167.64 x 76.2 cm



5405-274
Penreath Dining Table

A swirl mahogany veneered dining table, the rectangular reeded edge and satinwood banded top extending to accommodate one additional leaf, on two gun-barrel turned column pedestals with downswept legs terminating in brass cappings and castors. Inspired by a Regency original.

Open: 110 x 42 x 30 in | 279.5 x 106.7 x 76.2 cm

Closed: 88 x 42 x 30 in | 223.5 x 106.7 x 76.2 cm



4000-651.1BFG
Cultivated Dining Chair

A hand carved side chair, the rectangular padded back and upholstered seat on turned tapering legs joined by a wavy 'X' stretcher. The original William and Mary.

23 x 25 x 41 in | 58.42 x 63.5 x 104.14 cm

Upholstered in Draper Performance-UP5409 Fabric
Trim: TA Vintage Nail



4100-651.1BFG
Cultivated Dining Armchair

A hand carved armchair, the rectangular padded back and upholstered seat on turned tapering legs joined by a wavy 'X' stretcher. The original William and Mary.

24½ x 26½ x 42 in | 62.23 x 67.31 x 106.68 cm

Upholstered in Draper Performance-UP5409 Fabric
Trim: TA Vintage Nail



4000-613.1BFF
A Delicate Trellis Side Chair

A Chinoiserie 'Cockpen' side chair, the trellis back above an upholstered drop-in seat, on splayed tapering legs. The original George III, circa 1765.

22½ x 23 x 39¼ in | 57.15 x 58.42 x 100.01 cm

Upholstered in Draper Performance-UP5409 Fabric / Trim: None



4100-613.1BFF
A Delicate Trellis Armchair

A Chinoiserie 'Cockpen' armchair, the trellis back above an upholstered drop-in seat, on splayed tapering legs. The original George III, circa 1765.

24½ x 23½ x 39½ in | 62.23 x 59.69 x 100.33 cm

Upholstered in Draper Performance-UP5409 Fabric / Trim: None





4000-914.1BFF
Eternal Flame Side Chair

A mahogany side chair, the flame veneered bar top rail and solid splat above an upholstered seat, on square tapering legs.

20 x 25 x 37 in | 51.1 x 63.5 x 94 cm

Upholstered in Draper Performance-UP5409 Fabric / Trim: None



4100-914.1BFF
Eternal Flame Armchair

A mahogany armchair, the flame veneered bar top rail and solid splat above an upholstered seat, on square tapering legs.

23 x 24¾ x 37 in | 58.4 x 62.9 x 94 cm

Upholstered in Draper Performance-UP5409 Fabric / Trim: None



4000-905.1AQP
Lady Emily's Invitation Side Chair

A mahogany lattice back side chair, the rectangular back enclosing a lattice of interlacing C's above an upholstered drop-in seat, on square tapering legs. Inspired by an Empire original.

21 x 24¼ x 40 in | 53.3 x 61.6 x 101.6 cm

Upholstered in Barley Houndstooth-UP4519 Fabric / Trim: Welting



4100-905.1AQP
Lady Emily's Invitation Armchair

A mahogany lattice back armchair, the rectangular back enclosing a lattice of interlacing C's above an upholstered drop-in seat, on square tapering legs. Inspired by an Empire original.

23½ x 25¾ x 39¾ in | 59.7 x 65.4 x 101 cm

Upholstered in Barley Houndstooth-UP4519 Fabric / Trim: Welting



4000-281.1AQP
Lady Emily's Favourite Side Chair

A hand carved side chair, the verdigris brass oval inset and caned back above a silk tie on cushion seat, on spiral turned legs. The original Regency.

22 x 22¾ x 36¼ in | 55.88 x 57.79 x 91.76 cm

Upholstered in Barley Houndstooth-UP4519 Fabric / Trim: Welting



4100-237.1AQP
Lady Emily's Favourite Armchair

A hand carved armchair, the verdigris brass oval inset and caned back above a silk tie on cushion seat, on spiral turned legs. The original Regency.

24 x 22¾ x 36 in | 60.96 x 57.79 x 91.44 cm

Upholstered in Barley Houndstooth-UP4519 Fabric / Trim: Welting



4000-517.1AVJ
The Hidden Vase Side chair

A side chair in the manner of George Hepplewhite, the shield back and vase carved splat above an upholstered seat, on turned fluted tapering legs.

19½ x 21½ x 37¼ in | 49.53 x 54.61 x 94.62 cm

Upholstered in Lillian Cream-UP5044 Fabric / Trim: Welting



4100-448.1AVJ
The Hidden Vase Armchair

An armchair in the manner of George Hepplewhite, the shield back and vase carved splat above an upholstered seat, on turned fluted tapering legs.

22 x 23½ x 37½ in | 55.88 x 59.69 x 95.25 cm

Upholstered in Lillian Cream-UP5044 Fabric / Trim: Welting



4000-910.1BFH
Warmth By The Fireside Dining Chair

A hand carved mahogany side chair, the arched padded back and upholstered seat above scrolling hand carved legs joined by serpentine stretchers. Inspired by a Louis XIV original.

23¼ x 25½ x 44¼ in | 59.1 x 64.8 x 112.4 cm

Upholstered in Draper Performance-UP5409 Fabric
Trim: French Natural Nail



4100-910.1BFH
Warmth By The Fireside Dining Chair

A hand carved mahogany armchair, the arched padded back and upholstered seat above scrolling hand carved legs joined by serpentine stretchers. Inspired by a Louis XIV original.

24¼ x 26 x 44½ in | 61.6 x 66 x 113 cm

Upholstered in Draper Performance-UP5409 Fabric
Trim: French Natural Nail



4000-566.1BFF
The Trellis Dining Chair

A serpentine side chair, with an interlacing trellis back, above a bowed upholstered seat, on chamfered legs. The original George III circa 1780.

21¼ x 23 x 38 in | 53.98 x 58.42 x 96.52 cm

Upholstered in Draper Performance-UP5409 Fabric / Trim: None



4100-486.1BFF
The Trellis Dining Armchair

A serpentine armchair, with an interlacing trellis back, above a bowed upholstered seat, on chamfered legs. The original George III circa 1780.

25 x 24 x 39 in | 63.5 x 60.96 x 99.06 cm

Upholstered in Draper Performance-UP5409 Fabric / Trim: None

4100-485.1AQP
Sheraton's Dainty Chair

A carved and gilt armchair, the rectangular 'X' back with a mahogany panel, the caned seat with a silk tie-on cushion, on turned and fluted legs. The original Regency after Thomas Sheraton, circa 1800.

22½ x 23½ x 36 in | 57.15 x 59.69 x 91.44 cm

Upholstered in Barley Houndstooth-UP4519 Fabric
Trim: Welting



6105-335

In the Empire Style Sideboard

A bowfront flame veneered and oval pollard oak burl panel inlaid side cabinet or buffet, the brass bound top above three frieze drawers above four cabinet doors enclosing three adjustable shelves, flanked by brass mounted columns, on a plinth base.

60¼ x 15½ x 34¼ in | 153.04 x 39.37 x 87 cm



6105-241

The Almack's Sideboard

A flame veneered and morado banded sideboard, with five drawers and two cabinet doors, on turned fluted legs joined by an undertier.

42 x 13¾ x 34 in | 106.68 x 34.92 x 86.36 cm



6105-604

Mandel Sideboard

Feathered Paldao Veneered with le Brun Finish

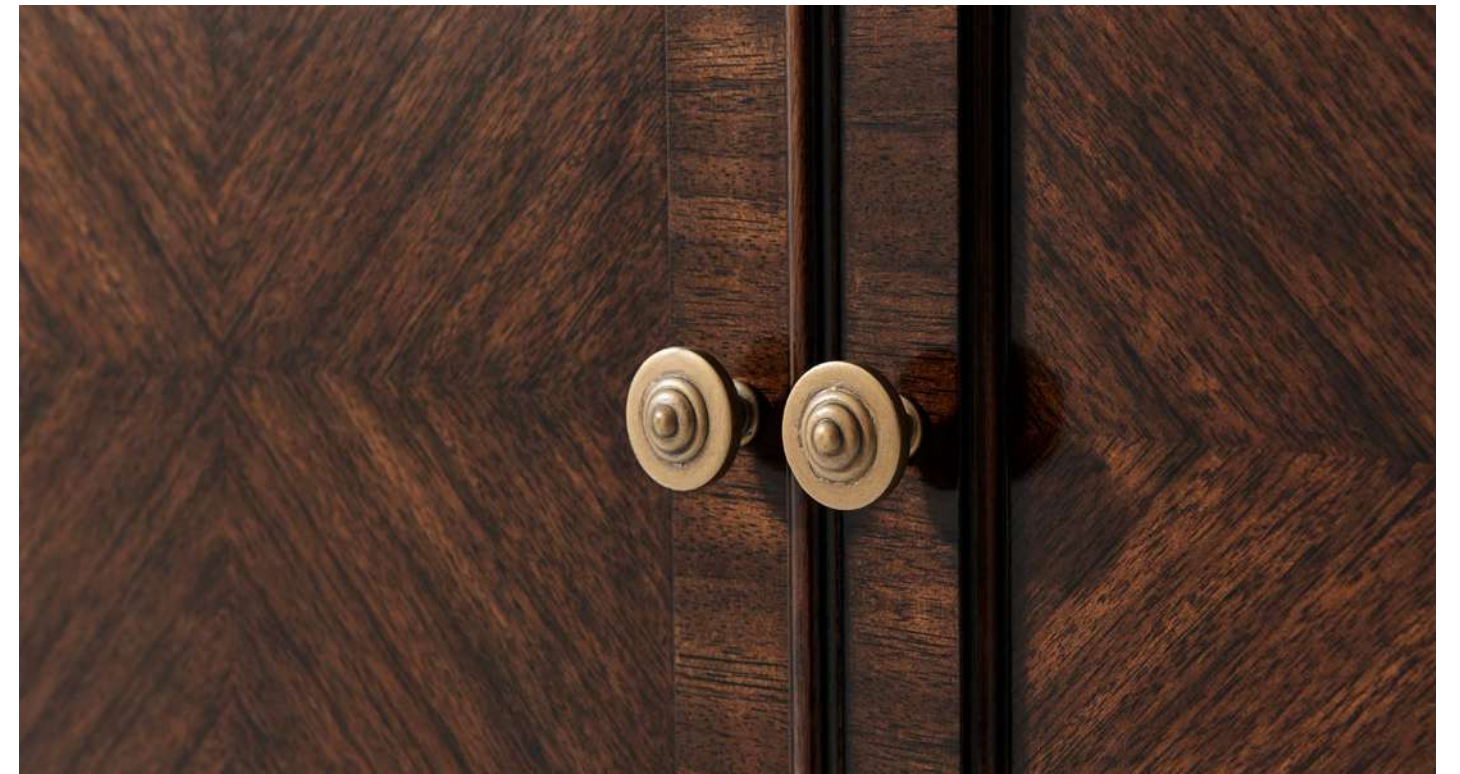
Breakfront Top with Reeded Edge

Four Recessed Panel Doors enclosing Shelves and Two Drawers

Reeded Base Molding

Turned and Tapering Legs

70 x 19 x 35¾ in | 177.8 x 48.26 x 90.8 cm





8305-065
The Middleton Rice US King Bed

A finely carved mahogany and figured mahogany rice US King bed, the serpentine arched and moulded edge headboard flanked by acanthus leaf and rice carved baluster turned posts with urn finials; the figured mahogany rails with brass rosettes to the posts. Inspired by an 18th century American original.

85 x 87 x 90 in | 215.90 x 220.90 x 228.60 cm



6005-494
The Middleton Nightstand

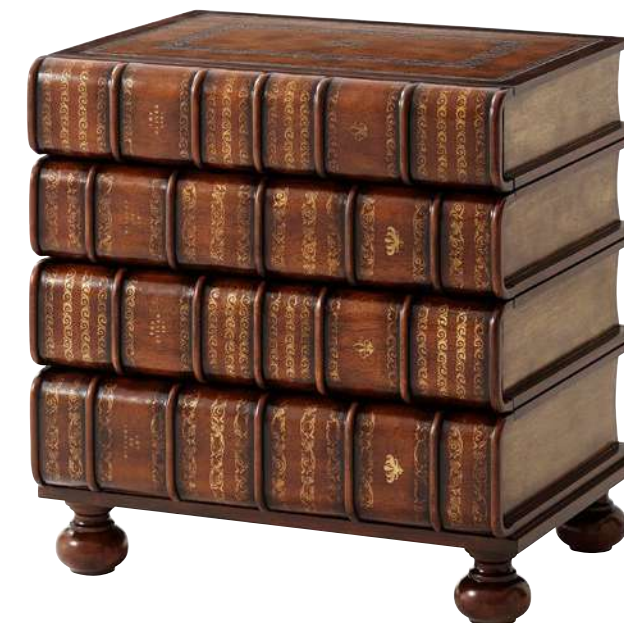
A mahogany and flame veneered nightstand, the reeded edge bowfront top with protruding corners with leaf carved and reeded uprights, with three graduated drawers with verdigris brass handles, raised on turned legs.

30 x 20 x 30 in | 76.2 x 50.8 x 76.2 cm

8205-065
The Middleton Rice US Queen Bed

A finely carved mahogany and figured mahogany rice US Queen bed, the serpentine arched and moulded edge headboard flanked by acanthus leaf and rice carved baluster turned posts with urn finials; the figured mahogany rails with brass rosettes to the posts. Inspired by an 18th century American original.

69 x 87 x 90 in | 175.30 x 220.90 x 228.60 cm



6000-017BD
Hand Carved and Gilt Faux Book Nightstand

A hand carved and gilt faux book chest of drawers, four spine front drawers, on bun feet. The original Victorian.

25 x 19 x 26 in | 63.5 x 48.3 x 66 cm



6000-048BN
In a Regency Townhouse Nightstand

A mahogany and flame veneered bedside chest, the bowfront top above a leather inlaid brushing slide with four graduated drawers below, on splayed feet.

22 x 16 x 30 in | 55.9 x 40.6 x 76.2 cm



6005-044BN
Bachelor's Nightstand

A poplar burl bedside chest, the rectangular moulded edge top with a leather inset slide and four graduated drawers, on bracket feet. The original George III.

21 x 15½ x 28 in | 53.34 x 39.4 x 71.12 cm



6033-046PD
The Humorous Chest

A leather panel chest on stand, with nine monkey head handled drawers, on four brass monkey supports and a leather plinth base. The original 19th century Italian.

42¼ x 16½ x 41½ in | 107.32 x 41.91 x 105.41 cm



6005-506
Middleton Tallboy Chest

A mahogany and figured mahogany Gentleman's chest of drawers, the bowfront reeded edge top with protruding corners above leaf carved capital and reeded column supports, with an arrangement of eight short drawers and three long graduated drawers below, on turned feet. Inspired by a Federal Period original.

48¼ x 20 x 62 in | 122.5 x 50.8 x 157.5 cm



6005-495
The Middleton Dresser

A mahogany and flame veneered dresser, the reeded edge top with protruding corners and a central bowfront with leaf carved and reeded uprights with three frieze drawers and nine further graduated and crossbanded drawers with verdigris brass handles, raised on turned legs.

72 x 21 x 36 in | 183 x 53.3 x 91.5 cm



6105-329
King's Aviary Decorative Chest

A finely inlaid side cabinet or meuble d'appui with fine brass mounts, the white veined black marble breakfront top above three key pattern drawers, with parquetry doors below centred by a mother of pearl marquetry inlay of birds and each enclosing an adjustable shelf, on cabriole legs.

58¼ x 24 x 35½ in | 147.96 x 60.96 x 90.17 cm

RE44006DC
The Hall Bench

A carved mahogany and parcel gilt hall bench, the reeded solid seat with lapette carved and scroll end supports, loose button upholstered seat cushion, on turned fluted and tapering legs. The original Regency circa 1820 in the manner of George Bullock. Sold at auction in London for \$7,000.

42 x 16 x 24 in | 106.68 x 40.64 x 61 cm

Upholstered in Old English-DC Leather
 Trim: Welting



RE61003
Concave Side Cabinet Sideboard

A fine mahogany, flame veneered and burl banded side cabinet, with three frieze drawers above corresponding oval panel and lozenge inlaid doors enclosing adjustable shelves, with concave sides, on turned legs with brass cappings.

64 x 16 x 36¼ in | 162.56 x 40.64 x 92.08 cm

1705-007
The Burl Pedestal Column / Torchere

A Classical poplar burl panel tapered pedestal, with a square top and a stepped plinth base. The original Louis XVI.

14 x 14 x 42 in | 35.6 x 35.6 x 106.7 cm



1100-842BD
The Victorian Library Tray

A brown tooled leather covered tray of rectangular shape with gallery and brass handles of clasping hands. The original Victorian.

31½ x 20½ x 5 in | 80 x 52.1 x 12.7 cm

2021-712

Malmaison Table Lamp

A pollard burl and finely cast brass table lamp, the twin light arms above a shaped base with brass mounts surmounted by hand sewn silk shade. The original Louis XVI.

22 x 15 x 30¼ in | 55.88 x 38.1 x 76.84 cm



2021-876

Soaring Table Lamp

A finely cast brass and mahogany table lamp, the body of a cast polished brass branch with two verdigris brass flying ducks, mounted on a mahogany base and surmounted by a hand sewn shade and a branch cast finial.

23½ x 17 x 31 in | 59.7 x 43.2 x 78.5 cm

2021-633

Meiji Cranes Table Lamp

A pair of verdigris brass table lamps, each with a crane standing on a turtle, on burl plinth bases, with pleated silk shades. The originals Japanese Meiji period.

10 x 10 x 33 in | 25.4 x 25.4 x 83.82 cm



1023-102

The Myth Sculpture

A set of two large variously patinated brass cranes, standing on walking turtles. Inspired by 19th century Japanese Meiji period originals.

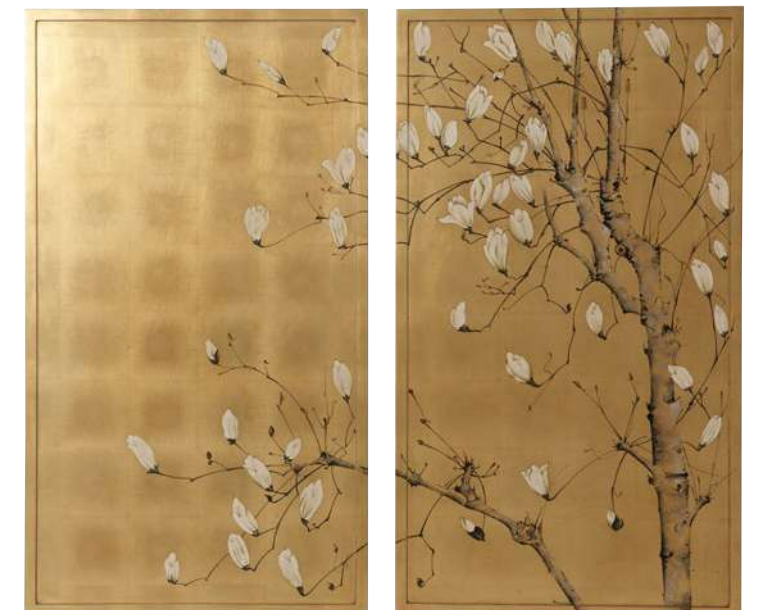
13 x 19 x 58 in | 33 x 48.3 x 147.3 cm

3202-361

Spring Magnolias Wall Décor

A set of two paintings, each with a hand gilt background depicting a Japanese Magnolia painted sans traverse across the two panels. The originals Japanese, circa 1900.

56¼ x 0¾ x 49½ in | 142.88 x 2.21 x 126.03 cm



THEODORE ALEXANDER



FOLLOW US



theodorealexander.com